



GLOBAL
HOUSE
ESTATES

**£485,000.00 Asking Price Of
Canterbury Crescent, Brixton, London SW9 7QA**



PROPERTY OVERVIEW

3 Bedrooms 1 Bathroom 1 Reception

This charming three-bedroom split level apartment located within the well maintained block of Burgate Court offers a wonderful blend of classic charm and practical living. With its spacious layout, this home is perfect for end users or someone who is looking for a safe investment in a central location.

The ground floor boasts an airy living and dining area with access to the quiet, rear private garden, while the separate integrated kitchen offers a functional space with ample storage and plenty of room for culinary creativity.

Upstairs, you will find three generously sized double bedrooms, with one of them being ideal for a home office, nursery or guest room, followed by a separate WC and a large three-piece bathroom.

This bright apartment also benefits from double glazed windows th ...

35a St Georges Road,
London SE1 6EW

+44 (0) 207 401 2020

www.globalhouseestates.com

4th Floor, Lee Garden 3,
Causeway Bay, Hong Kong

+852 3963 8411

SALES | LETTINGS | PROPERTY MANAGEMENT | PROPERTY INVESTMENTS



GLOBAL
HOUSE
ESTATES



35a St Georges Road,
London SE1 6EW

+44 (0) 207 401 2020

www.globalhouseestates.com

4th Floor, Lee Garden 3,
Causeway Bay, Hong Kong

+852 3963 8411

SALES | LETTINGS | PROPERTY MANAGEMENT | PROPERTY INVESTMENTS



GLOBAL
HOUSE
ESTATES



35a St Georges Road,
London SE1 6EW

+44 (0) 207 401 2020

www.globalhouseestates.com

4th Floor, Lee Garden 3,
Causeway Bay, Hong Kong

+852 3963 8411

SALES | LETTINGS | PROPERTY MANAGEMENT | PROPERTY INVESTMENTS



GLOBAL
HOUSE
ESTATES



35a St Georges Road,
London SE1 6EW

+44 (0) 207 401 2020

www.globalhouseestates.com

4th Floor, Lee Garden 3,
Causeway Bay, Hong Kong

+852 3963 8411

SALES | LETTINGS | PROPERTY MANAGEMENT | PROPERTY INVESTMENTS

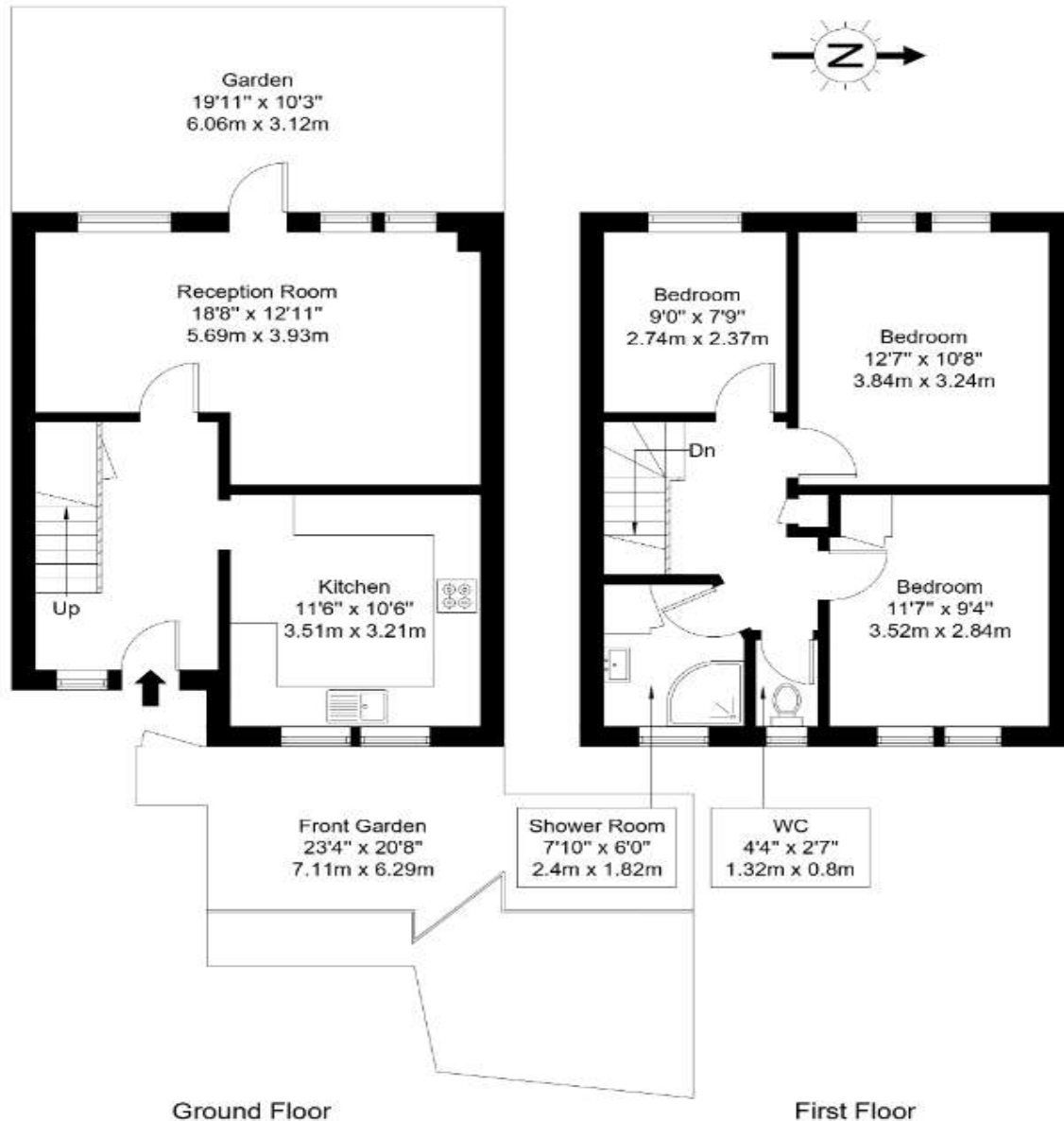
Canterbury Crescent, SW9 7QA

Approx Gross Internal Area = 84.4 sq m / 908 sq ft

Garden = 18.9 sq m / 203 sq ft

Front Garden = 37.2 sq m / 400 sq ft

Total = 140.5 sq m / 1511 sq ft



Ref :

Copyright **BLEU
PLAN**

The Floor plan is not to scale and measurements and areas shown are approximate and therefore should be used for illustrative purposes only. The plan has been prepared in accordance with the RICS code of Measuring Practice and whilst we have confidence in the information produced it must not be relied on. Maximum lengths and widths are represented on the floor plan. If there is any aspect of particular importance, you should carry out or commission your own inspection of the property.

Copyright @ BLEUPLAN

35a St Georges Road,
London SE1 6EW

+44 (0) 207 401 2020

www.globalhouseestates.com

4th Floor, Lee Garden 3,
Causeway Bay, Hong Kong


+852 3963 8411

SALES | LETTINGS | PROPERTY MANAGEMENT | PROPERTY INVESTMENTS



GLOBAL
HOUSE
ESTATES

Energy Efficiency Rating

	Current	Potential
<i>Very energy efficient - lower running costs</i>		
(92-100) A		
(81-91) B		
(69-80) C	◀ 73	◀ 75
(55-68) D		
(39-54) E		
(21-38) F		
(1-20) G		
<i>Not energy efficient - higher running costs</i>		
England, Scotland & Wales	EU	

Directive

2002/91/EC

35a St Georges Road,
London SE1 6EW

+44 (0) 207 401 2020

www.globalhouseestates.com

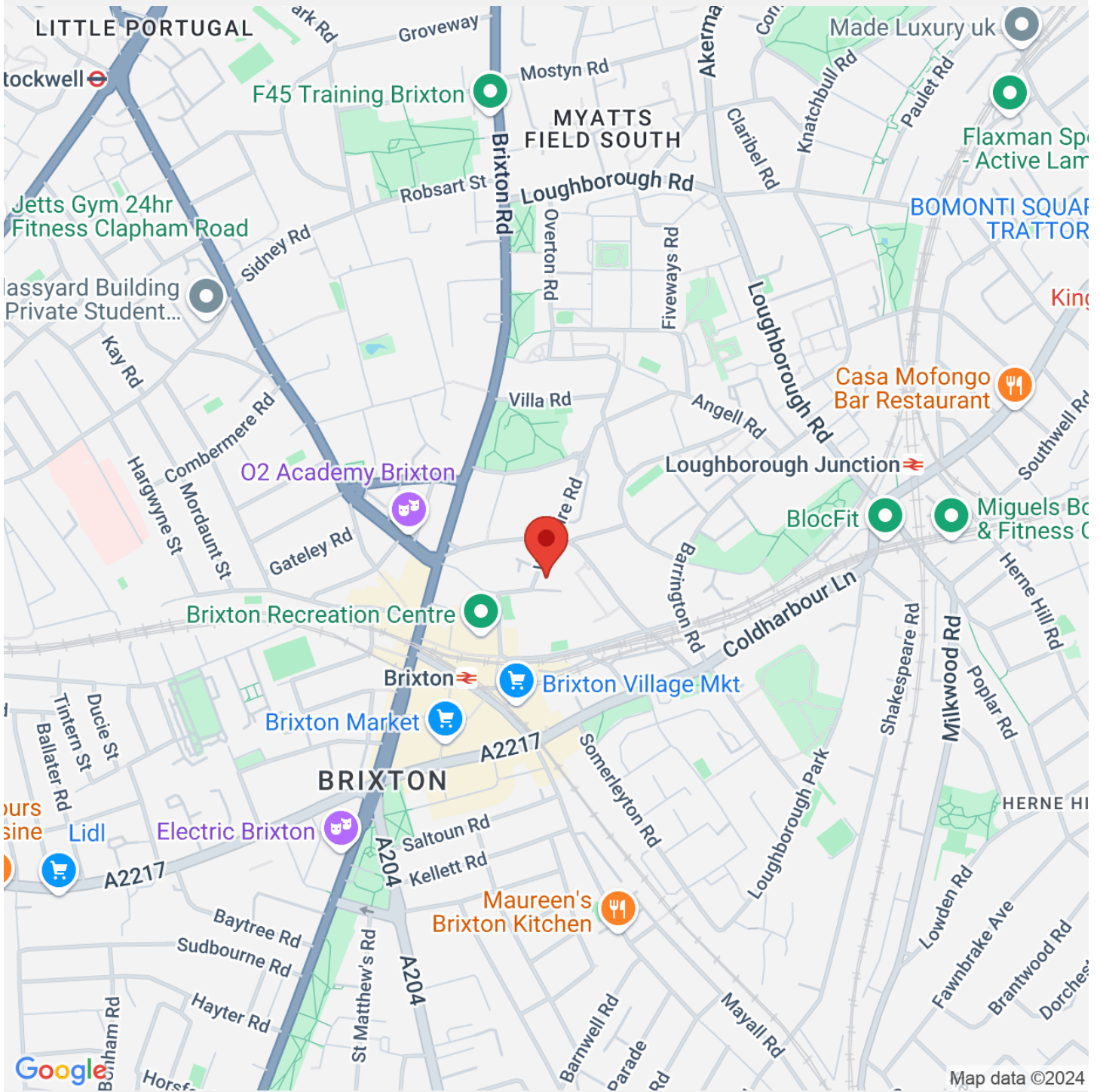
4th Floor, Lee Garden 3,
Causeway Bay, Hong Kong

+852 3963 8411

SALES | LETTINGS | PROPERTY MANAGEMENT | PROPERTY INVESTMENTS



GLOBAL
HOUSE
ESTATES



35a St Georges Road,
London SE1 6EW
+44 (0) 207 401 2020

www.globalhouseestates.com

4th Floor, Lee Garden 3,
Causeway Bay, Hong Kong
+852 3963 8411

SALES | LETTINGS | PROPERTY MANAGEMENT | PROPERTY INVESTMENTS