



Plot 2 Letcombe Bowers Farm, Nr. Wantage, OX12 9NG

Guide price £1,195,000

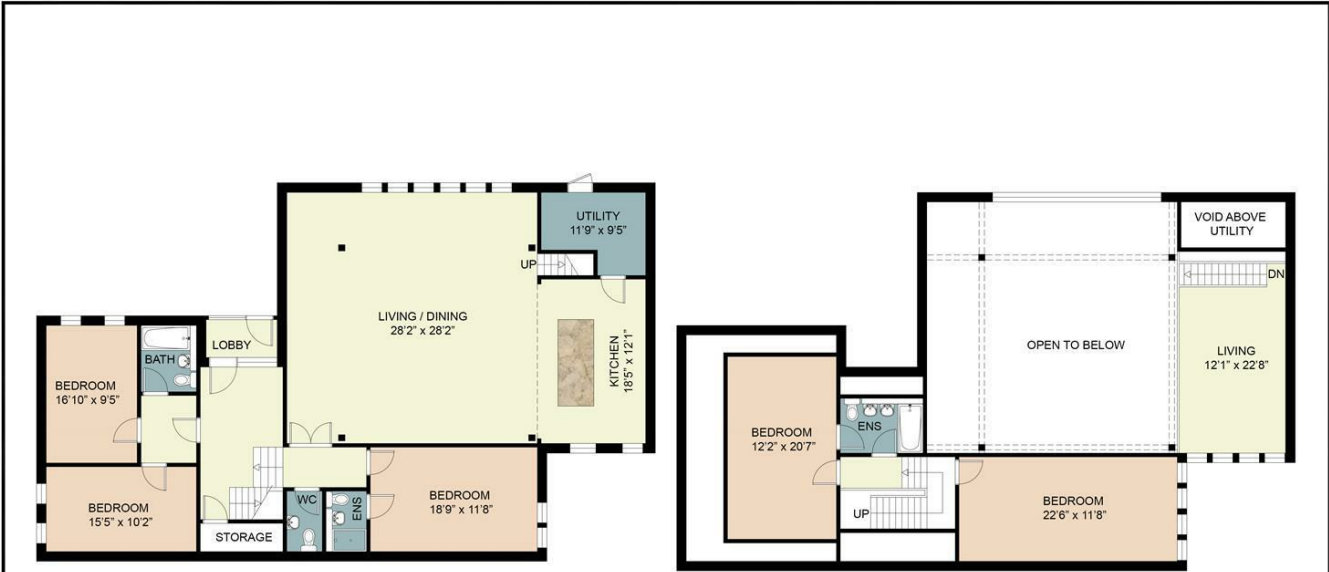
Fancy waking up to this view every morning? Coming soon, Stowhill Estates brings you Letcombe Bowers.

This exclusive and private development of just 6 luxury homes to be built by a renowned developer will be situated in the spectacular Oxfordshire countryside, approximately 90 minutes from Central London. The location offers peaceful rural living yet is just four miles from Wantage - one mile of which is your private driveway!

4 barn conversions and 2 incredible detached homes ranging from 2300sq ft to over 3000sq ft. Prices from £900,000. Due to be ready summer 2021.

Please call Michael or Lucy on 01235 751888
www.stowhillestates.com

Please call Michael or Lucy on 01235 751888
www.stowhillestates.com



FIRST FLOOR PLAN

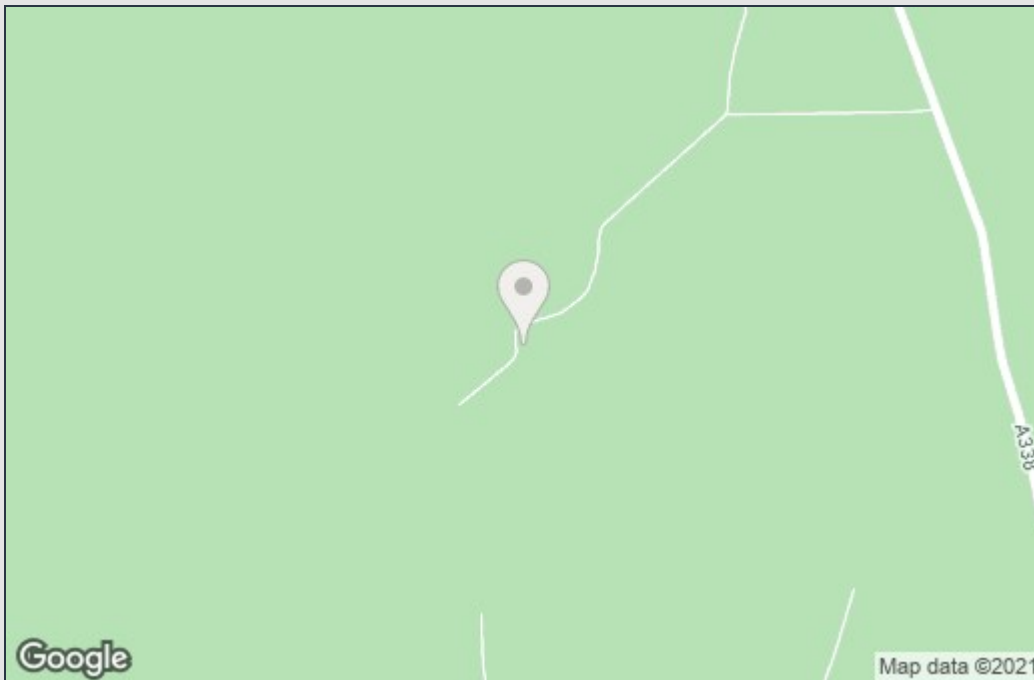
SECOND FLOOR PLAN

Unit 2		
Bed 1	18'9" x 11'8"	5.73m x 3.58m
Bed 1 ES	6'9" x 4'6"	2.06m x 1.39m
Bed 2	16'10" x 9'5"	5.15m x 2.89m
Bed 3	15'5" x 10'2"	4.72m x 3.12m
Bathroom	7'5" x 6'2"	2.27m x 1.89m
Living/Dining	28'2" x 28'2"	8.6m x 8.6m
Utility	11'9" x 9'5"	3.59m x 2.88m
Kitchen	18'5" x 12'1"	5.62m x 3.69m

Bed 1	20'7" x 12'2"	6.28m x 3.72m
Bed 1 ES	9'3" x 6'3"	2.83m x 1.91m
Bed	22'6" x 11'8"	6.88m x 3.57m
Living	22'8" x 12'1"	6.91m x 3.7m

This floor plan including furniture, fixture measurements and dimensions are approximate and for illustrative purposes only. Boxbrownie.com gives no guarantee, warranty or representation as to the accuracy and layout. All enquiries must be directed to the agent, vendor or party representing this floor plan.

Plot 2



DISCLAIMER

These details are intended as just a guide and do not form part of any specification or contract. The dimensions are to the widest part of each room and approximate, drawn to RICS standards. These images used are for illustration purposes only. All particulars are produced in good faith and nothing herein or verbal statements made shall constitute part of any contract. Please note that in some circumstances images may have been digitally furnished through 'virtual staging' to give an idea of what the property could look like. The actual property may be unfurnished or furnished differently.

Please call Michael or Lucy on 01235 751888

www.stowhillestates.com