

## Plot 6 Letcombe Bowers Farm, Nr. Wantage, OX12 9NG

### Guide price £1,250,000

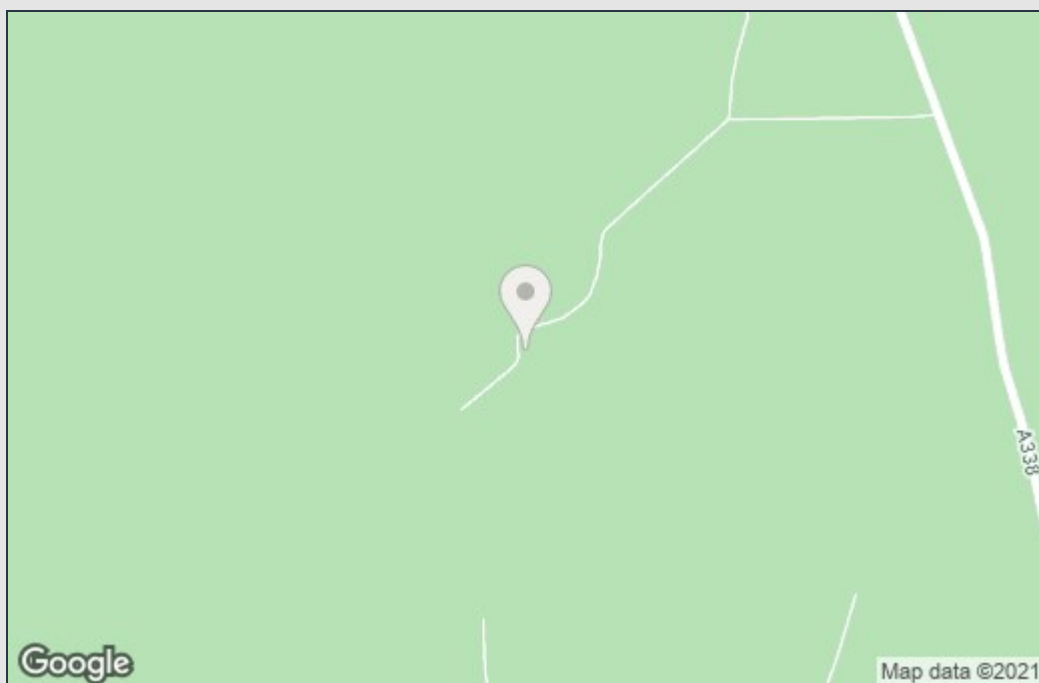
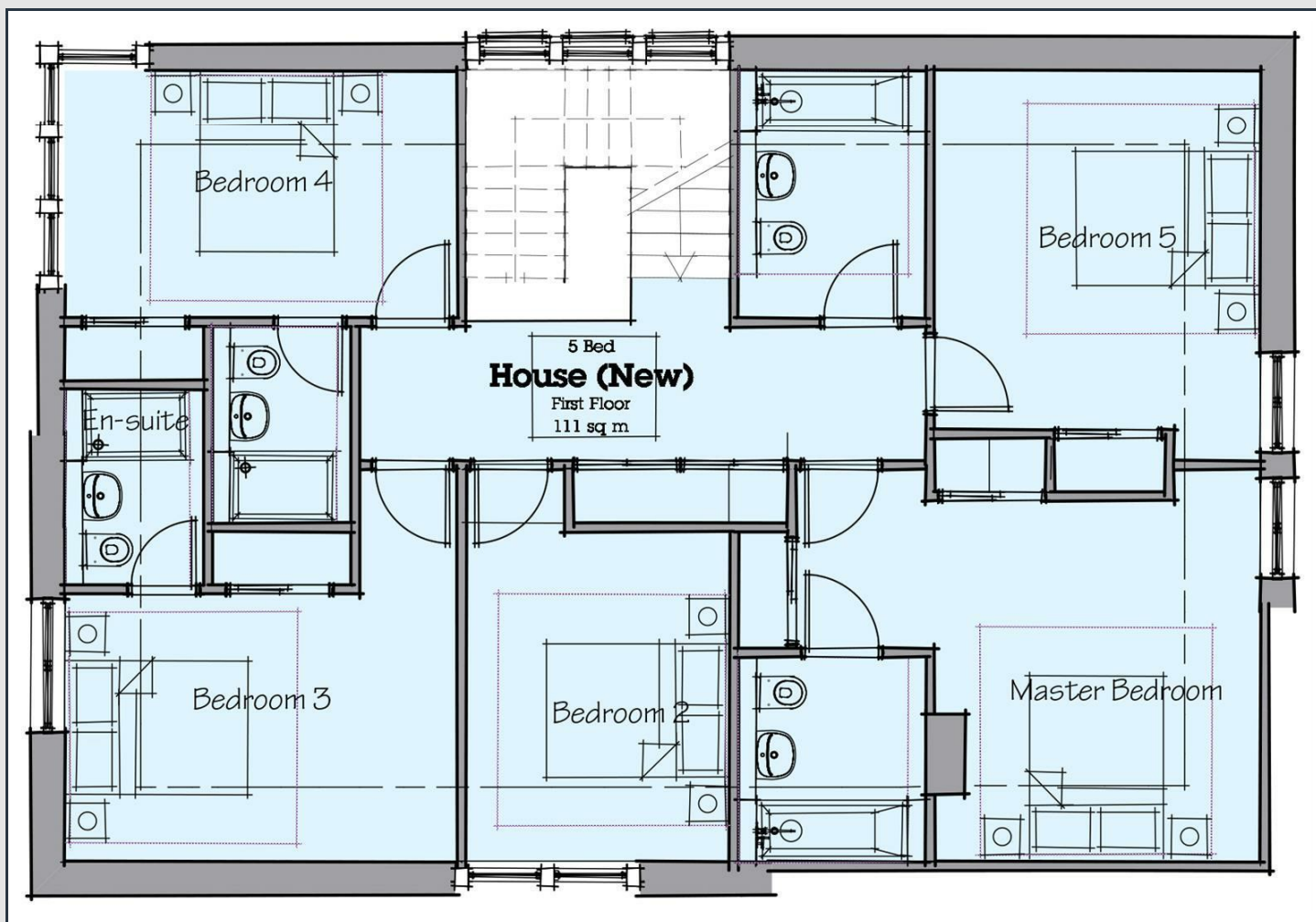
Fancy waking up to this view every morning? Coming soon, Stowhill Estates brings you Letcombe Bowers.

This exclusive and private development of just 6 luxury homes to be built by a renowned developer will be situated in the spectacular Oxfordshire countryside, approximately 90 minutes from Central London. The location offers peaceful rural living yet is just four miles from Wantage - one mile of which is your private driveway!

4 barn conversions and 2 incredible detached homes ranging from 2300sq ft to over 3000sq ft. Prices from £900,000. Due to be ready summer 2021.

Please call Michael or Lucy on 01235 751888  
[www.stowhillestates.com](http://www.stowhillestates.com)

Please call Michael or Lucy on 01235 751888  
[www.stowhillestates.com](http://www.stowhillestates.com)



**DISCLAIMER**

These details are intended as just a guide and do not form part of any specification or contract. The dimensions are to the widest part of each room and approximate, drawn to RICS standards. These images used are for illustration purposes only. All particulars are produced in good faith and nothing herein or verbal statements made shall constitute part of any contract. Please note that in some circumstances images may have been digitally furnished through 'virtual staging' to give an idea of what the property could look like. The actual property may be unfurnished or furnished differently.

Please call Michael or Lucy on 01235 751888  
[www.stowhillestates.com](http://www.stowhillestates.com)