



| Carrwood Road | Cheshire



JORDAN FISHWICK
EXCLUSIVE



£4,750,000



Located on Hale Barns premium road, this is an exquisite home of immense proportions and superior specification. Jordan Fishwick Exclusive are delighted to showcase this stunning six bedroom six bathroom detached house, spanning 8005sqft of living space.

Boasting a lower ground floor leisure suite, gated access opening to ample off road parking which leads to the attractive and imposing front aspect and integral double garage. The gardens encapsulate this home perfectly with a tiered lawn, entertainment terrace and further raised terrace areas, and mature planting borders. All offering the perfect setting for entertaining or relaxing.

Upon entry through the large storm porch, you are met via the main entrance hall with the bespoke and stylish glass staircase. With access to Three reception rooms, kitchen breakfast area and kitchen breakfast area with its range of Boffi units and Miele appliances, with large centre islands. There is also further access to the DWC, integral double garage.

The lower ground leisure suite provides facilities such as, games and sitting area, entertainment area with bar, cinema room, gym, steam room/ sauna, kitchenette and WC's. There is also the wine cellar, and store and plant rooms. The Sitting area provides access out towards the garden, entertaining terrace and outdoor bar area.

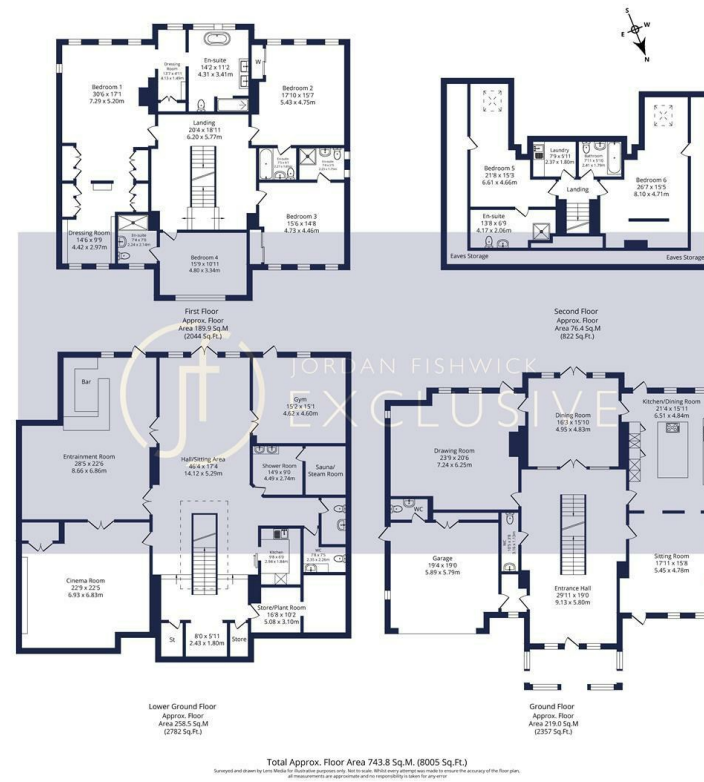


- Immaculately Presented Throughout
- Multiple Reception Rooms

- 6 Bedroom Detached
- Views out towards countryside



- Leisure Facilities - Gym, Cinema Room, Entertainment Room, Steam Room, Wine cellar
- Principal suite with his and her dressing rooms and ensuite



Jordan Fishwick
172 Ashley Road
Altrincham
Cheshire
WA15 9SF

enquiries@jifexclusive.co.uk

IMPORTANT: we would like to inform prospective purchasers that these sales particulars have been prepared as a general guide only. A detailed survey has not been carried out, nor the services, appliances and fittings tested. Room sizes should not be relied upon for furnishing purposes and are approximate. If floor plans are included, they are for guidance only and illustration purposes only and may not be to scale. If there are any important matters likely to affect your decision to buy, please contact us before viewing the property.