



Griceson Close

Ollerton



Offers in the Region Of £235,000

(Chadwells
Estate & Letting Agents





*Spacious bungalow in idyllic
location....*





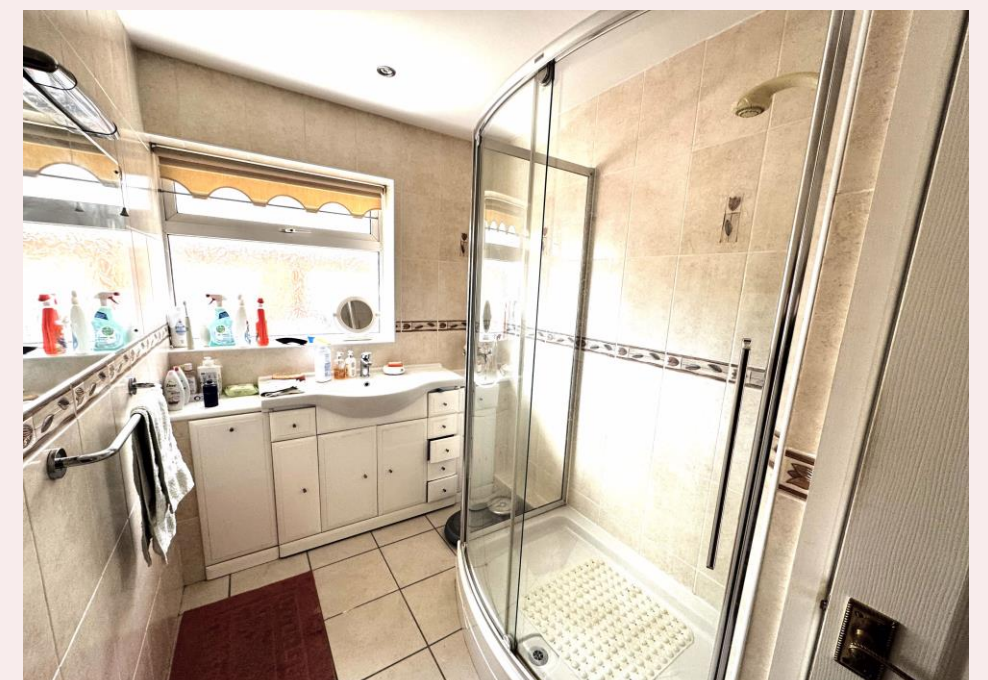
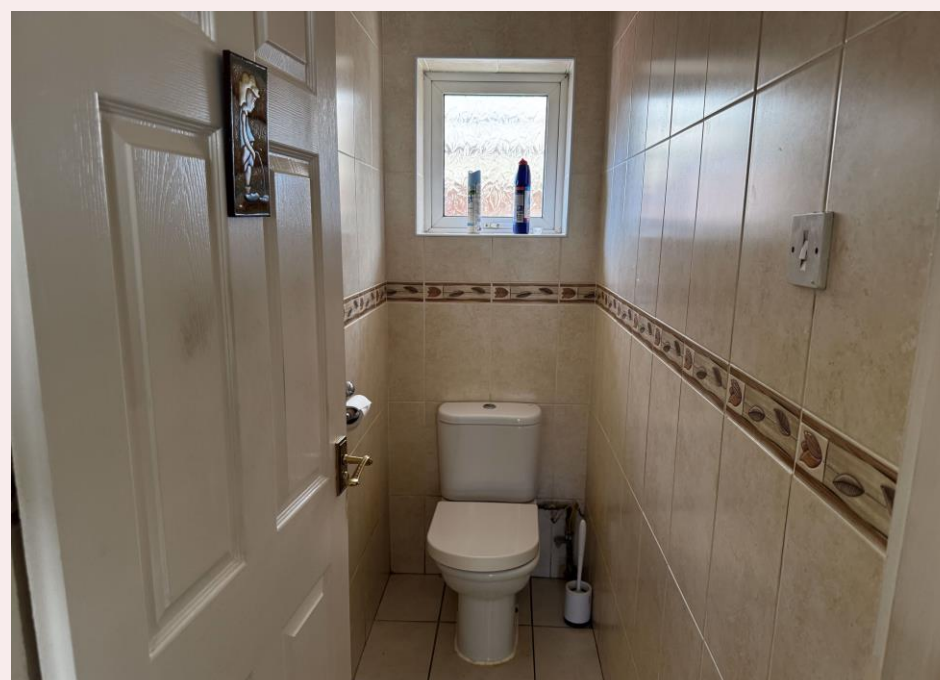
Griceson Close





Welcome

Situated on the outskirts of Ollerton in a quiet cul-de-sac, this spacious bungalow has a lot to offer. In need of some moderisation and ready for you to turn into your new home. Internally the property boasts a bright and spacious lounge, kitchen/dining room, utility , shower room with separate W/C, large entrance hallway with an abundance of storage and two good sized bedrooms. Great outdoor spaces with the front laid mainly to lawn and the rear being a low maintenance patio and small lawned areas. The property further benefits from double glazing, gas central heating and private driveway to allow for off-road parking. It's rare for properties to become available in this area, we highly recommend arranging an early viewing to avoid missing out.



Step inside...

Entrance Porch

With door leading into entrance hall.

Entrance Hall

Enter through porch door into the entrance hall, with carpet flooring, two ceiling lights, window to side aspect, radiator and doors leading to the lounge, kitchen/diner, two bedrooms, shower room and W/C.

Lounge *14' 11" x 12' 5" (4.55m x 3.79m)*

The bright and airy lounge has carpet flooring, uPVC window to the front aspect, radiator, ceiling light, focal fireplace with electrical fire. French doors leading to uPVC conservatory.

Kitchen/Diner *10' 11" x 13' 11" (3.33m x 4.25m)*

The kitchen is fitted with a range of wall and base units and roll top work surfaces with sink, drainer and mixer tap insert. Tiled splash backs and flooring throughout, radiator, uPVC window to rear aspect and uPVC door leading to side and rear of the property.

Conservatory *12' 5" x 11' 2" (3.79m x 3.40m)*

With tiled flooring, radiator and uPVC French doors leading to the rear garden.

Bedroom One *11' 6" x 14' 11" (3.50m x 4.55m)*

With carpet flooring, built in wardrobes, radiator and uPVC windows to the front and side aspects.

Bedroom Two *8' 6" x 9' 11" (2.60m x 3.03m)*

With carpet flooring, radiator and uPVC window to the side aspect.

Shower Room *5' 10" x 9' 10" (1.78m x 2.99m)*

The shower room is fitted with a two piece suite comprising of double shower, low level shower tray with glass screen and electric shower. Hand wash basin with surrounding vanity units. Fully tiled walls and floor, radiator and obscure uPVC windows to the side aspect.

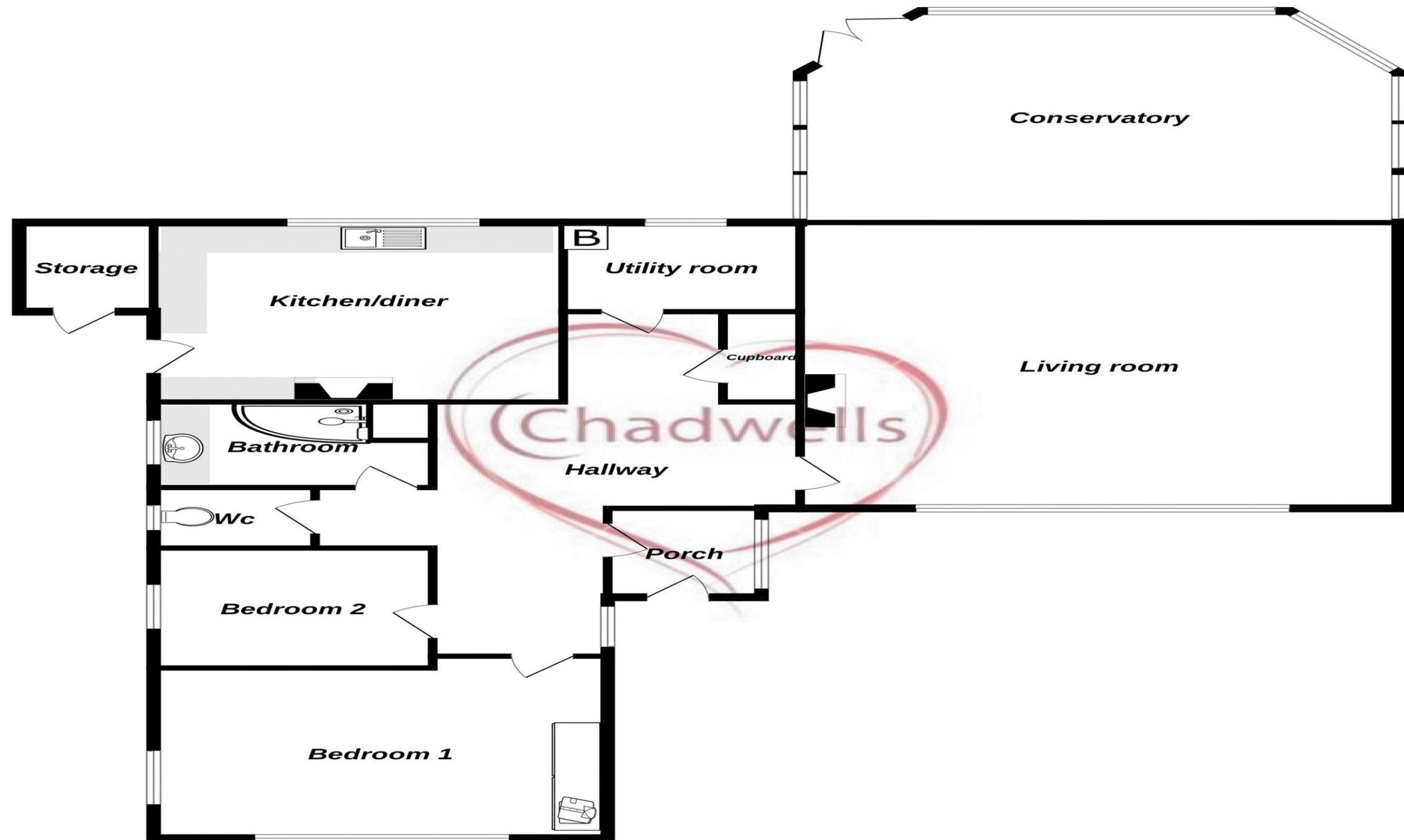
W/C *2' 7" x 6' 6" (0.78m x 1.99m)*

Low flush W/C. Fully tiled wall and floor. Obscure uPVC window to side aspect.

Externally

To the front of the property the garden is mainly laid to lawn with a path leading to both the front and side entrances. A large driveway for private off road parking. The private, fenced rear garden is partly laid to lawn with a low maintenance patio area outside the conservatory.

Ground Floor



Whilst every attempt has been made to ensure the accuracy of the floorplan contained here, measurements of doors, windows, rooms and any other items are approximate and no responsibility is taken for any error, omission or mis-statement. This plan is for illustrative purposes only and should be used as such by any prospective purchaser. The services, systems and appliances shown have not been tested and no guarantee as to their operability or efficiency can be given.
Made with Metropix ©2025



Selling Homes with Bespoke Lifestyle Photography

Chadwells
Estate & Letting Agents

If you'd like to view this amazing
property, give us a call.

We'd Love To Show You Around!

Telephone: 01623 861 861

 **Chadwells**
Estate & Letting Agents