



## Northbeck Grange, Bradford, BD7

£1,250 PCM

Experience the allure of Northbeck Grange, a new development of 2 and 3 bedroom homes close to the vibrant city of Bradford.

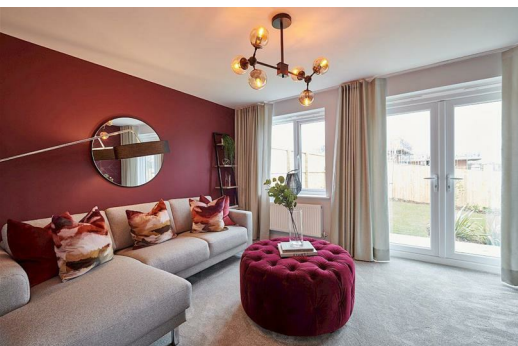
Welcome to The Tyrone, a rental property tailored for contemporary family living and entertaining.

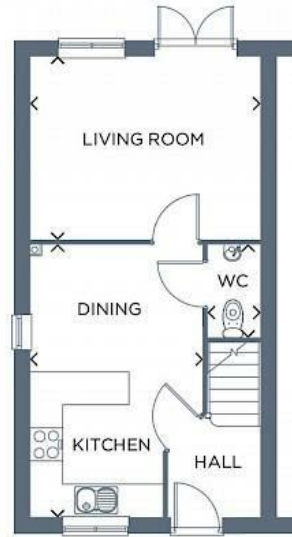
This stylish three-bedroom house exudes modern charm and functionality. Its open-plan kitchen-diner is a culinary enthusiast's dream, boasting a generously sized L-shaped worktop that effortlessly combines practicality with sophistication. Step through the French doors from the inviting living room and discover a harmonious transition between the indoor and outdoor spaces.

As you Ascend to the upper level, a world of comfort awaits. There are three well-appointed bedrooms, offering ample space for relaxation and personalisation. The family bathroom, adorned with Porcelanosa tiling, is a relaxing place to get ready for the day or have a nice long soak.

Completing this home perfectly is a detached garage, providing secure parking and additional storage options.

Indulge in the contemporary allure of the Tyrone and make it your new place to create cherished family moments and host unforgettable gatherings.





Energy Efficiency Rating		Environmental Impact (CO <sub>2</sub> ) Rating	
Current	Potential	Current	Potential
84	97	D	B
England & Wales		England & Wales	

**Ascend**  
Built on higher standards