



5-7 New York Road, Leeds

Offers In The Region Of £170,000

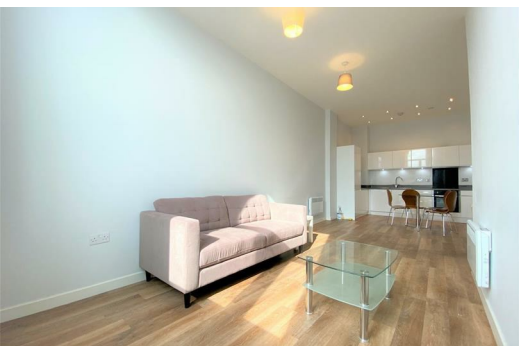
Welcome to Tate House, the most exciting residential development in Leeds city centre.

The internal spec is something to really appreciate. With spacious and flexible living spaces, engineered wood flooring and integrated appliances in your uber-modern kitchen, you'll love living in this contemporary property. You have 2 decent sized bedrooms and an en-suite off the master too – this is in addition to the main bathroom which is crisp and modern.

Did we mention that this apartment is perfect for investors? The current rent is £925pcm.

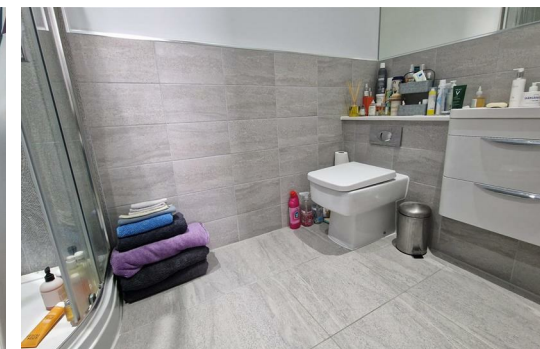
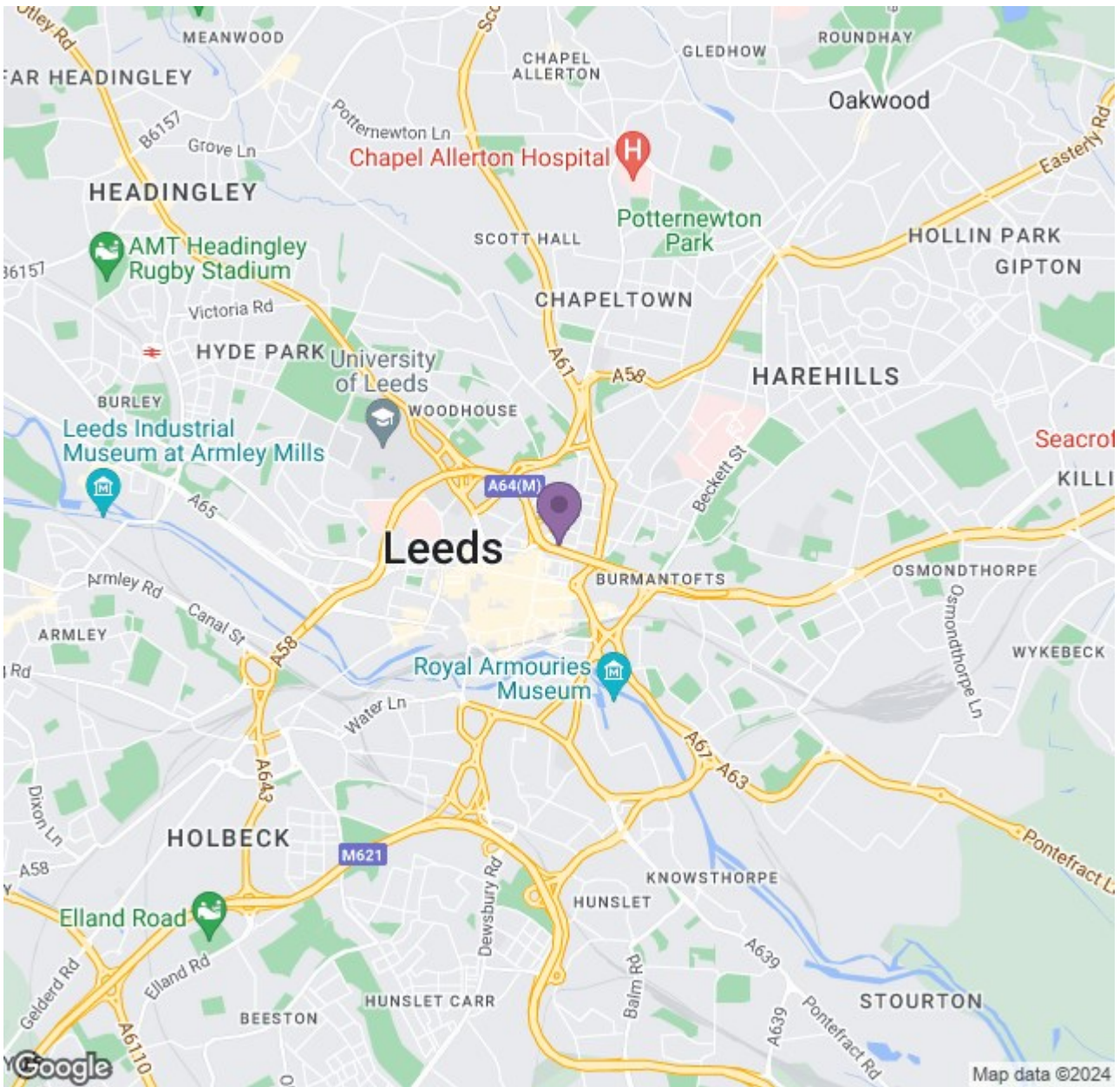
If you wish to live here, you'll experience all the perks of city centre living. Tate House is right in the heart of the city's Northern Quarter and is under a 5-minute walk to a number of commercial and retail outlets. The train station is within walking distance and you have doorstep access to the inner ring road and motorway. Everything Leeds has to offer is virtually right at your fingertips.

EPC Rating - C
Tenure - Leasehold
Ground Rent - £275pa
Service Charge - £TBC
Council Tax Band - D £1721pa



Ascend

Built on higher standards



Energy Efficiency Rating		Environmental Impact (CO ₂) Rating	
Current	Target	Current	Target
Energy A	Energy B	Carbon 20	Carbon 15
Energy B	Energy C	Carbon 25	Carbon 20
Energy C	Energy D	Carbon 30	Carbon 25
Energy D	Energy E	Carbon 35	Carbon 30
Energy E	Energy F	Carbon 40	Carbon 35
Energy F	Energy G	Carbon 45	Carbon 40
Energy G	Energy H	Carbon 50	Carbon 45
Energy H	Energy I	Carbon 55	Carbon 50

England & Wales

Ascend

Built on higher standards