



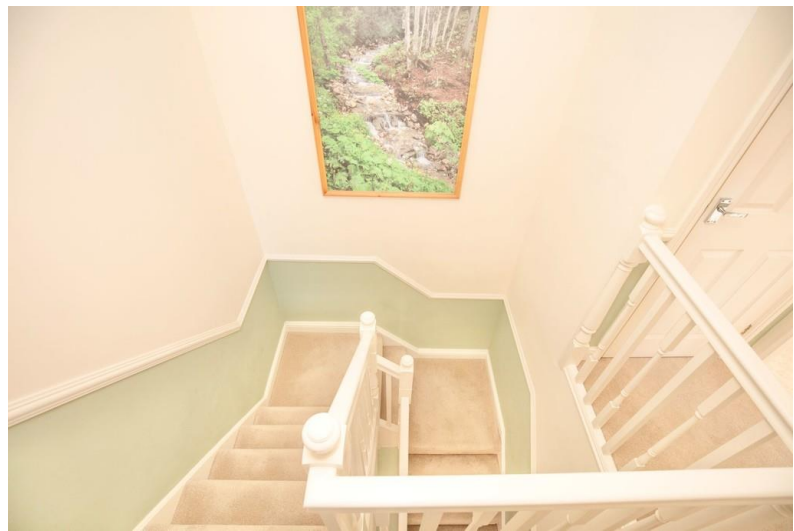
**Beckside
Horsford
Norwich**

- EXECUTIVE DETACHED HOUSE
- 4 DOUBLE BEDROOMS (MASTER EN SUITE)
- 2 RECEPTION ROOMS
- 19'11" KITCHEN/BREAKFAST ROOM

Offers In Excess Of £425,000


reality





PROPERTY SUMMARY

BIG & BEAUTIFUL...

This is a traditional, well proportioned detached family home offering four double bedrooms, all with fitted wardrobes, a re-fitted en suite off the master and a luxury four piece bathroom suite, featuring a double ended bath. Downstairs, you are welcomed by a spacious entrance hall, which leads to the cloakroom, bay fronted dining room, 22'0" bay fronted sitting room, with double doors opening into the conservatory, which offers you first glimpse of the delights outside. The 19'11" kitchen/breakfast room boasts oak cabinets and granite worktops and completing the tour is a utility room. This sizeable home comes with UPVC double glazing, gas central heating, solar panels (leased), 'Amtico' flooring downstairs, a stunning landscaped rear garden and a double garage with electric roller door.





Notes on Sale: These particulars are believed to be accurate, but no guarantee of their accuracy can be made. These particulars do not form part of any contract.



01603 756898

65 Grove Road, Norwich, NR1 3RL
contact@realityestateagents.co.uk