



36 Campion Way
Hethersett
Norwich

- FOUR BEDROOMS (ONE EN SUITE)
- 20'3" KITCHEN/DINING ROOM
- 20'3" LOUNGE
- CARPORT & GARAGE

Offers in Excess of £300,000





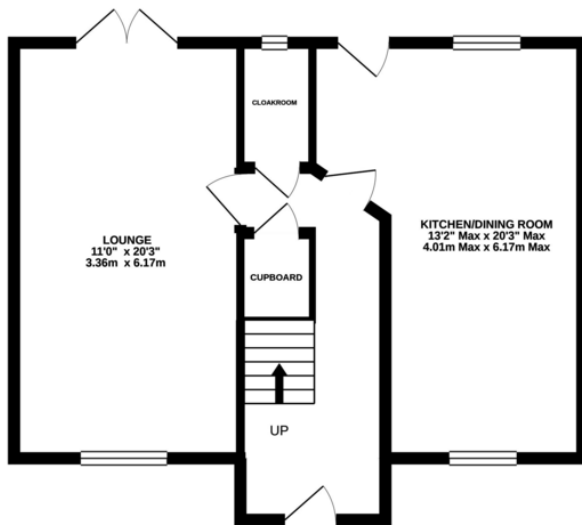
PROPERTY SUMMARY

MOVING ON UP... Could this be next home?

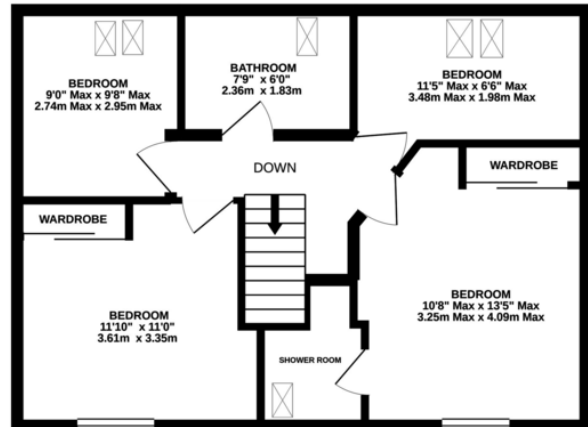
Positioned within an established development in the popular village of Hethersett, is this beautifully presented family home. The property boasts a re-fitted 20'3" kitchen/dining room, 20'3" lounge, with double doors opening into the garden and a cloakroom on the ground floor. This is complimented by four bedrooms, an en suite shower room and family bathroom upstairs. Three of the bedrooms are doubles and two have the advantage of fitted wardrobes. The gas fired boiler was replaced just under a year ago to a 'Worcester Bosch' and all of the windows and doors are double glazed. Outside, the rear garden has been landscaped and features two timber decked



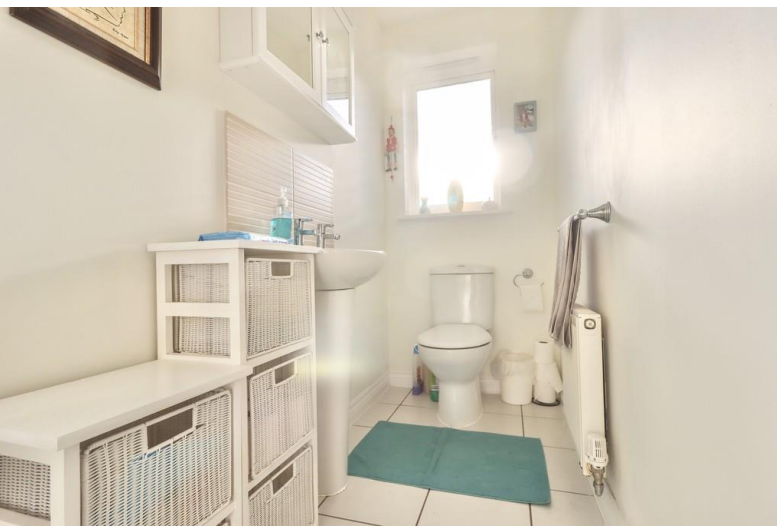
GROUND FLOOR



1ST FLOOR



Whilst every attempt has been made to ensure the accuracy of the floorplan contained here, measurements of doors, windows, rooms and any other items are approximate and no responsibility is taken for any error, omission or mis-statement. This plan is for illustrative purposes only and should be used as such by any prospective purchaser. The services, systems and appliances shown have not been tested and no guarantee as to their operability or efficiency can be given.
Made with Metropix 6/2021





Notes on Sale: These particulars are believed to be accurate, but no guarantee of their accuracy can be made. These particulars do not form part of any contract.



01603 756898

65 Grove Road, Norwich, NR1 3RL
contact@realityestateagents.co.uk