



Wentworth Green

Norwich

NR4 6AE

- NO ONWARD CHAIN
- SOUGHT AFTER ADDRESS
- CORNER PLOT
- GARAGE & DRIVEWAY

Offers In Excess Of £485,000

reality



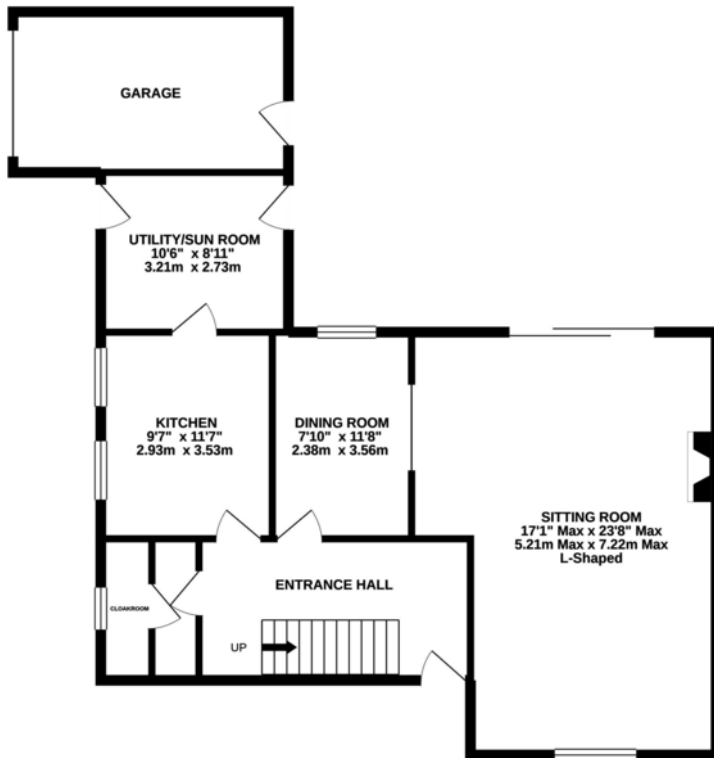


PROPERTY SUMMARY

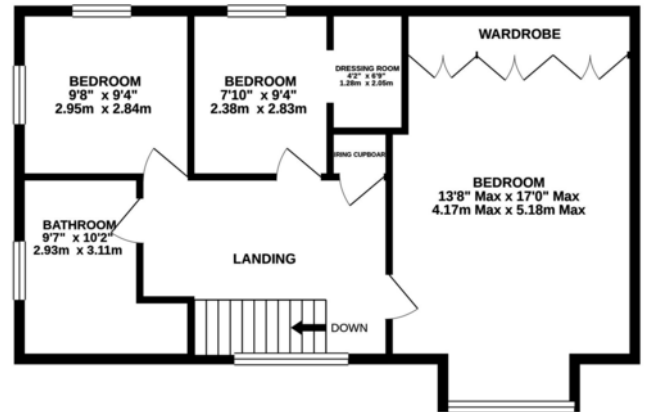
NO ONWARD CHAIN... Opportunities to secure a home on this sought after road are few and far between, so you will need to act quick if you're interested. This property is set on a corner plot, so has gardens to all aspects along with a garage with an electric roller door and driveway. The property is warmed by a gas fired boiler and the majority of windows are UPVC double glazed. The accommodation features a master bedroom with built in wardrobes, a second bedroom with walk in wardrobe/dressing area, a third double bedroom, family four piece bathroom suite, fitted kitchen, utility/sun room, cloakroom, dining room and a generous sitting room. The sitting room was previously two rooms and could be converted back if required to create a fourth bedroom or home office.



GROUND FLOOR



1ST FLOOR



Whilst every attempt has been made to ensure the accuracy of the floorplan contained here, measurements of doors, windows, rooms and any other items are approximate and no responsibility is taken for any error, omission or mis-statement. This plan is for illustrative purposes only and should be used as such by any prospective purchaser. The services, systems and appliances shown have not been tested and no guarantee as to their operability or efficiency can be given.
Made with Metropix ©2021





Notes on Sale: These particulars are believed to be accurate, but no guarantee of their accuracy can be made. These particulars do not form part of any contract.



01603 756898

65 Grove Road, Norwich, NR1 3RL
contact@realityestateagents.co.uk