



Trory Street

NR2 2RH

- Commercial Premises + Apartment Above
- Prime Location Close To The City Centre
- Former Public House & Cafe
- Development Opportunity

Offers In Excess Of £500,000

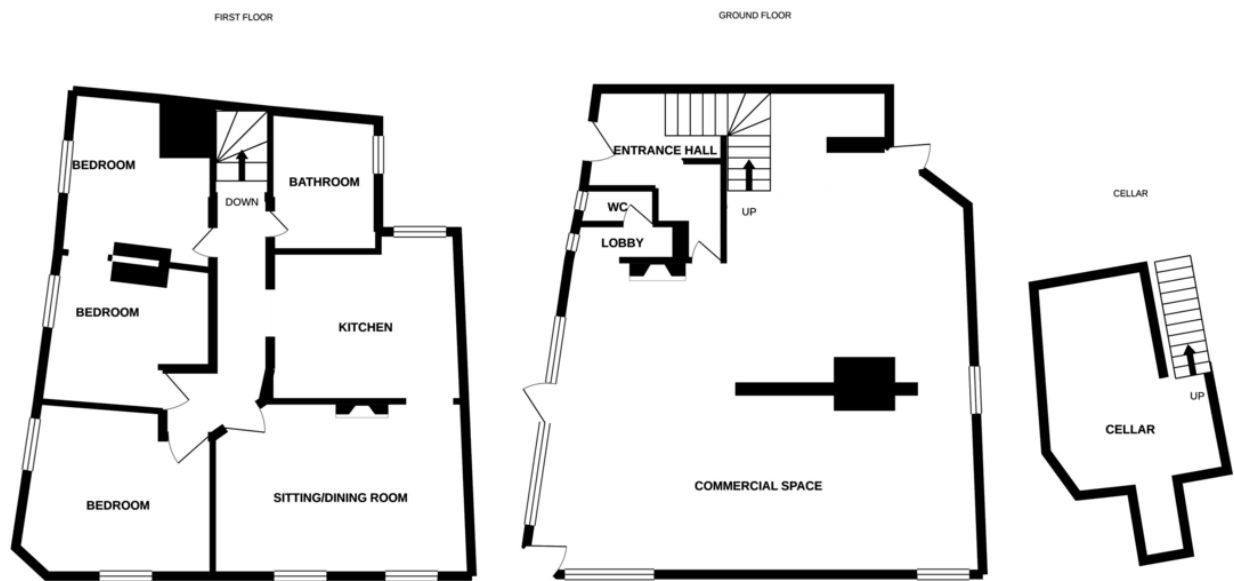




PROPERTY SUMMARY

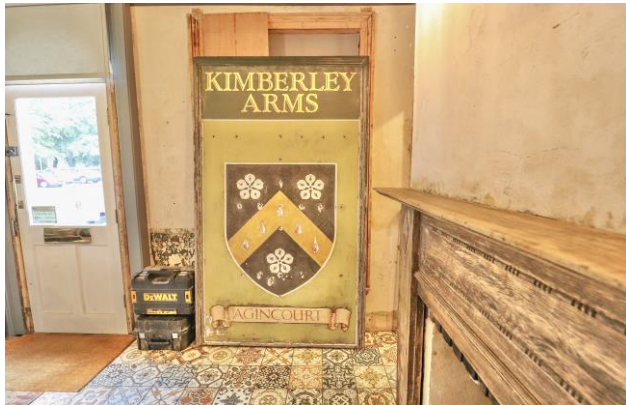
HOME & WORK LIFE BALANCE..... This could be your opportunity to take the plunge and start up your own business or work from this unique live/work property. Sitting on the corner of Trory Street, we are proud to offer for sale the former Kimberley Arms Public House and more recently NR2 coffee shop. This freehold building has both residential and commercial space and is open to other options subject to planning. The upstairs apartment is stunning and features three bedrooms, a modern kitchen, luxury shower room and an open plan sitting/dining room with an original fireplace and exposed brickwork which adds to the character. There is plenty of outside space to the front and multiple parking permits are available. Unusually too, is the up to date alcohol licence for on and off sales.





Whilst every attempt has been made to ensure the accuracy of the floorplan contained here, measurements of doors, windows, rooms and any other items are approximate and no responsibility is taken for any error, omission or mis-statement. This plan is for illustrative purposes only and should be used as such by any prospective purchaser. The services, systems and appliances shown have not been tested and no guarantee as to their operability or efficiency can be given.
Made with Metropix ©2020





Notes on Sale: These particulars are believed to be accurate but no guarantee of their accuracy can be made. These particulars do not form part of any contract.



01603 756898

65 Grove Road, Norwich, NR1 3RL
contact@realityestateagents.co.uk

 /Reality Estate Agents

 @realitynorwich

www.realityestateagents.co.uk

Minimum fee and contract applies - terms and conditions of your current agent must be adhered to



Reality directors Lucy Carne and Adam Thompson
with TV's property guru, Phil Spencer