



## Cecil Road

NR1 2QN

- Sought after address
- 3 Bedrooms off landing
- Good sized garden + Summerhouse & Workshop
- Renovated & modernised

Guide Price £375,000





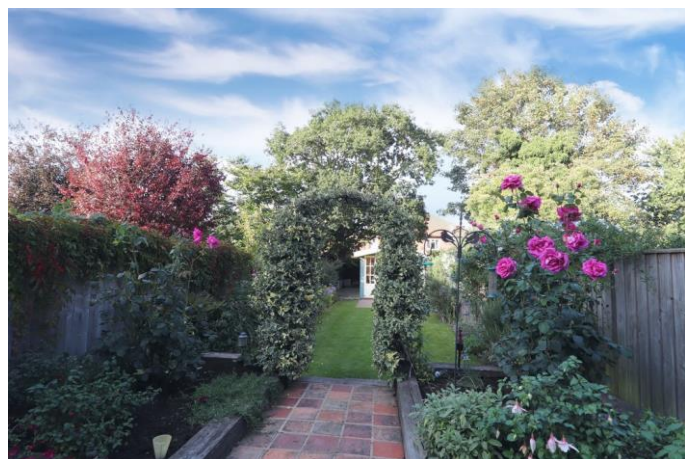


## PROPERTY SUMMARY

SOUGHT AFTER LOCATION!!!

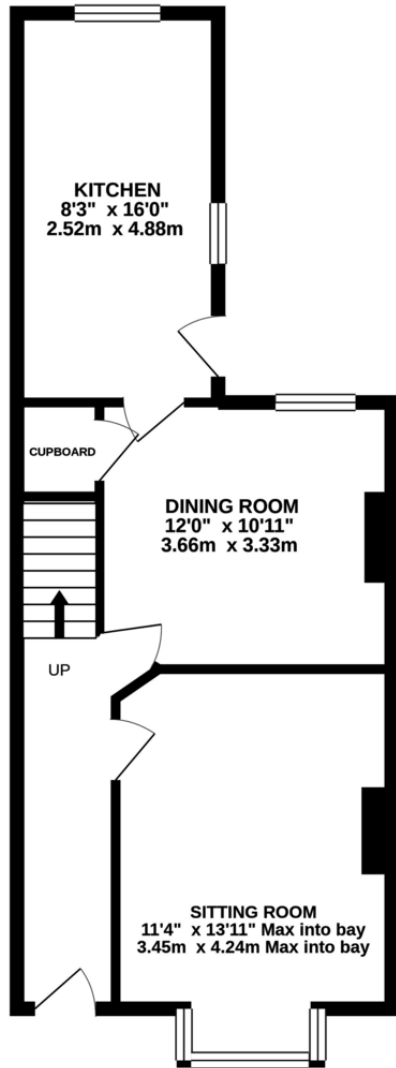
Be quick not to miss out on this character mid terraced, over the passage, bay fronted home, which has been renovated and modernised, whilst keeping the character and charm. All three bedrooms are off the landing and the bathroom is positioned upstairs. The non-bisected rear garden is a lovely size and homes a timber summerhouse with adjoining workshop.

CALL TO FIND OUT MORE AND TO BOOK YOUR VIEWING!!

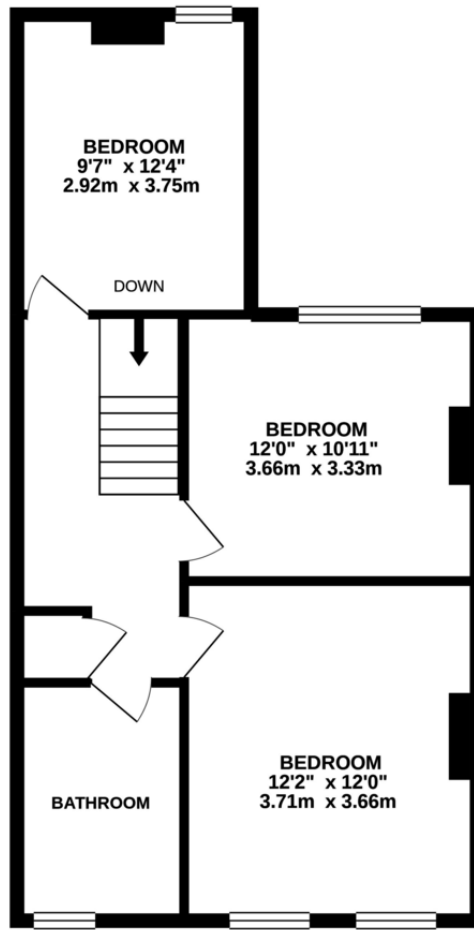




## GROUND FLOOR



## 1ST FLOOR



Whilst every attempt has been made to ensure the accuracy of the floorplan contained here, measurements of doors, windows, rooms and any other items are approximate and no responsibility is taken for any error, omission or mis-statement. This plan is for illustrative purposes only and should be used as such by any prospective purchaser. The services, systems and appliances shown have not been tested and no guarantee as to their operability or efficiency can be given.  
Made with Metropix ©2020







Notes on Sale: These particulars are believed to be accurate but no guarantee of their accuracy can be made. These particulars do not form part of any contract.



**01603 756898**

65 Grove Road, Norwich, NR1 3RL  
[contact@realityestateagents.co.uk](mailto:contact@realityestateagents.co.uk)

/Reality Estate Agents

@realitynorwich

[www.realityestateagents.co.uk](http://www.realityestateagents.co.uk)

Minimum fee and contract applies - terms and conditions of your current agent must be adhered to



Reality directors Lucy Carne and Adam Thompson  
 with TV's property guru, Phil Spencer