



Gunn Street

Foulsham

NR20 5RJ

- DETACHED COTTAGE
- FOUR DOUBLE BEDROOMS
- 25'4" KITCHEN/DINING ROOM
- TWO SPACIOUS RECEPTION ROOMS

Offers In Excess Of £400,000


reality



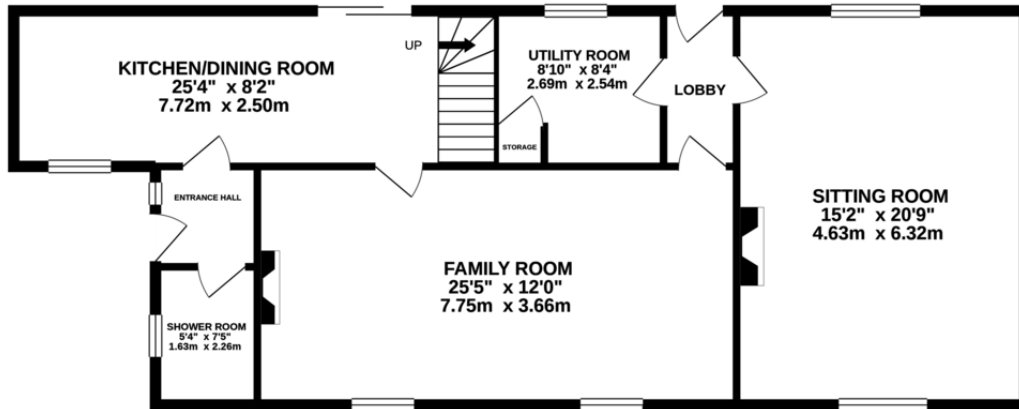


PROPERTY SUMMARY

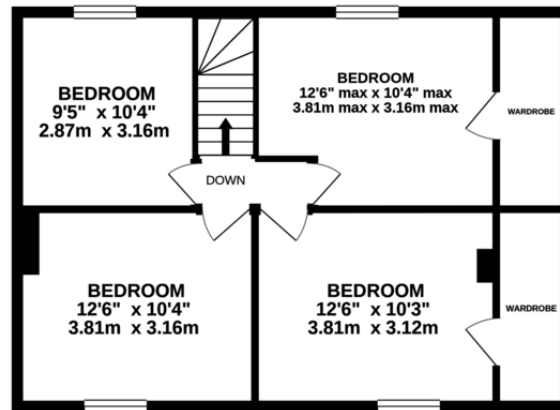
FORMERLY TWO COTTAGES... This detached family home is located within a rural Norfolk village, backing onto farmland. The property has been in the same ownership for over 40 years, and has been a much loved home. The accommodation consists of an entrance hall, re-fitted 25'4" kitchen/dining room, with doors opening into the rear garden, which backs onto farmland. A re-fitted shower room, 25'5" family room with multi fuel burner, 20'9" sitting room with wood burner, and a utility on the ground floor. This is complimented by four double bedrooms, two of which have walk-in wardrobes upstairs. The property has oil fired central heating and is fully UPVC double glazed. Outside, to the rear is an enclosed formal landscaped garden, with paved terraces and a timber shed with power. To the front is a low maintenance garden and a driveway, which provides off road parking.



GROUND FLOOR



1ST FLOOR



Whilst every attempt has been made to ensure the accuracy of the floorplan contained here, measurements of doors, windows, rooms and any other items are approximate and no responsibility is taken for any error, omission or mis-statement. This plan is for illustrative purposes only and should be used as such by any prospective purchaser. The services, systems and appliances shown have not been tested and no guarantee as to their operability or efficiency can be given.
Made with Metropix ©2021





Notes on Sale: These particulars are believed to be accurate, but no guarantee of their accuracy can be made. These particulars do not form part of any contract.



01603 756898

65 Grove Road, Norwich, NR1 3RL
contact@realityestateagents.co.uk