

**The Street**  
**Thurton**  
**Norwich**

- CHARACTER VICTORIAN COTTAGE
- 3 DOUBLE BEDROOMS
- 3 RECEPTION ROOMS
- GOOD SIZED GARDEN

**Offers In Excess Of £325,000**

  
**reality**







## PROPERTY SUMMARY

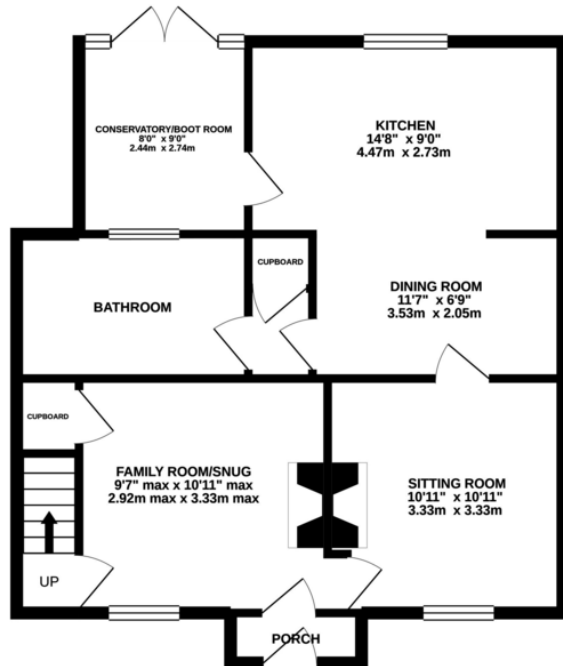
LAUNCHING SATURDAY 4TH DECEMBER...

This beautifully presented, cosy Victorian cottage, oozes character and charm. The property offers so much more, than first meets the eye, including a generous enclosed rear garden, off road parking for three/four cars, oil central heating and UPVC double glazed windows and shutters on the ground floor windows to the front. The ample accommodation, consists of a sitting room with an open fire, family room/snug with wood burner, an open plan farmhouse style kitchen and dining room, conservatory/boot room and a re-fitted four piece bathroom on the ground floor. Upstairs, there are three double bedrooms and a generous WC, which with a bit of reconfiguration, would lend itself as a shower room.

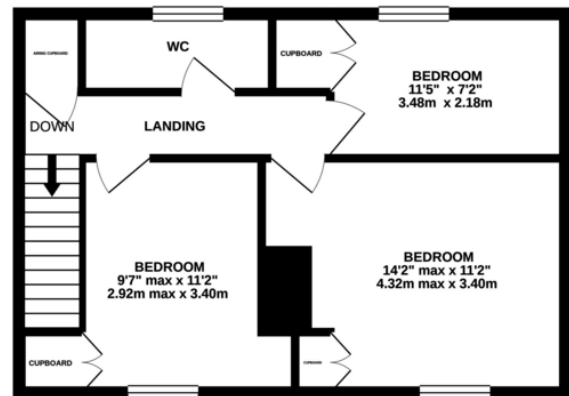
CALL TO BOOK YOUR VIEWING NOW!



## GROUND FLOOR



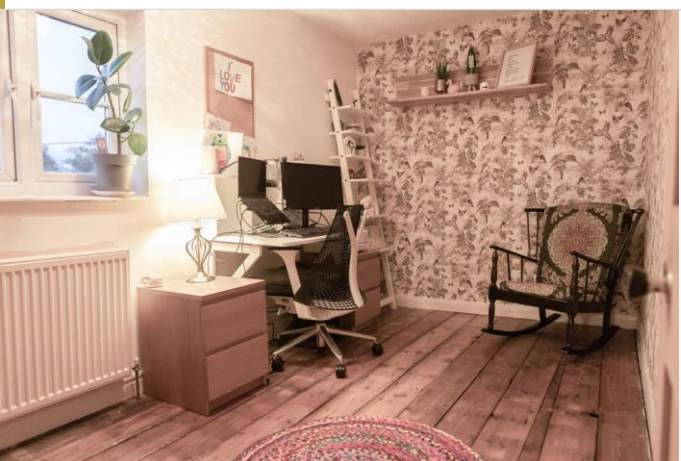
## 1ST FLOOR



Whilst every attempt has been made to ensure the accuracy of the floorplan contained here, measurements of doors, windows, rooms and any other items are approximate and no responsibility is taken for any error, omission or mis-statement. This plan is for illustrative purposes only and should be used as such by any prospective purchaser. The services, systems and appliances shown have not been tested and no guarantee as to their operability or efficiency can be given.  
Made with Metropix ©2021







Notes on Sale: These particulars are believed to be accurate, but no guarantee of their accuracy can be made. These particulars do not form part of any contract.



**01603 756898**

65 Grove Road, Norwich, NR1 3RL  
[contact@realityestateagents.co.uk](mailto:contact@realityestateagents.co.uk)