



**Gunn Street  
Foulsham  
Dereham**

- DETACHED COTTAGE
- 4 DOUBLE BEDROOMS
- PLOT MEASURES 0.45 ACRE (STMS)
- BACKS ONTO FIELDS

**Offers In Excess Of £450,000**



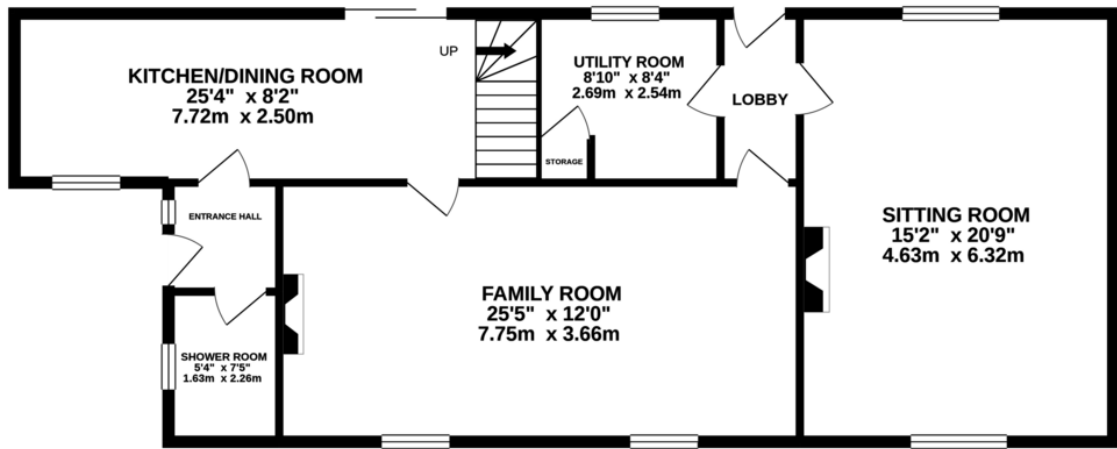


## PROPERTY SUMMARY

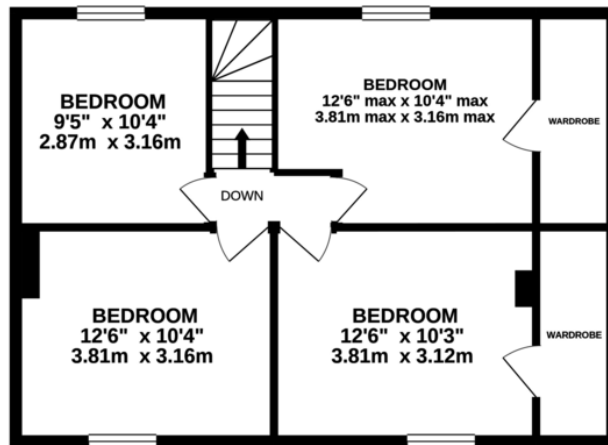
Set on a plot totalling just under half an acre, this detached cottage has been in the same ownership for over 40 years, and has been a much loved home. The accommodation consists of an entrance hall, re-fitted 25'4" kitchen/dining room, with doors opening into the rear garden, which backs onto farmland. A re-fitted shower room, 25'5" family room with multi fuel burner, 20'9" sitting room with wood burner, and a utility on the ground floor. This is complimented by four double bedrooms, two of which have walk-in wardrobes upstairs.



GROUND FLOOR



1ST FLOOR



Whilst every attempt has been made to ensure the accuracy of the floorplan contained here, measurements of doors, windows, rooms and any other items are approximate and no responsibility is taken for any error, omission or mis-statement. This plan is for illustrative purposes only and should be used as such by any prospective purchaser. The services, systems and appliances shown have not been tested and no guarantee as to their operability or efficiency can be given.  
Made with Metropix ©2021





Notes on Sale: These particulars are believed to be accurate, but no guarantee of their accuracy can be made. These particulars do not form part of any contract.



**01603 756898**

65 Grove Road, Norwich, NR1 3RL  
contact@realityestateagents.co.uk