



Mountfield Avenue

Norwich

NR6 5HW

- FULLY REFURBISHED & MODERNISED
- DETACHED BUNGALOW
- GENEROUS LANDSCAPED GARDEN
- 22'9" X 15'5" SUMMERHOUSE

Offers In Excess Of £275,000


reality





PROPERTY SUMMARY

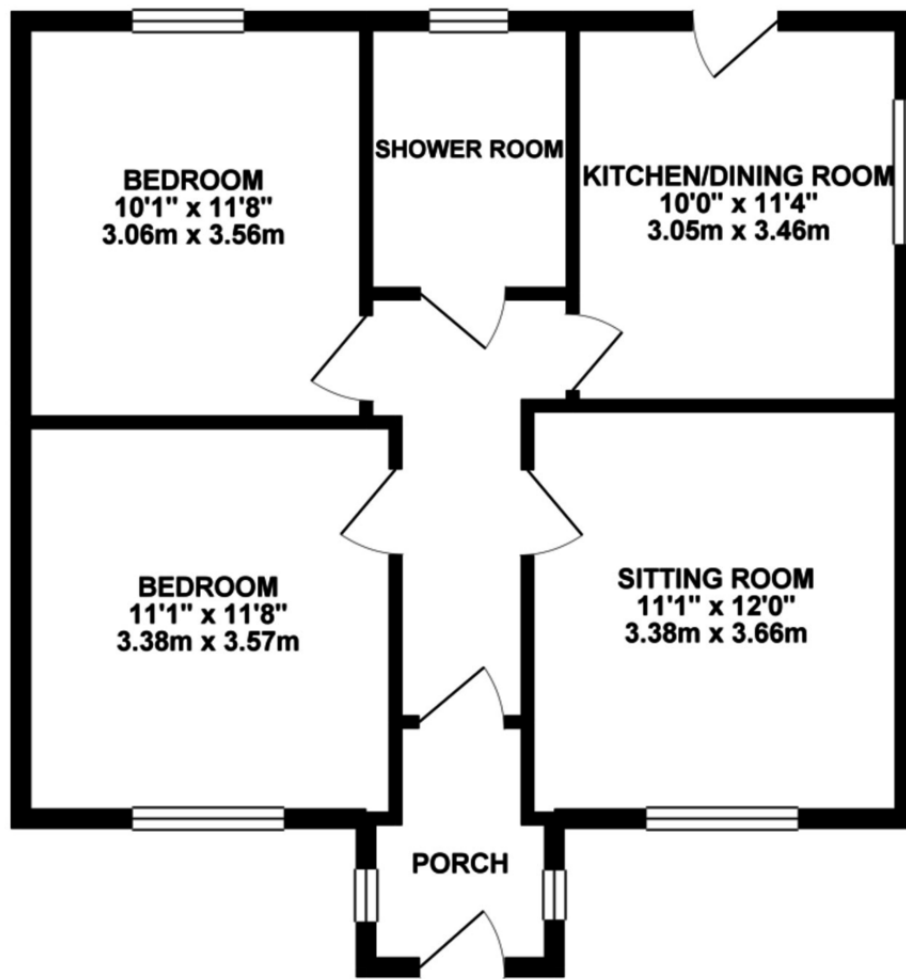
****LAUNCHING SATURDAY 28TH AUGUST****

This detached bungalow has been fully renovated and modernised by the current owners, since purchasing it three years ago. Works have included a full rewire, new gas central heating system, UPVC double glazing, a new roof, new kitchen and new shower room, along with the usual re-flooring and decorating. Outside, the front has been gravelled and the rear has been landscaped to include a substantial terrace and a 22'9" x 15'5" summerhouse/games room/home office. There is also a single garage.

Call to book your slot now!

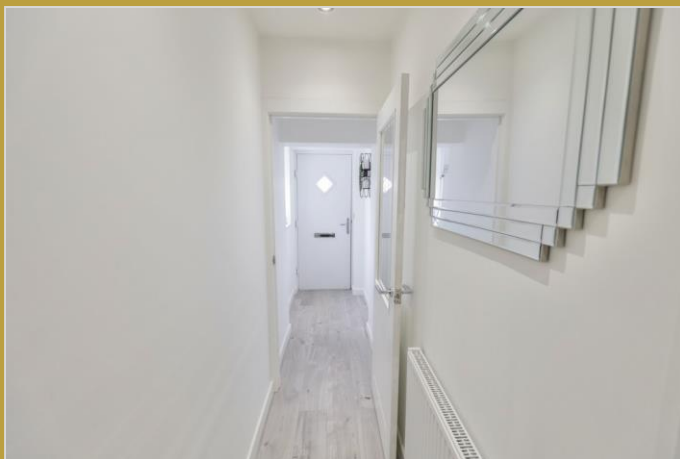


GROUND FLOOR



Whilst every attempt has been made to ensure the accuracy of the floorplan contained here, measurements of doors, windows, rooms and any other items are approximate and no responsibility is taken for any error, omission or mis-statement. This plan is for illustrative purposes only and should be used as such by any prospective purchaser. The services, systems and appliances shown have not been tested and no guarantee as to their operability or efficiency can be given.
Made with Metropix ©2021





Notes on Sale: These particulars are believed to be accurate, but no guarantee of their accuracy can be made. These particulars do not form part of any contract.



01603 756898

65 Grove Road, Norwich, NR1 3RL
contact@realityestateagents.co.uk