



**Hall Road
Norwich
NR1 2PU**

- SUBSTANTIAL EDWARDIAN HOME
- 4 BEDROOMS (3 EN SUITES)
- 3 RECEPTION ROOMS
- WALKING DISTANCE OF CITY CENTRE

Asking Price Of £475,000


reality



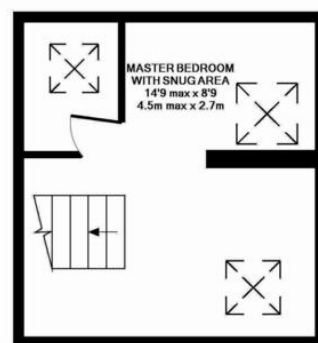
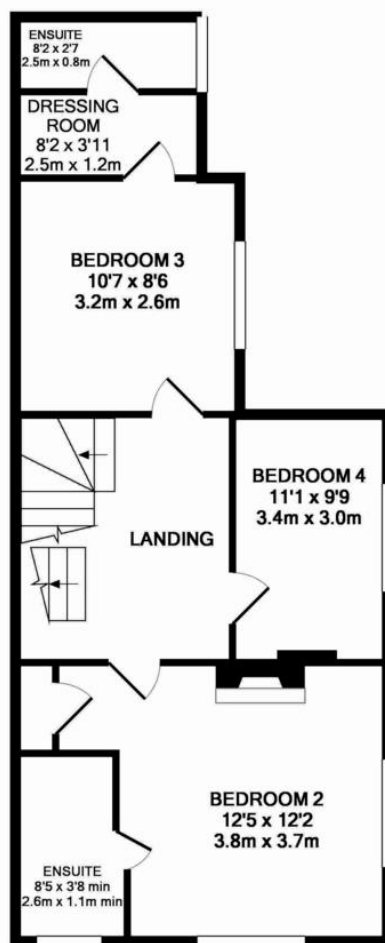
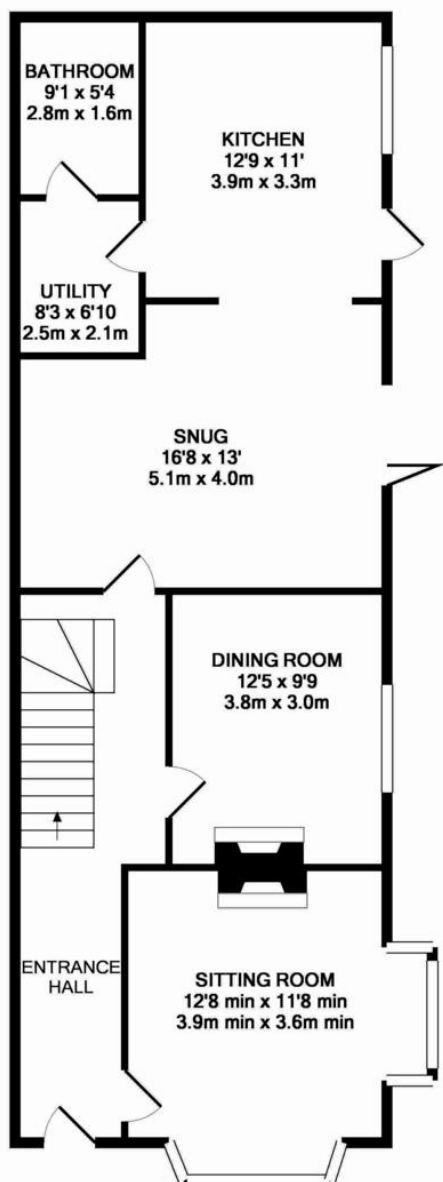


PROPERTY SUMMARY

EDWARDIAN ELEGANCE...

Extended and set on a corner plot, this is a substantial home which offers versatile accommodation, as well as an enclosed garden with artificial grass, and a slate chipped secret garden to the front, so you can enjoy the sunshine throughout the day. To the side is a gated driveway and access into a brick workshop/store with an electric roller door. The property is warmed by a gas boiler, which is less than three years old and all of the windows are double glazed. The accommodation consists of an entrance Hall, dual aspect Sitting Room with wood burner, dining Room, snug with bi-fold doors opening into the garden, fitted kitchen with vaulted ceiling, utility room and ground floor Bathroom with rolled top bath. The second floor is equally as spacious and boasts a bedroom with dressing room





2ND FLOOR

1ST FLOOR

GROUND FLOOR





Notes on Sale: These particulars are believed to be accurate, but no guarantee of their accuracy can be made. These particulars do not form part of any contract.



01603 756898

65 Grove Road, Norwich, NR1 3RL
contact@realityestateagents.co.uk