



**Neylond Crescent**

**Norwich**

**NR6 5QF**

- SEMI DETACHED BUNGALOW
- PITCHED ROOF EXTENSION
- GENEROUS PLOT
- TIMBER GARAGE + AMPLE PARKING

**Offers In Excess Of £275,000**







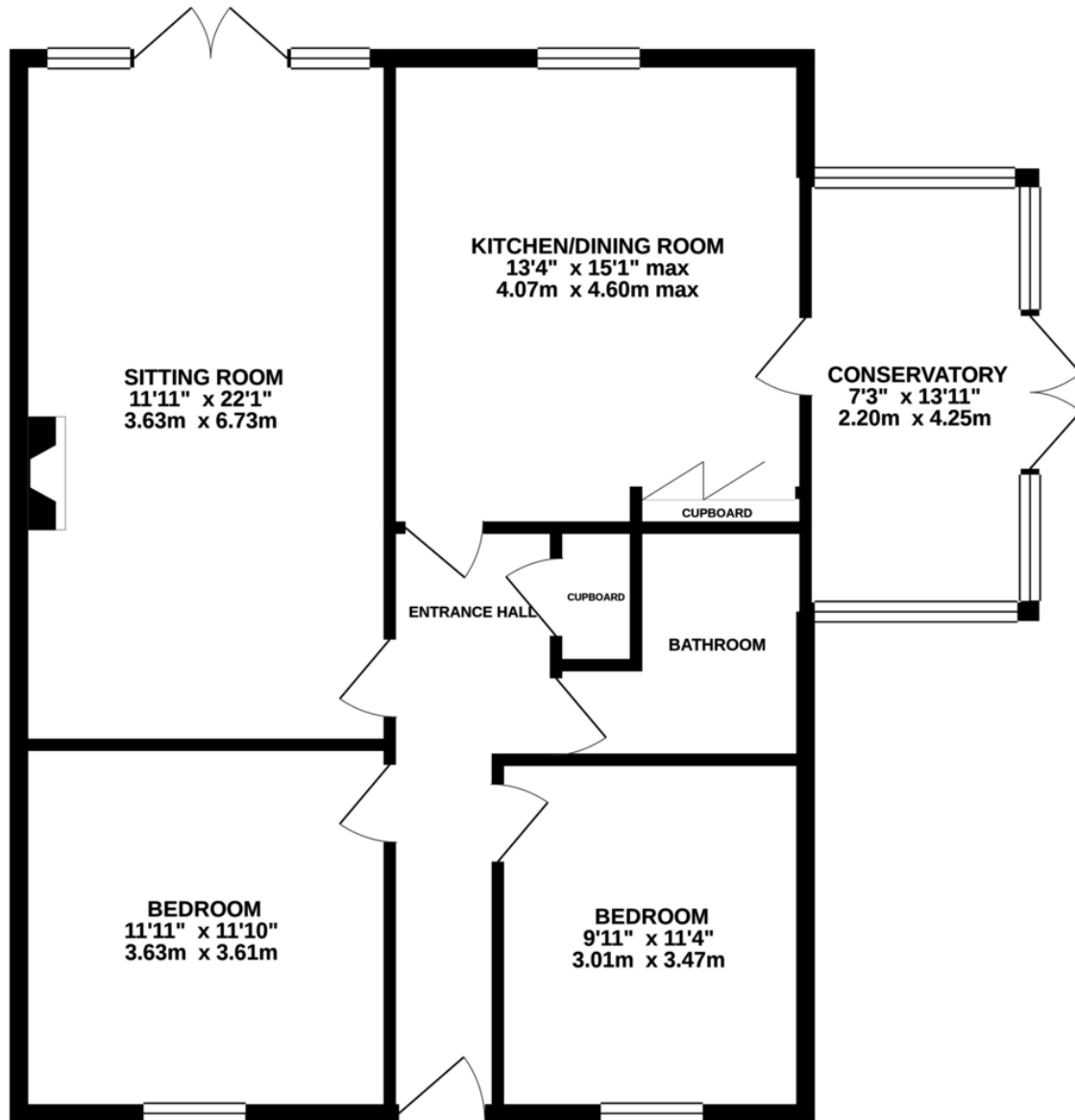
## PROPERTY SUMMARY

### EXTENDED BUNGALOW ON A GENEROUS PLOT...

This semi detached bungalow has been in the same ownership for 34 years and has a pitched roof extension to the rear, which runs across the whole width. The accommodation consists of a 22'1" sitting room, 15'1" max kitchen/dining room, 13'11" conservatory, two double bedrooms and a bathroom. The property is set on a generous plot with numerous sheds, a timber garage/workshop, a driveway which provides ample off road parking, UPVC double glazing, gas central heating and a lovely mature garden.



## GROUND FLOOR



Whilst every attempt has been made to ensure the accuracy of the floorplan contained here, measurements of doors, windows, rooms and any other items are approximate and no responsibility is taken for any error, omission or mis-statement. This plan is for illustrative purposes only and should be used as such by any prospective purchaser. The services, systems and appliances shown have not been tested and no guarantee as to their operability or efficiency can be given.  
Made with Metropix ©2021





Notes on Sale: These particulars are believed to be accurate, but no guarantee of their accuracy can be made. These particulars do not form part of any contract.



**01603 756898**

65 Grove Road, Norwich, NR1 3RL  
[contact@realityestateagents.co.uk](mailto:contact@realityestateagents.co.uk)