



Anchor Quay

Norwich

NR3 3PR

- WALKING DISTANCE OF CITY CENTRE
- PRIVATE MOORING
- EXCLUSIVE DEVELOPMENT
- NO ONWARD CHAIN

Guide Price £430,000


reality





PROPERTY SUMMARY

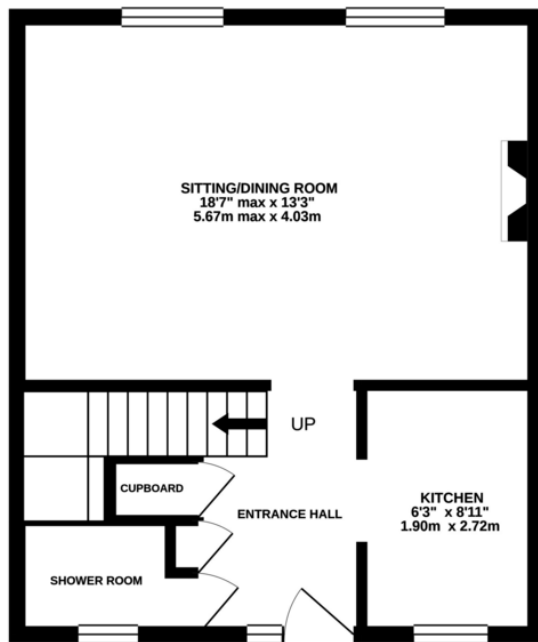
PRIVATE RIVER MOORING...

Located only a short walk from the city centre, within an exclusive development, this character property, is one not to be missed. It sits proudly alongside the River Wensum and comes with its own private mooring. This semi detached, two storey home, boasts bespoke aluminium sash windows, gas central heating, parking and a nice sized courtyard style garden. The accommodation consists of a ground floor shower room, re-fitted kitchen, sitting/dining room, three bedrooms (all with fitted wardrobes) and a upstairs bathroom.

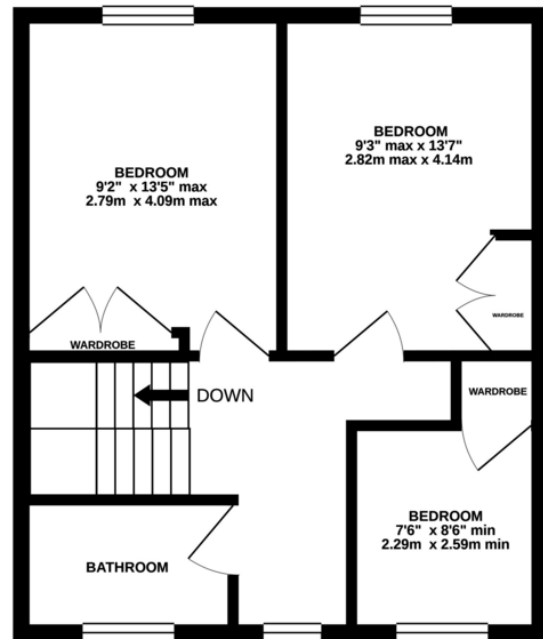
NO ONWARD CHAIN.



GROUND FLOOR

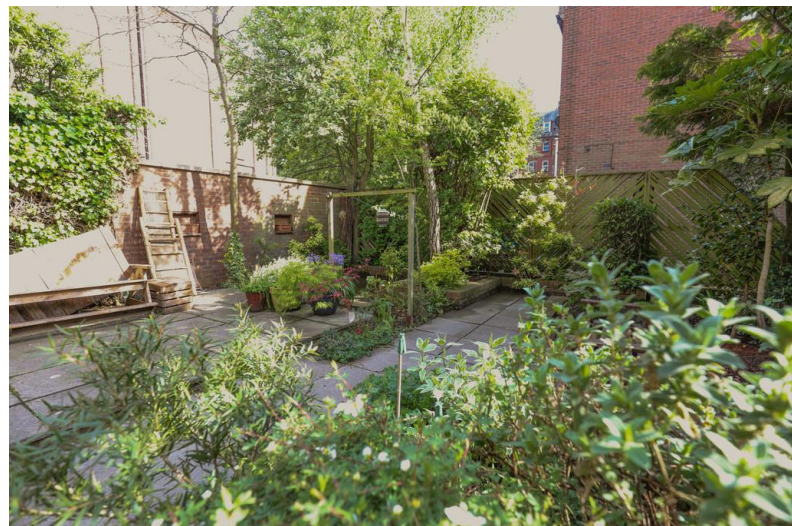


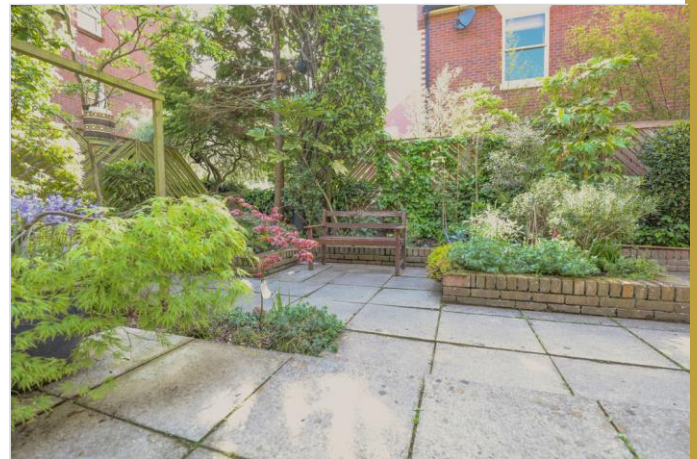
1ST FLOOR



Whilst every attempt has been made to ensure the accuracy of the floorplan contained here, measurements of doors, windows, rooms and any other items are approximate and no responsibility is taken for any error, omission or mis-statement. This plan is for illustrative purposes only and should be used as such by any prospective purchaser. The services, systems and appliances shown have not been tested and no guarantee as to their operability or efficiency can be given.

Made with Metropix ©2021





Notes on Sale: These particulars are believed to be accurate, but no guarantee of their accuracy can be made. These particulars do not form part of any contract.



01603 756898

65 Grove Road, Norwich, NR1 3RL
contact@realityestateagents.co.uk