

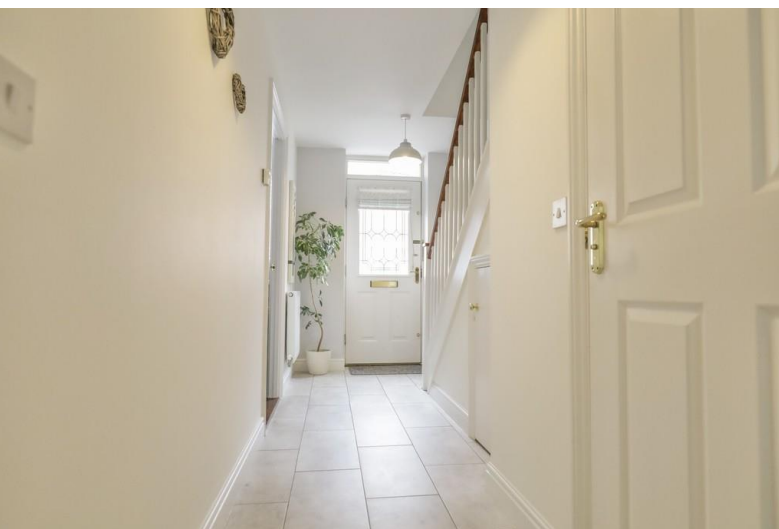


**Burroughs Way
Wymondham
NR18 0WE**

Guide Price £300,000 - £325,000

- Guide Price £300,000 - £325,000
- Extended Dining Area With Vaulted Ceiling
- Three Bedrooms - All With Fitted Wardrobes
- Bathroom & En-Suite Shower Room



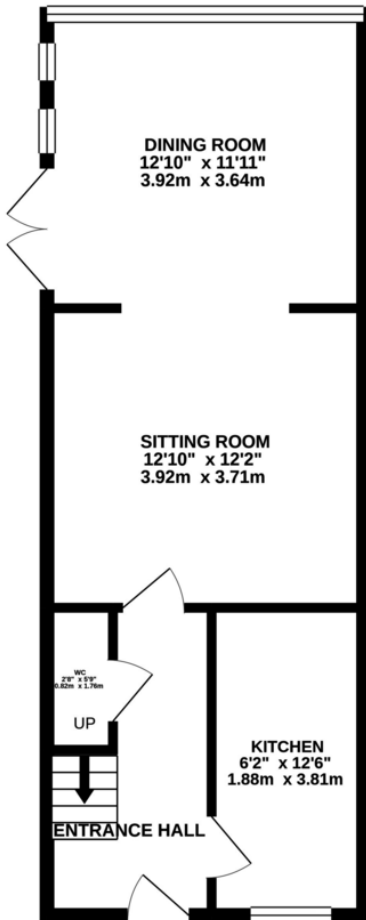


PROPERTY SUMMARY

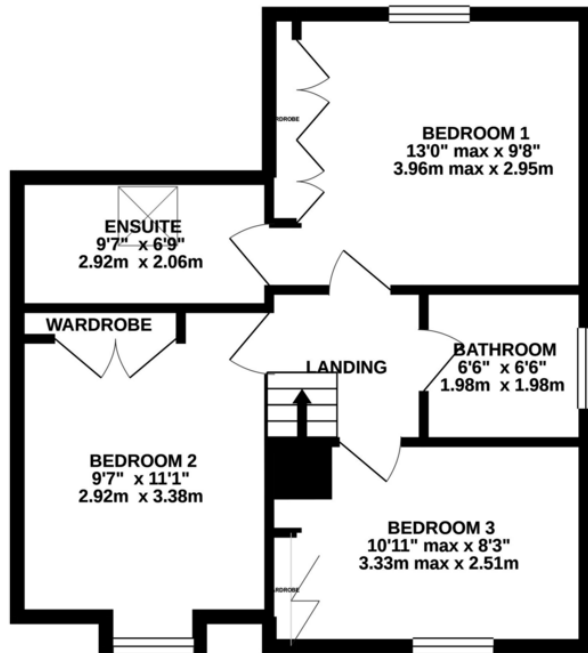
Located close to all amenities Wymondham has to offer, this house has been extended and now offers a beautiful family home. The accommodation comprises Entrance Hall, WC, fitted Kitchen with NEFF gas hob and electric cooker and space for washing machine and tumble dryer. The current owner has extended this home which now boasts Sitting Room open plan to the Dining Room with its Snug area, vaulted ceiling and floor to ceiling glazed gable. The first floor is equally as spacious and boasts Master Bedroom with fitted wardrobes and En-Suite, Bedroom 2 which is double in size and also offers fitted wardrobes. There is also the Third Bedroom and family Bathroom. To the rear the Garden is fully enclosed and offers an abundance of careful thought out plantings which create a great deal of privacy. The front offers off road parking and access to the Single Garage.



GROUND FLOOR



1ST FLOOR



Whilst every attempt has been made to ensure the accuracy of the floorplan contained here, measurements of doors, windows, rooms and any other items are approximate and no responsibility is taken for any error, omission or mis-statement. This plan is for illustrative purposes only and should be used as such by any prospective purchaser. The services, systems and appliances shown have not been tested and no guarantee as to their operability or efficiency can be given.
Made with Metropix ©2020



Notes on Sale: These particulars are believed to be accurate, but no guarantee of their accuracy can be made. These particulars do not form part of any contract.



01603 756898

65 Grove Road, Norwich, NR1 3RL
contact@realityestateagents.co.uk