



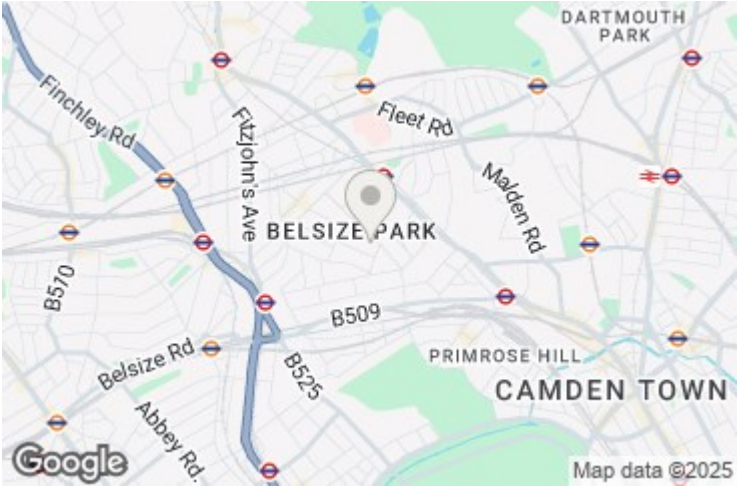
**Belsize Park Gardens, London NW3**

**£2,699 Per Month**

A bright and airy two double bedroom apartment located on the second floor of this magnificent stucco fronted house situated on this highly desirable Road in the heart of Belsize Park. The apartment consists of 2 even sized bedrooms both with an en suite bathrooms. The property is close to Belsize Park Tube (Northern Line) and Primrose Hill.

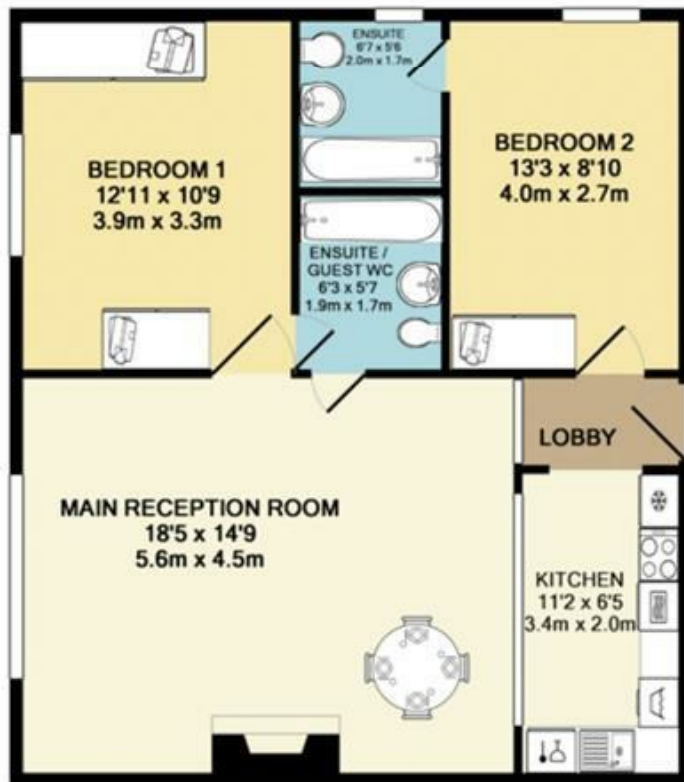
Available 10th May 2025, Furnished, EPC D, Council Tax

Belsize Park Gardens, London NW3



Energy Efficiency Rating		
	Current	Potential
Very energy efficient - lower running costs		
(92 plus) A		
(81-91) B		
(69-80) C		
(55-68) D		
(39-54) E		
(21-38) F		
(1-20) G		
Not energy efficient - higher running costs		
	68	
England & Wales	EU Directive 2002/91/EC	

Environmental Impact (CO <sub>2</sub> ) Rating		
	Current	Potential
Very environmentally friendly - lower CO2 emissions		
(92 plus) A		
(81-91) B		
(69-80) C		
(55-68) D		
(39-54) E		
(21-38) F		
(1-20) G		
Not environmentally friendly - higher CO2 emissions		
England & Wales	EU Directive 2002/91/EC	



BP5

Whilst every attempt has been made to ensure the accuracy of the floor plan contained here, measurements of doors, windows, rooms and any other items are approximate and no responsibility is taken for any error, omission, or mis-statement. This plan is for illustrative purposes only and should be used as such by any prospective purchaser. The services, systems and appliances shown have not been tested and no guarantee as to their operability or efficiency can be given  
Made with Metropix ©2011

## MAIDA VALE

75 Castellain Road  
Maida Vale

London W9 1EU

T 020 7266 5000

F 020 7266 1119

E w9@comptonreeback.co.uk

[comptonreeback.co.uk](http://comptonreeback.co.uk)

Est. 1995

Registered Name: Compton Reeback Limited Registration Number: 6880098  
Registered Office: 75 Castellain Road, Maida Vale, London W9 1EU

Directors: Brian Compton & Julian Reeback

IMPORTANT NOTICE: All of the information is intended only as a guide to a prospective purchaser and not constitute part of an offer or contract. Any measurements or distances referred to herein are approximate only. Any information contained herein (whether in the text, plans or photographs) is given in good faith but should not be relied upon as being a statement or representation of fact. Should you proceed with the purchase of the property, your solicitor must verify these details. We have not carried out a detailed survey nor tested the services, appliances and specific fittings. In accordance with current legislation we would advise you that the measurements on these particulars are imperial. The formula for conversion to metric is as follows: 1' (one foot) = 30.4cm (centimeters), 1m (one meter) = 3.29'(feet)