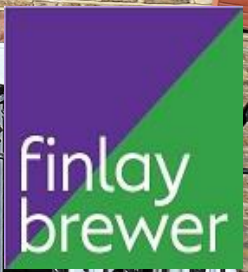




Caithness Road W14



Caithness Road W14

4 BEDROOMS
DOUBLE RECEPTION
KITCHEN / BREAKFAST / FAMILY ROOM
UTILITY ROOM
2 BATHROOMS
STUDY / BEDROOM 4
PAVED & WALLED GARDEN
BALCONY
EPC RATING D 59
COUNCIL TAX BAND G

A handsome 4 bedroom 2 bathroom Victorian house with 2 floors of flexible living/entertaining space and a delightful westerly garden. The lower ground floor has been opened up from front to back to create a kitchen to the front and dining/family area with French doors and windows onto the paved garden with raised flower beds to the rear. There is also a guest cloakroom, utility and understairs and vault storage. The raised ground floor is also opened up from front to back and has 2 fireplaces, wood floor and ample dwarf cupboards with shelving above. There are also French doors and windows which open onto a small balcony which in turn has stairs down to the garden. There are 4 bedrooms on the upper floors including the principal bedroom suite on the top floor. This charming house has a lovely light and airy feel and is situated on one of the premier roads in Brook Green.

PRICE GUIDE £2,000,000
FREEHOLD
SUBJECT TO CONTRACT





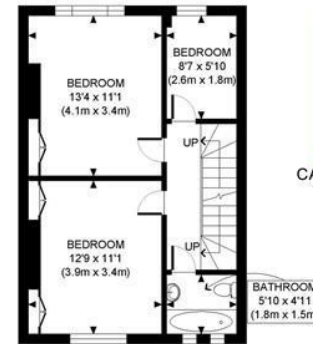




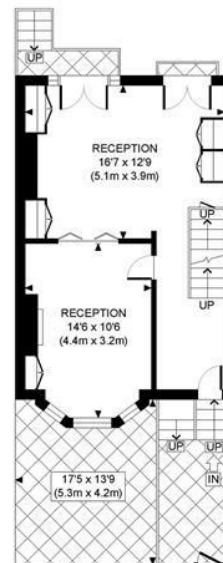
CAITHNESS ROAD, W14



SECOND FLOOR
GROSS INTERNAL
FLOOR AREA 334 SQ FT



FIRST FLOOR
GROSS INTERNAL
FLOOR AREA 459 SQ FT



RAISED GROUND FLOOR
GROSS INTERNAL
FLOOR AREA 435 SQ FT



LOWER GROUND FLOOR
GROSS INTERNAL
FLOOR AREA 495 SQ FT

APPROX. GROSS INTERNAL FLOOR AREA: 1723 SQ FT/ 160 SQM

PROPERTY PHOTO PLANS.CO.UK
ONE STOP SHOP FOR PROPERTY MARKETING

This plan is for illustrative purposes only and should be used as such by any prospective client. Whilst every attempt has been made to ensure the accuracy of the Floor Plan contained here, measurements of the doors, windows, rooms and any other items are approximate and no responsibility is taken for any errors, omissions, or misstatement. The services, systems and appliances shown have not been tested and no guarantee as to the operability or efficiency can be given.