



LAINSON STREET SW18



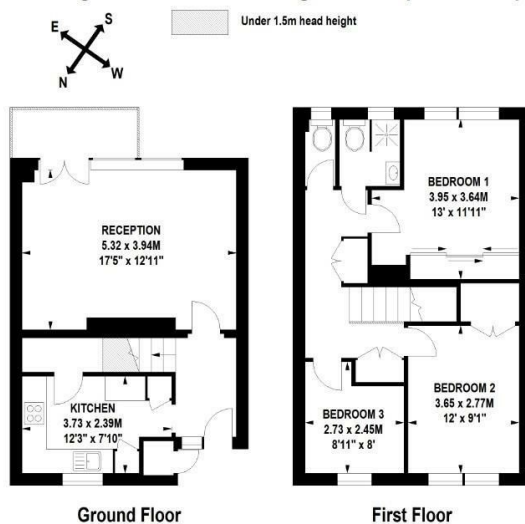


• 3 BEDROOM MAISONETTE • RECEPTION WITH SOLID WOOD FLOOR • SEPARATE CONTEMPORARY KITCHEN • SHOWER ROOM WITH SEPARATE WC • PRIVATE PATIO • COMMUNAL GARDEN • WIMBLEDON PARK ROAD AMENITIES • AVAILABLE NOW UNFURNISHED • SOUTHFIELDS STATION NEARBY • COUNCIL TAX BAND D

Fantastic three bedroom maisonette, with spacious reception, solid wood floor, private patio, separate contemporary kitchen with excellent storage and breakfast bar, shower room, separate WC, and access to a communal garden.

The property is located within 10 minutes' walk to Southfields Underground Station (District Line). There is a great selection of amenities on Wimbledon Park Road and a number of local green spaces nearby, to include King Georges Park and Wimbledon Park. Available now, unfurnished. Council Tax band D.

Lainson Street, SW18
Approximate Gross Internal Area 85 sq m / 915 sq ft
(Including Restricted Head Height of 1 sq m / 11 sq ft)



Floor Plan produced for Finlay Brewer by Mays Floorplans © . Tel 020 3397 4594
Illustration for identification purposes only, not to scale
All measurements are maximum, and include wardrobes and window bays where applicable
This Floorplan has been prepared in accordance with the current edition of the RICS code of measuring practice.

138 Shepherds Bush Road, London, W6 7PB
Tel: 020 7371 4071 lettings@finlaybrewer.co.uk