



LAINSON STREET SW18





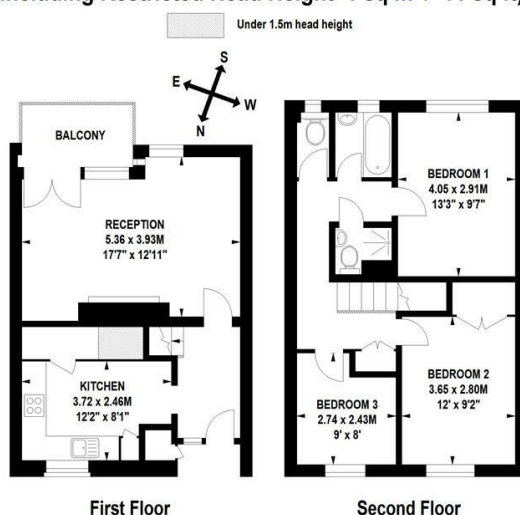
• 3 BEDROOM MAISONETTE • RECEPTION WITH WOOD FLOORING • SEPARATE CONTEMPORARY KITCHEN • SHOWER ROOM WITH SEPARATE WC • PRIVATE BALCONY • COMMUNAL GARDEN • FURNISHED • AVAILABLE JULY 25TH • CLOSE TO SOUTHFIELDS TUBE STATION (DISTRICT LINE) • COUNCIL TAX BAND D

Fantastic 3 bedroom maisonette, finished to a good standard, with spacious reception with wood flooring, private balcony, separate contemporary kitchen with excellent storage and breakfast bar, shower room, separate WC, and access to a communal garden.

The property is located within 10 minutes' walk to Southfields Underground Station (District Line). There is a great selection of amenities on Wimbledon Park Road and a number of local green spaces nearby, to include King Georges Park and Wimbledon Park.

Offered furnished and available from July 25th. Council Tax band D.

Lainson Street, SW18
Approximate Gross Internal Area 84 sq m / 904 sq ft
(Including Restricted Head Height 1 sq m / 11 sq ft)



Floor Plan produced for Finlay Brewer by Mays Floorplans © . Tel 020 3397 4594
Illustration for identification purposes only, not to scale
All measurements are maximum, and include wardrobes and window bays where applicable
This Floorplan has been prepared in accordance with the current edition of the RICS code of measuring practice.

138 Shepherds Bush Road, London, W6 7PB
Tel: 020 7371 4071 lettings@finlaybrewer.co.uk