



Poplar Grove W6



5 BEDROOMS (3 EN-SUITE)
STUNNING KITCHEN / BREAKFAST ROOM
4 BATHROOMS & SEPARATE WC
WOOD FLOORS
BASEMENT UTILITY AREA
PRIVATE PAVED GARDEN
UNFURNISHED
AVAILABLE 1ST AUGUST, UNFURNISHED
WELL PLACED FOR TUBE STATIONS AT
HAMMERSMITH AND SHEPHERDS BUSH
COUNCIL TAX BAND G



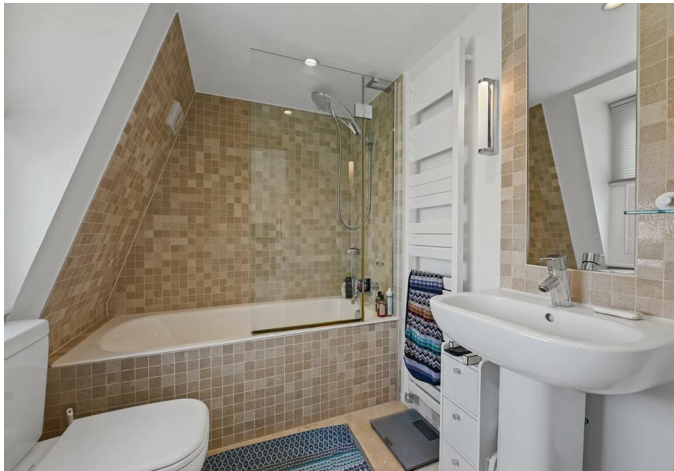
This substantial and big boned family home comprises of 4 floors of internal accommodation. With 5 generous double bedrooms (3 en-suite), an attractive reception room to the front, separate large kitchen / breakfast room with an island and plenty of built in storage, and a private, paved rear garden. In addition, the property further benefits from a basement utility area, an additional family bathroom on the 1st floor and a downstairs WC. There are wood floors to the ground floor and carpets throughout the upper floors. The fifth bedroom set on the top floor further benefits from a Juliet balcony and full-width eaves storage space. There is a wealth of period charm throughout this property and it would be an excellent base for a growing family.

Poplar Grove benefits from a fantastic location close to a number of local transport connections, with Hammersmith, Shepherds Bush and Goldhawk Road stations all within a 10-15 minute walk. The Olympia development is just a stone's throw away and will bring in a wealth of incredible amenities once it opens later on this year. Available from the 1st of August, unfurnished. Council Tax band G.

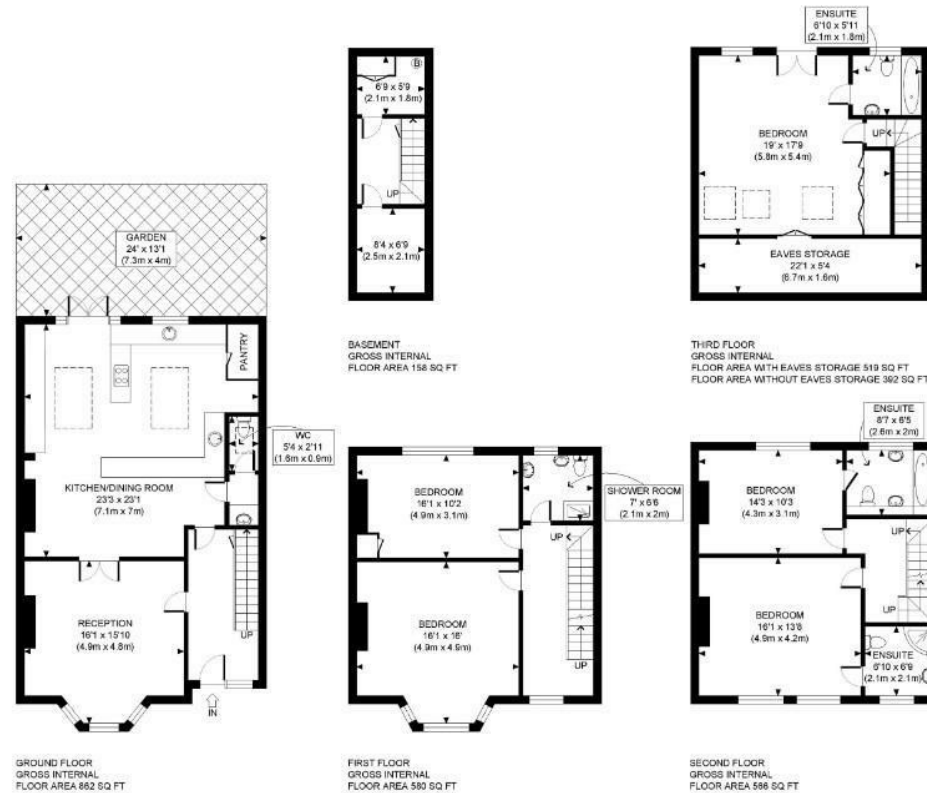
£1,719 PER WEEK

SUBJECT TO CONTRACT









APPROX. GROSS INTERNAL FLOOR AREA WITH EAVES STORAGE: 2585 SQ FT/ 246 SQM
APPROX. GROSS INTERNAL FLOOR AREA WITHOUT EAVES STORAGE: 2558 SQ FT/ 238 SQM

PROPERTY PHOTO PLANS.CO.UK
ONE STOP SHOP FOR PROPERTY MARKETING

This plan is for illustrative purposes only and should be used as such by any prospective client. Whilst every attempt has been made to ensure the accuracy of the Floor Plan contained here, measurements of the doors, windows, rooms and any other items are approximate and no responsibility is taken for any errors, omissions, or misstatement. The services, systems and appliances shown have not been tested and no guarantee as to the operability or efficiency can be given.