



Hammersmith
Grove W6



Hammersmith Grove W6

TERRACED FAMILY HOME

FOUR / FIVE BEDROOMS

TWO RECEPTION ROOMS

TWO BATHROOMS AND WC

UTILITY ROOM AND STUDY

PRIVATE MATURE GARDEN

BRIGHT AND SPACIOUS THROUGHOUT

COUNCIL TAX BAND H

AVAILABLE 6TH AUGUST

**SHORT WALK TO HAMMERSMITH AMENITIES AND TRANSPORT
LINKS**

UNDER OFFER

Stunning terraced family home arranged over four floors and boasting excellent living space with two reception rooms, four/five bedrooms and two bathrooms. There is also a fantastic 80 foot westerly garden and off street parking for one car. The lower ground floor comprises of a characterful kitchen / diner which is open from front to back and provides direct access to the mature private garden. There is also a utility and cloakroom on this floor. The ground floor has an exceptional double reception (measures 28'3 x 13'7) which is flooded with light and features French doors leading onto the balcony overlooking the front garden. Additionally, there is a study to the back which can be used as the fifth bedroom. There are four bedrooms and two bathrooms on the upper floors, including the principal bedroom on the first floor with an adjacent dressing room. Located a few minutes' walk from the transport links at Hammersmith and the many amenities of Kings Street. Available 6th August, unfurnished.

£1,500 PER WEEK

SUBJECT TO CONTRACT

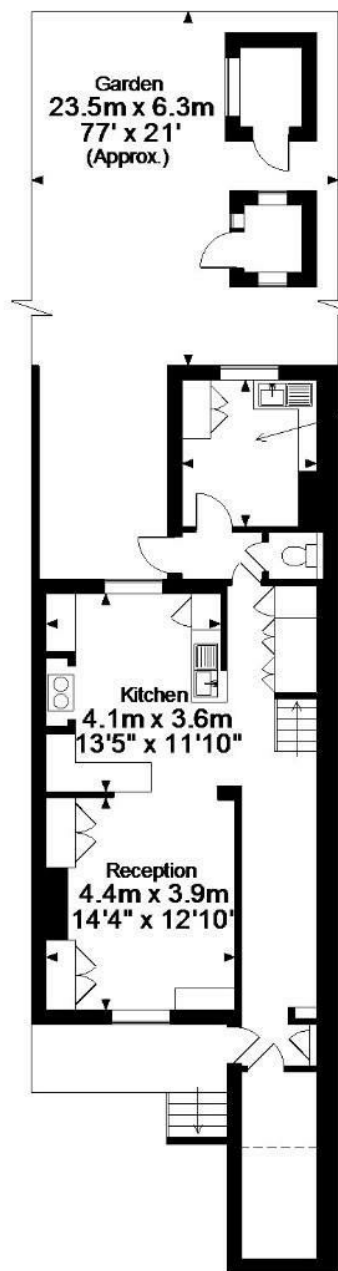




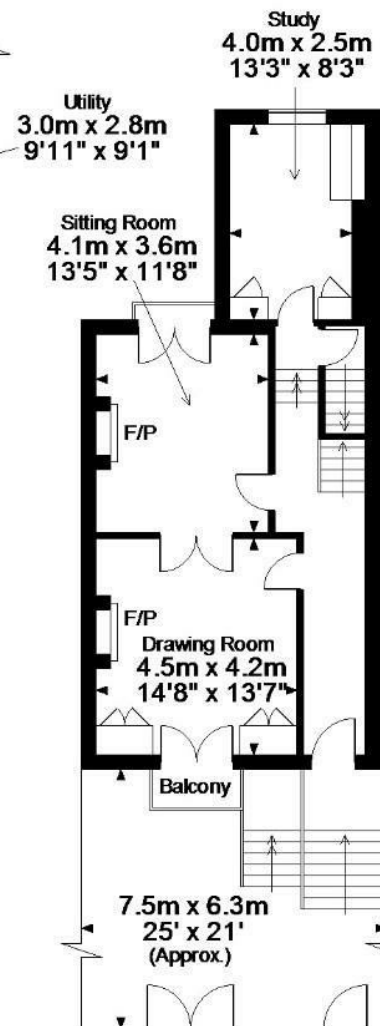






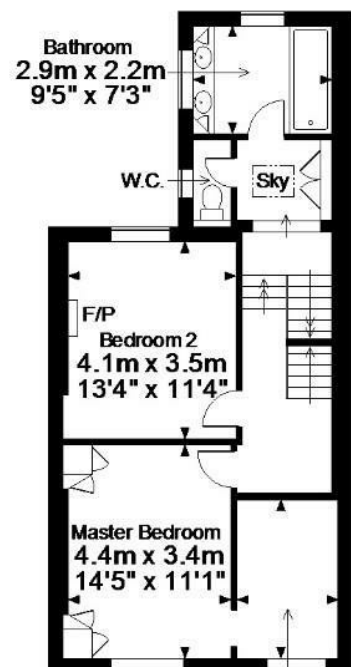
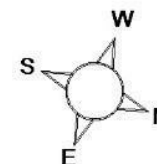


Lower Ground Floor



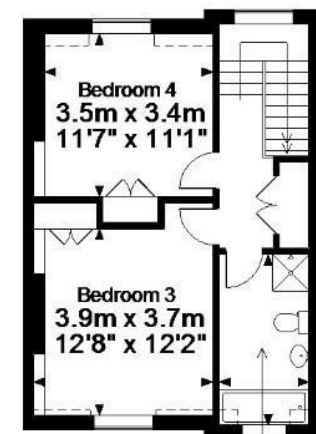
Ground Floor

Hammersmith Grove, W6
Approximate Gross Internal Area
2461 Sq Ft/228 Sq M
Restricted Head Height = 48 Sq Ft/4 Sq M
External Rooms = 41 Sq Ft/4 Sq M
Total = 2550 Sq Ft/236 Sq M



First Floor

Dressing Room
3.3m x 2.1m
10'9" x 6'10"



Second Floor

FOR ILLUSTRATIVE PURPOSES ONLY - NOT TO SCALE

The position & size of doors, windows, appliances and other features are approximate only.

□ □ □ □ Denotes restricted head height

© ehouse. Unauthorised reproduction prohibited. Drawing ref. dig/8183953/JBN