



**Beaconsfield  
Terrace Road W14**



# Beaconsfield Terrace

**SPACIOUS SECOND FLOOR FLAT**

**ONE DOUBLE BEDROOM**

**LARGE RECEPTION ROOM**

**SEPARATE FULLY FITTED KITCHEN**

**TILED BATHROOM**

**MOMENTS FROM KENSINGTON OLYMPIA**

**DISTRICT LINE AND OVERGROUND SECONDS  
AWAY**

**FURNISHED**

**AVAILABLE NOW**

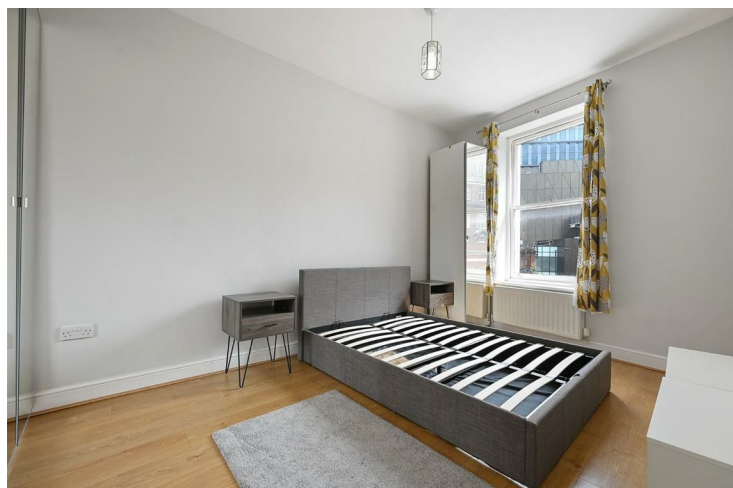
**COUNCIL TAX BAND D**

Spacious and bright one bedroom apartment located on the second floor of an imposing period building. The apartment comprises a spacious double bedroom, a bright reception room, separate fully fitted kitchen with a dishwasher and a tiled bathroom. The flat is in excellent decorative order and benefits from wood floors throughout.

Excellent location, moments away from the new Olympia Development and Kensington Olympia station, with access to District Line and London Overground. There is a great selection of amenities on Kensington High Street and Hammersmith Broadway. Available now, furnished. Council Tax band D.

**£450 PER WEEK**

**SUBJECT TO CONTRACT**



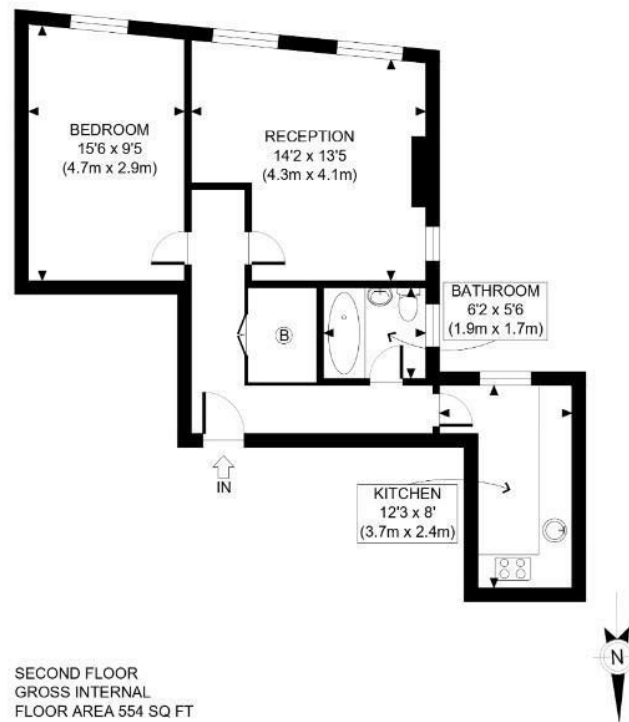








BEACONSFIELD TERRACE ROAD, W14



SECOND FLOOR  
GROSS INTERNAL  
FLOOR AREA 554 SQ FT

APPROX. GROSS INTERNAL FLOOR AREA: 554 SQ FT/ 51 SQM

**PROPERTY PHOTO PLANS** CO.UK  
ONE STOP SHOP FOR PROPERTY MARKETING

This plan is for illustrative purposes only and should be used as such by any prospective client. Whilst every attempt has been made to ensure the accuracy of the Floor Plan contained here, measurements of the doors, windows, rooms and any other items are approximate and no responsibility is taken for any errors, omissions, or misstatement. The services, systems and appliances shown have not been tested and no guarantee as to the operability or efficiency can be given.