



## HAMMERSMITH GROVE W6





• ONE BEDROOM • BILLS INCLUDED IN RENT (NOT COUNCIL TAX) • WOODEN FLOORS • CONTEMPORARY FITTED KITCHEN • STYLISH BATHROOM • GREAT STORAGE • CLOSE TO TRANSPORT • FURNISHED • AVAILABLE 29TH JULY • COUNCIL TAX BAND E

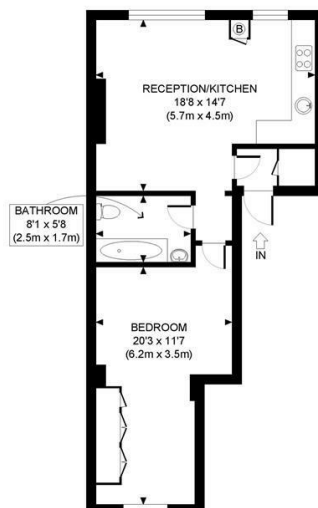
\*LET AGREED\*

\*Rent includes electricity, gas and water rates\*

Fantastic 1 bedroom flat, with wooden floors throughout, open plan reception, contemporary fitted kitchen, large bathroom and excellent storage. Located on the second floor of a Victorian conversion, recently refurbished, and a short walk from the transport links at Shepherd's Bush and Hammersmith. Furnished, available July 29th. Council Tax band E.

**FINLAY  
BREWER**

HAMMERSMITH GROVE, W6



SECOND FLOOR  
GROSS INTERNAL  
FLOOR AREA 544 SQ FT

APPROX. GROSS INTERNAL FLOOR AREA: 544 SQ FT/ 51 SQM

**PROPERTY PHOTO PLANS**  
ONE STOP SHOP FOR PROPERTIES MARKETING

Whilst every attempt has been made to ensure the accuracy of the floor plan contained here, measurements of the doors, windows, rooms and any other items are approximate and no responsibility is taken for any errors, omissions, or mis-statement. This plan is for illustrative purposes only and should be used as such by any prospective client. The services, systems and appliances shown have not been tested and no guarantee as to the operability or efficiency can be given.

138 Shepherd's Bush Road, London, W6 7PB  
Tel: 020 7371 4071 [lettings@finlaybrewer.co.uk](mailto:lettings@finlaybrewer.co.uk)