



Batoum Gardens
W6



Batoum Gardens W6

4 BEDROOMS

WOOD FLOORING

OPEN PLAN RECEPTION

FITTED KITCHEN

SHOWER ROOM AND ENSUITE BATHROOM

**QUIET LOCATION WITH GREAT LOCAL
AMENITIES**

SHORT WALK TO A NUMBER OF TUBE STATIONS

AVAILABLE JUNE 30TH, UNFURNISHED

COUNCIL TAX BAND E

**THE PROPERTY IS NOT SUITABLE FOR SHARERS
OR STUDENTS**

Fantastic 4 bedroom maisonette, with wood flooring throughout, bright open plan reception, fitted kitchen, shower room and en-suite bathroom. Located in a quiet residential street, close to the shops and amenities of Shepherds Bush Road and a short walk to the transport links at Hammersmith and Shepherds Bush. Due to licensing this property is not suitable for sharers. Available unfurnished from June 30th. Council Tax band E.

£784 PER WEEK

SUBJECT TO CONTRACT



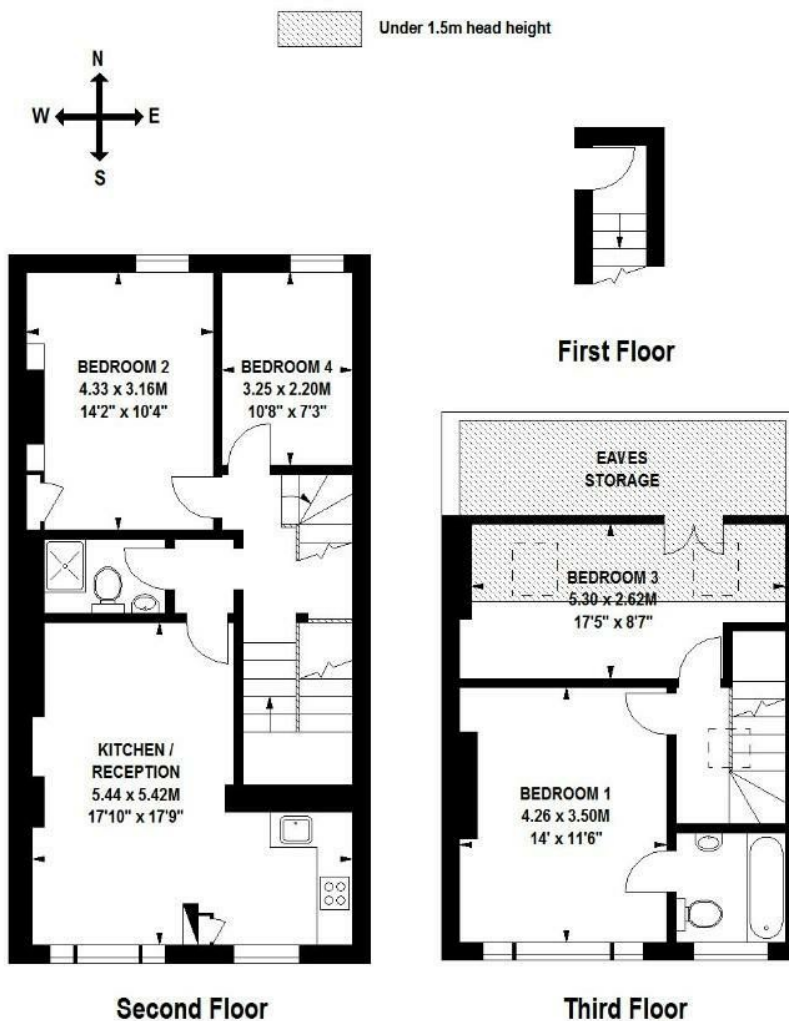






Batoum Gardens, W6

Approximate Gross Internal Area 112 sq m / 1905 sq ft
Including Eaves Storage of 9 sq m / 97 sq ft



Floor Plan produced for Finlay Brewer by Mays Floorplans © . Tel 020 3397 4594
Illustration for identification purposes only, not to scale
All measurements are maximum, and include wardrobes and window bays where applicable
This Floorplan has been prepared in accordance with the current edition of the RICS code of measuring practice.