



Faroe Road W14



Faroe Road W14

5 BEDROOMS

DOUBLE RECEPTION

KITCHEN/BREAKFAST ROOM

3 BATHROOMS (2 EN SUITE)

MEDIA/PLAYROOM/BEDROOM 5

GUEST CLOAKROOM

**WESTERLY WALLED GARDEN &
BALCONY**

EPC RATING C 69

COUNCIL TAX BAND G

A substantial 4/5 bedroom Victorian terraced house over 4 floors with good living/entertaining space over 2 floors and a lovely walled westerly garden. There is an extended double reception on the raised ground floor accessed via double French doors from the entrance hall. There is a sash window to the front, a feature fireplace with dwarf cupboards and shelving beside. The rear of this room has been extended to create an L-shaped study area with French doors and window to a balcony which overlooks the garden below. The natural lower ground floor with its own entrance has a double bedroom/media/playroom to the front and an en suite shower room. The kitchen/breakfast room is to the rear and has built-in banquette seating and French doors and window to the walled westerly garden which is initially paved and then set to 'London lawn'. There is also a guest cloakroom and understairs storage on this floor. There are 4 bedrooms, a family bathroom and en suite shower room on the upper floors. This well-configured and generously proportioned property of approximately 2000 sq ft occupies an excellent position on Faroe Road and offers the potential to upgrade to one's own taste and style.

PRICE GUIDE £2,250,000

FREEHOLD

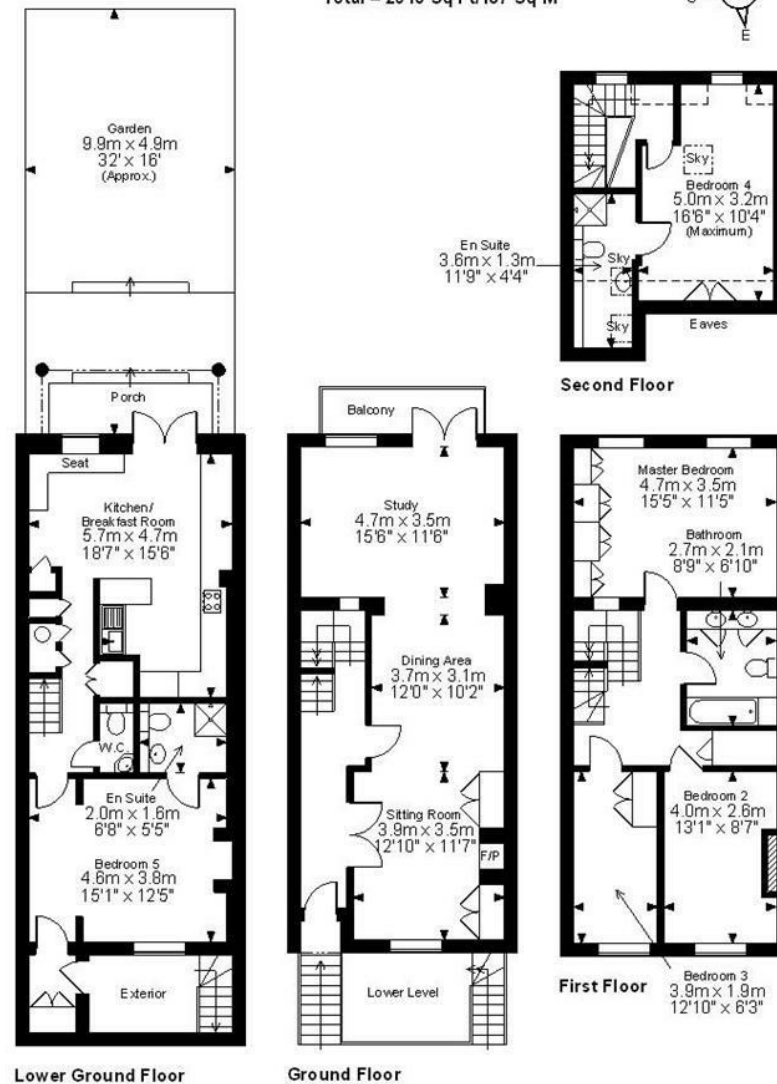
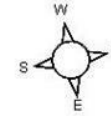
SUBJECT TO CONTRACT







Faroe Road, W14
 Approximate Gross Internal Area
 1961 Sq Ft/182 Sq M
 Restricted Head Height = 54 Sq Ft/5 Sq M
 Total = 2015 Sq Ft/187 Sq M



FOR ILLUSTRATIVE PURPOSES ONLY - NOT TO SCALE

The position & size of doors, windows, appliances and other features are approximate only.

□ □ □ Denotes restricted head height

© ehouse. Unauthorised reproduction prohibited. Drawing ref. dig/8172665/NJD