



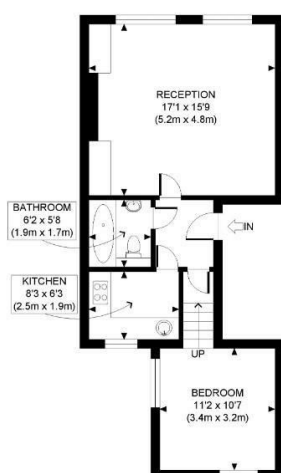
BLYTHE ROAD W14





• **FIRST FLOOR FLAT • ONE DOUBLE BEDROOM • SPACIOUS AND BRIGHT LIVING ROOM • SEPARATE MODERN FITTED KITCHEN • GOOD ORDER THROUGHOUT • SHORT WALK TO KENSINGTON OLYMPIA • GREAT LOCAL CAFES, RESTAURANTS AND FARMER'S MARKET • HAMMERSMITH AND SHEPHERDS BUSH TUBE STATIONS NEARBY • AVAILABLE JUNE 2ND, FURNISHED • COUNCIL TAX BAND B**

Charming one bedroom first floor flat comprising of a spacious living area full of light, a separate modern fitted kitchen, a good size double bedroom with built in storage and a tiled bathroom. Located on Blythe Road in the heart of Brook Green and well positioned for the Kensington Olympia development and the Overground station. There is a great selection of local amenities on your doorstep, to include independent coffee shops, restaurants, local gastro pubs, a Saturday farmer's market, municipal tennis courts on the green and three tube stations within a 10 minutes' walk (Hammersmith, Goldhawk Road and Shepherd's Bush). The flat is also just a short walk to Westfield White City. Available furnished from the 2nd of June. Council Tax band B.



FIRST FLOOR
GROSS INTERNAL
FLOOR AREA 543 SQ FT

APPROX. GROSS INTERNAL FLOOR AREA: 543 SQ FT/ 50 SQM

PROPERTY PHOTO PLANS.CO.UK
ONE STOP SHOP FOR PROPERTY MARKETING

This plan is for illustrative purposes only and should be used as such by any prospective client. Whilst every attempt has been made to ensure the accuracy of the Floor Plan contained here, measurements of the doors, windows, rooms and any other items are approximate and no responsibility is taken for any errors, omissions, or misstatement. The services, systems and appliances shown have not been tested and no guarantee as to the operability or efficiency can be given.

138 Shepherds Bush Road, London, W6 7PB
Tel: 020 7371 4071 lettings@finlaybrewer.co.uk