



Addison Gardens
W14

finlay
brewer

Addison Gardens W14

4 BEDROOM FAMILY HOME

WOODEN FLOORS THROUGHOUT

DOUBLE RECEPTION

**KITCHEN BREAKFAST ROOM WITH STYLISH
KITCHEN**

SEPARATE UTILITY AREA AND STORAGE SPACE

MASTER SUITE WITH ENSUITE SHOWER ROOM

**FAMILY BATHROOM, 2ND ENSUITE SHOWER
ROOM AND SEPARATE WC**

PRETTY GARDEN

UNFURNISHED

COUNCIL TAX BAND G

Stunning 4 bedroom family house, with wooden floors throughout, stylish double reception, beautiful kitchen/breakfast room, separate utility room with adjoining storage space, master suite with built in cupboards, ensuite shower room, family bathroom, 2nd ensuite shower room, separate WC and pretty private garden. Located in the heart of Brook Green, a short walk from Westfield London, Holland Park and close to the transport links at Hammersmith and Shepherds Bush. Available unfurnished. Council Tax band G.

SUBJECT TO CONTRACT



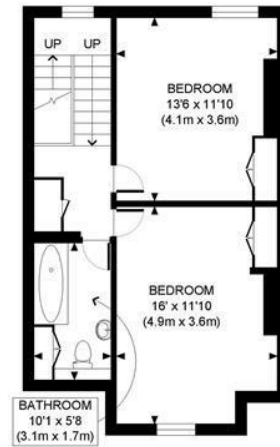




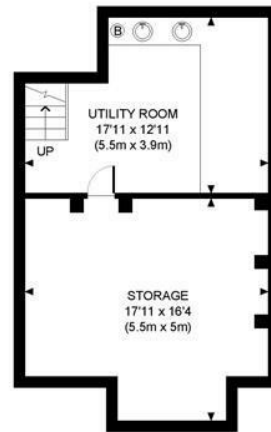




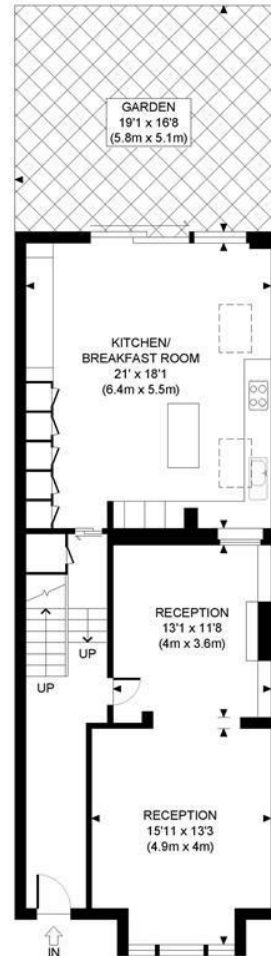
ADDISON GARDENS W14



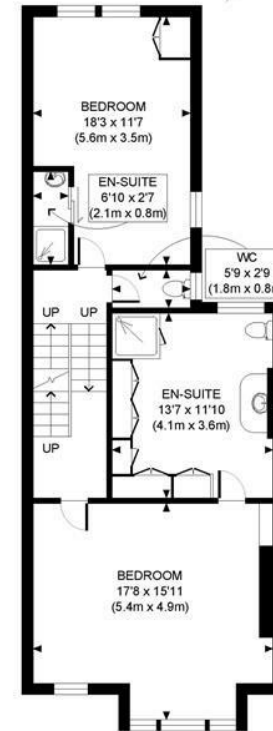
SECOND FLOOR
GROSS INTERNAL
FLOOR AREA 509 SQ FT



LOWER GROUND FLOOR
GROSS INTERNAL
FLOOR AREA 470 SQ FT



GROUND FLOOR
GROSS INTERNAL
FLOOR AREA 907 SQ FT



FIRST FLOOR
GROSS INTERNAL
FLOOR AREA 755 SQ FT

APPROX. GROSS INTERNAL FLOOR AREA: 2641 SQ FT/ 245 SQM

PROPERTY PHOTO PLANS.co.uk
ONE STOP SHOP FOR PROPERTY MARKETING

Whilst every attempt has been made to ensure the accuracy of the floor plan contained here, measurements of the doors, windows, rooms and any other items are approximate and no responsibility is taken for any errors, omissions, or miss-statement. This plan is for illustrative purposes only and should be used as such by any prospective client. The services, systems and appliances shown have not been tested and no guarantee as to the operability or efficiency can be given.