



Grove Park Gardens

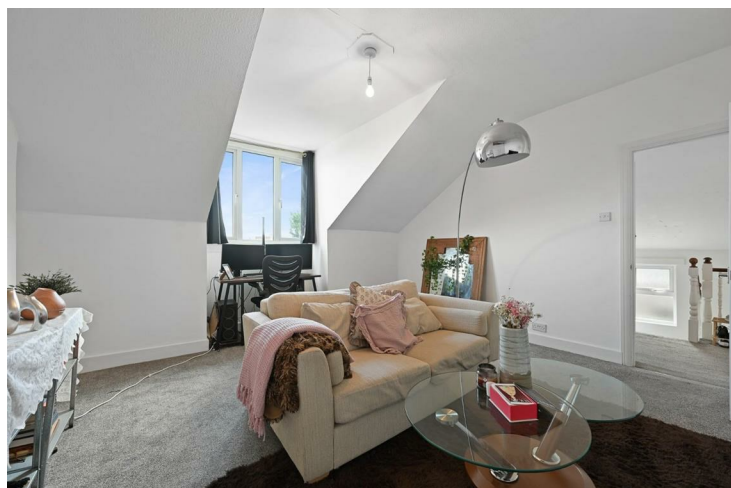
## Grove Park Gardens W4

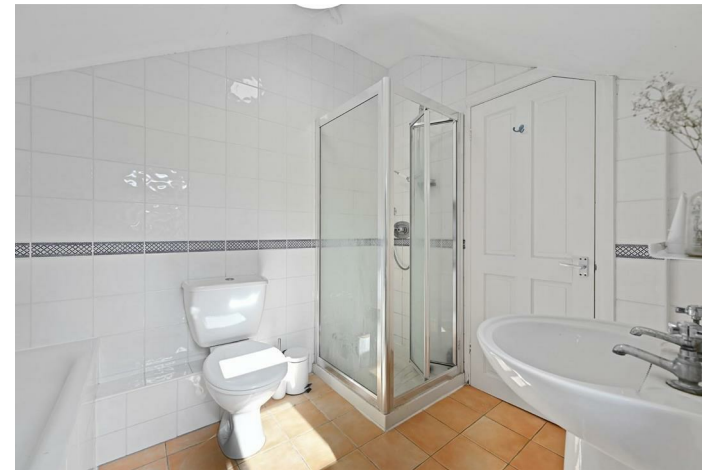
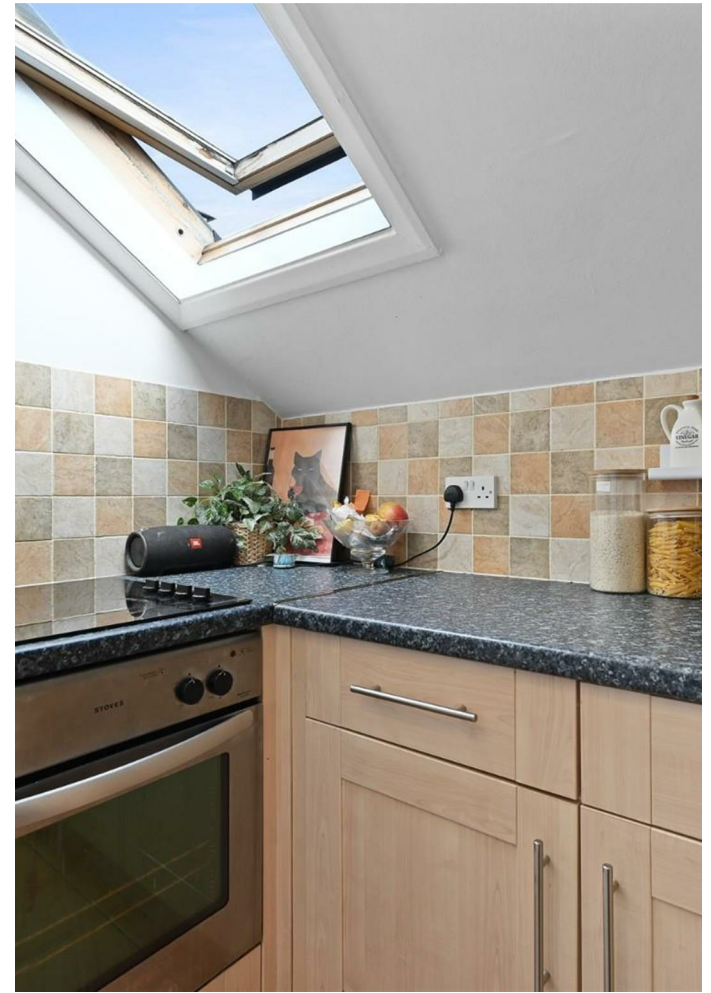
- 1 BEDROOM • OVER 700 SQUARE FEET • SPACIOUS RECEPTION • SEPARATE KITCHEN • BATHROOM WITH SEPARATE SHOWER • MOMENTS FROM THE RIVER • CHISWICK TRAIN STATION NEARBY • AVAILABLE APRIL 23RD • FURNISHED OR PART FURNISHED • COUNCIL TAX BAND C

Charming bright one bedroom flat on the top floor of a period conversion, located moments from the river, with a very spacious reception, separate fitted kitchen, and bathroom with a separate shower. Located on a quiet residential street and only a short walk to the shops and transport links at Chiswick. Available April 23rd, furnished/part furnished. Council Tax band C.

**£380 PER WEEK**

**SUBJECT TO CONTRACT**







GROVE PARK GARDENS, W4



**PROPERTY PHOTO PLANS**.CO.UK  
ONE STOP SHOP FOR PROPERTY MARKETING

This plan is for illustrative purposes only and should be used as such by any prospective client. Whilst every attempt has been made to ensure the accuracy of the Floor Plan contained here, measurements of the doors, windows, rooms and any other items are approximate and no responsibility is taken for any errors, omissions, or misstatement. The services, systems and appliances shown have not been tested and no guarantee as to the operability or efficiency can be given.