



Brackenbury Road W6

finlay
brewer

Brackenbury Road W6

3 BEDROOMS
OPEN PLAN
KITCHEN/BREAKFAST/RECEPTION
DOUBLE RECEPTION
BATHROOM
GUEST CLOAKROOM / UTILITY
PAVED & LAWNED GARDEN
EPC RATING D 57
COUNCIL TAX BAND G

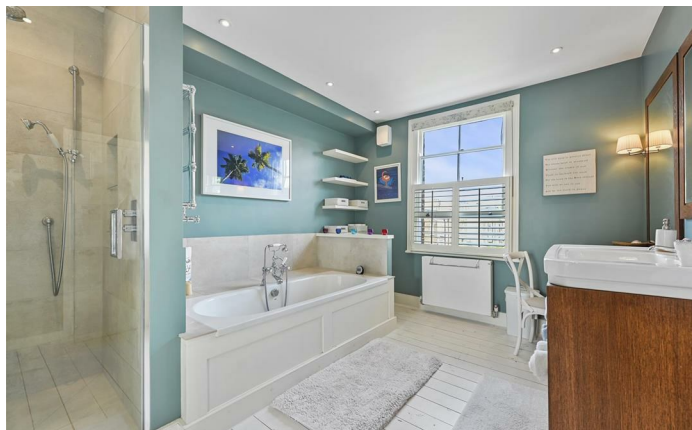
A truly wonderful 3 double bedroom Victorian terraced house with two floors of amazing living/entertaining space and a fabulous 42" walled garden. The lower ground floor has been opened up from front to back with the kitchen/breakfast room to the front and the extended dining/family room beyond. The dining/family area is open to the stairs and there are two sets of French doors which open onto the secluded garden. The elegant double reception occupies almost the entire raised ground floor and has a marble fireplace, stripped wood floor and shuttered bay windows to the front with a second sash overlooking the garden. There are 3 double bedrooms including the fantastic principal bedroom suite which occupies the entire first floor. This very generous and exciting house is flooded with light, oozes cool elegance and can be moved into without further expense.

PRICE GUIDE £1,895,000
FREEHOLD

SUBJECT TO CONTRACT

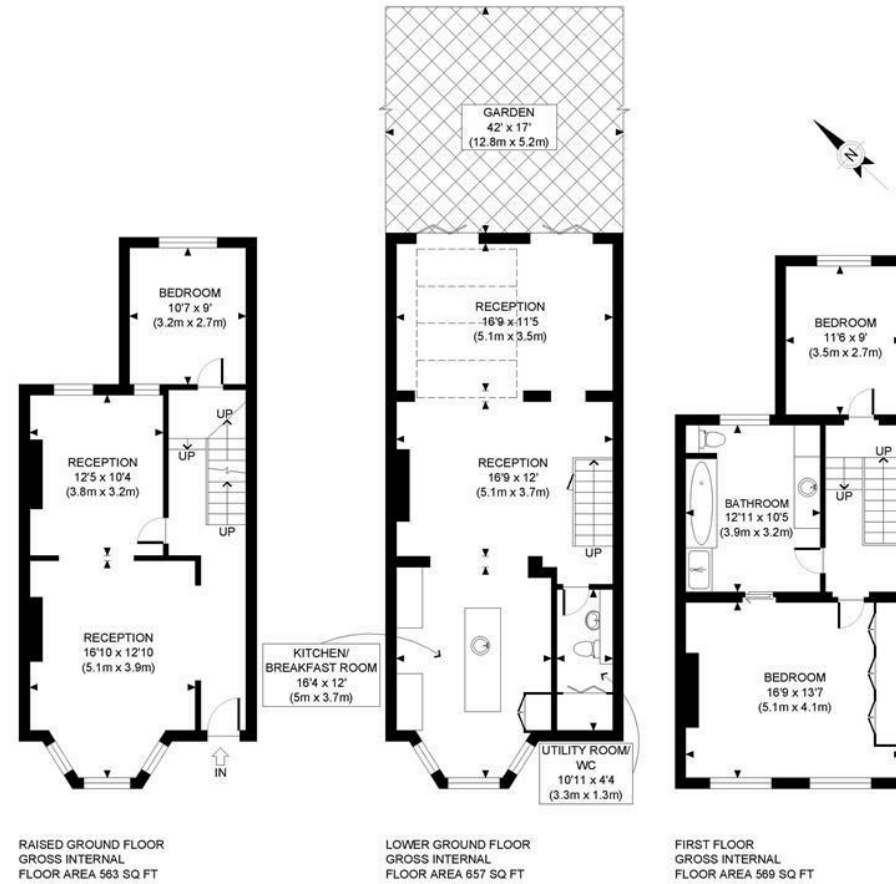








BRACKENBURY ROAD, W6



APPROX. GROSS INTERNAL FLOOR AREA: 1789 SQ FT/ 166 SQM

PROPERTY PHOTO PLANS CO.UK

ONE STOP SHOP FOR PROPERTY MARKETING

This plan is for illustrative purposes only and should be used as such by any prospective client. Whilst every attempt has been made to ensure the accuracy of the Floor Plan contained here, measurements of the doors, windows, rooms and any other items are approximate and no responsibility is taken for any errors, omissions, or misstatement. The services, systems and appliances shown have not been tested and no guarantee as to the operability or efficiency can be given.