



Bolingbroke Road W14



Bolingbroke Road W14

DOUBLE BEDROOM

DOUBLE RECEPTION

KITCHEN

SHOWER ROOM

EPC RATING C 72

COUNCIL TAX BAND D

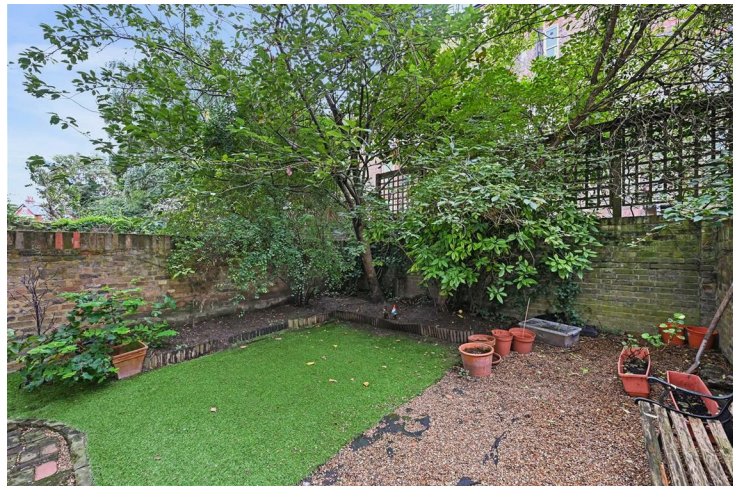
LEASE LENGTH: 953 YRS APX

BUILDING INSURANCE: £850 PA APX

A generous 1 bedroom lateral lower ground floor flat with fantastic living/entertaining space and a wonderful herringbone flooring throughout. The spacious bedroom to the front has a bay window and wall to wall built in wardrobes. The well equipped galley kitchen leads to the bathroom at the rear of the property. The generous double reception is beside and has a feature fireplace with dwarf cupboards either side and French doors open into the sunroom. The pretty walled garden has London lawn and an open aspect. This property of approximately 840 sq ft has potential to be upgraded and reconfigured to create a 2nd bedroom should one wish to do so.

PRICE GUIDE £600,000
SHARE OF FREEHOLD

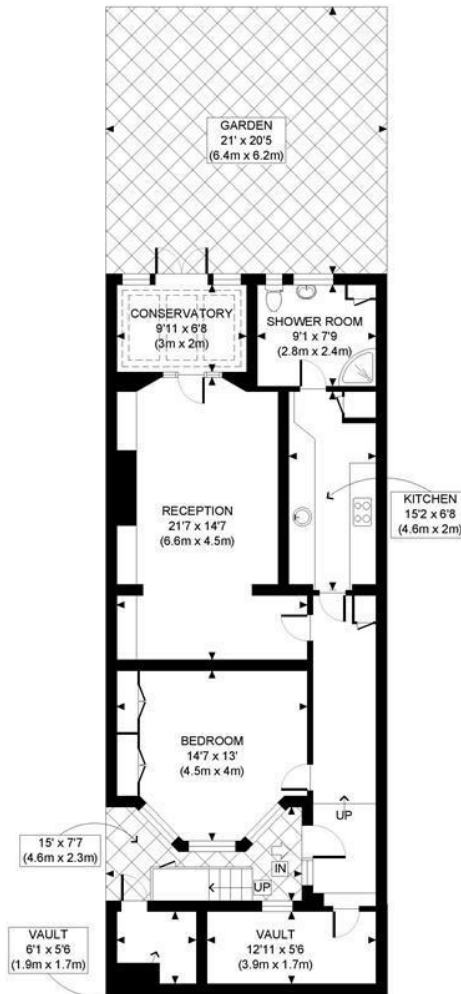
SUBJECT TO CONTRACT







BOLINGBROKE ROAD, W14



LOWER GROUND FLOOR
GROSS INTERNAL
FLOOR AREA WITH VAULT 953 SQ FT
FLOOR AREA WITHOUT VAULT 842 SQ FT



APPROX. GROSS INTERNAL FLOOR AREA WITH VAULT: 953 SQ FT/ 89 SQM
APPROX. GROSS INTERNAL FLOOR AREA WITHOUT VAULT: 842 SQ FT/ 78 SQM

PROPERTY PHOTO PLANS.CO.UK
ONE STOP SHOP FOR PROPERTY MARKETING

This plan is for illustrative purposes only and should be used as such by any prospective client. Whilst every attempt has been made to ensure the accuracy of the Floor Plan contained here, measurements of the doors, windows, rooms and any other items are approximate and no responsibility is taken for any errors, omissions, or misstatement. The services, systems and appliances shown have not been tested and no guarantee as to the operability or efficiency can be given.