



Masbro Road W14



Masbro Road W14

- 2/3 BEDROOM COTTAGE • WOODEN FLOORS • RECEPTION • KITCHEN BREAKFAST ROOM • DINING ROOM/THIRD BEDROOM • FAMILY BATHROOM • CLOSE TO SHOPS AND TRANSPORT • AVAILABLE 5TH DECEMBER • UNFURNISHED • COUNCIL TAX BAND F

Charming 2/3 bedroom cottage, with wooden floors, reception, dining room/third bedroom, kitchen breakfast room, family bathroom with separate shower and pretty private garden. Located in the heart of Brook Green, a short walk from the transport links at Hammersmith and Shepherds Bush, and close to the shops and amenities on Blythe Road. Available 5th December, unfurnished.



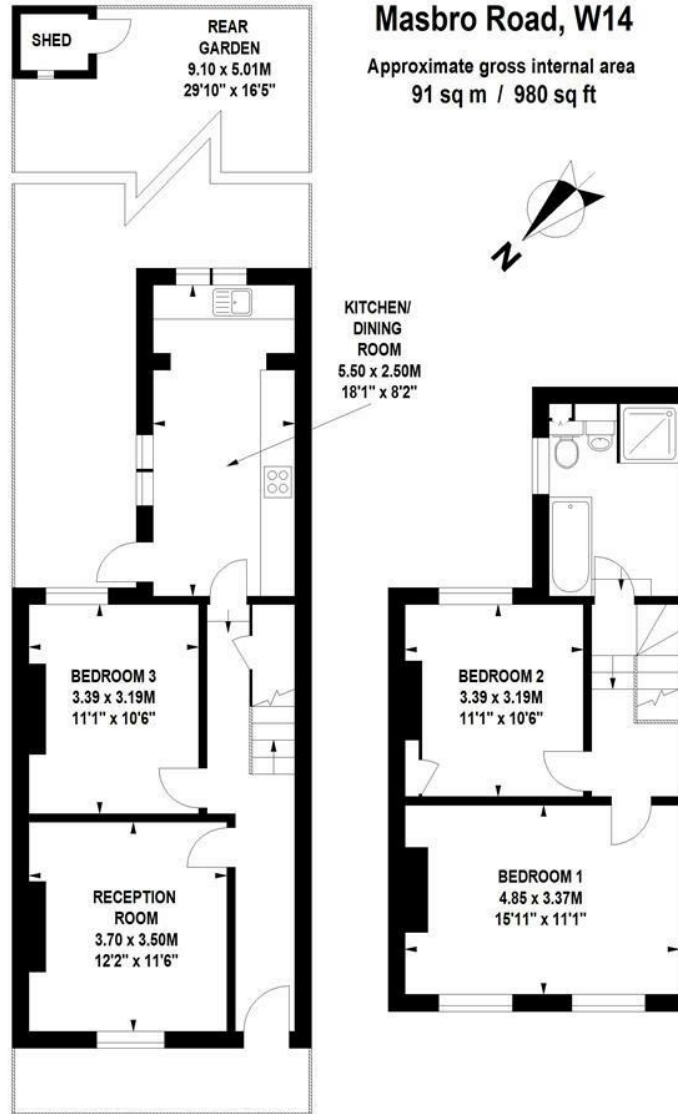
£761 PER WEEK

SUBJECT TO CONTRACT



Masbro Road, W14

Approximate gross internal area
91 sq m / 980 sq ft



Ground Floor

First Floor

Floor Plan produced for Finlay Brewer by Mays Floorplans © . Tel 020 3397 4594
Illustration for identification purposes only, not to scale
All measurements are maximum, and include wardrobes and window bays where applicable