



Barb Mews W6



Barb Mews W6

1 BEDROOM

WOODEN FLOOR

SPACIOUS RECEPTION

FITTED KITCHEN

SHOWER ROOM

FURNISHED

AVIALABLE 23RD OCTOBER

**CLOSE TO TRANSPORT AND LOCAL
AMENITIES**

COUNCIL TAX BAND C

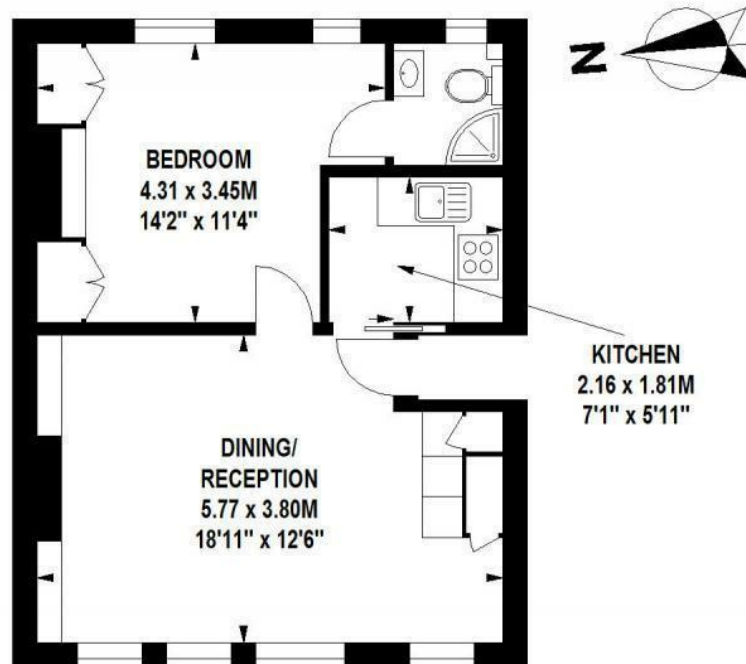
Excellent 1 bedroom flat, with wooden floors, fitted kitchen and contemporary shower room. Located in a quiet mews, close to the shops and amenities on Shepherds Bush Road and the transport links at Shepherds Bush and Hammersmith. Furnished, available 23rd October.



£415 PER WEEK

SUBJECT TO CONTRACT

Barb Mews, W6
Approximate gross internal area
41 sq m / 441 sq ft



First Floor

Floor Plan produced for Finlay Brewer by Mays Floorplans © . Tel 020 3397 4594
Illustration for identification purposes only, not to scale
All measurements are maximum, and include wardrobes and window bays where applicable