



BLYTHE ROAD W14



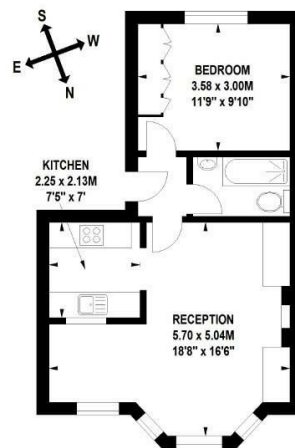


- ONE BEDROOM FLAT • FIRST FLOOR • BRIGHT RECEPTION ROOM • SEPARATE KITCHEN • DOUBLE BEDROOM • WELL PLACED FOR TRANSPORT LINKS AT HAMMERSMITH AND SHEPHERDS BUSH • CLOSE TO WESTFIELD WHITE CITY • COUNCIL TAX BAND C • UNFURNISHED & AVAILABLE SEPTEMBER 30TH • SINGLE OCCUPANTS ONLY

Single occupants only. This bright first floor flat benefits from a double bedroom, a bright reception room with big sash windows and alcove storage, a compact separate kitchen and bathroom. Located on Blythe Road W14, the flat is nearby to Shepherds Bush, Kensington Olympia, Goldhawk Road and Hammersmith Stations. Available from the 30th of September Unfurnished. Council Tax Band C.

Blythe Road, W14

Approximate Gross Internal Area 42 sq m / 452 sq ft



First Floor

Floor Plan produced for Finlay Brewer by Mays Floorplans © . Tel 020 3397 4594
 Illustration for identification purposes only, not to scale
 All measurements are maximum, and include wardrobes and window bays where applicable
 This Floorplan has been prepared in accordance with the current edition of the RICS code of measuring practice.

138 Shepherds Bush Road, London, W6 7PB
 Tel: 020 7371 4071 lettings@finlaybrewer.co.uk