



Bute Gardens W6

Bute Gardens W6

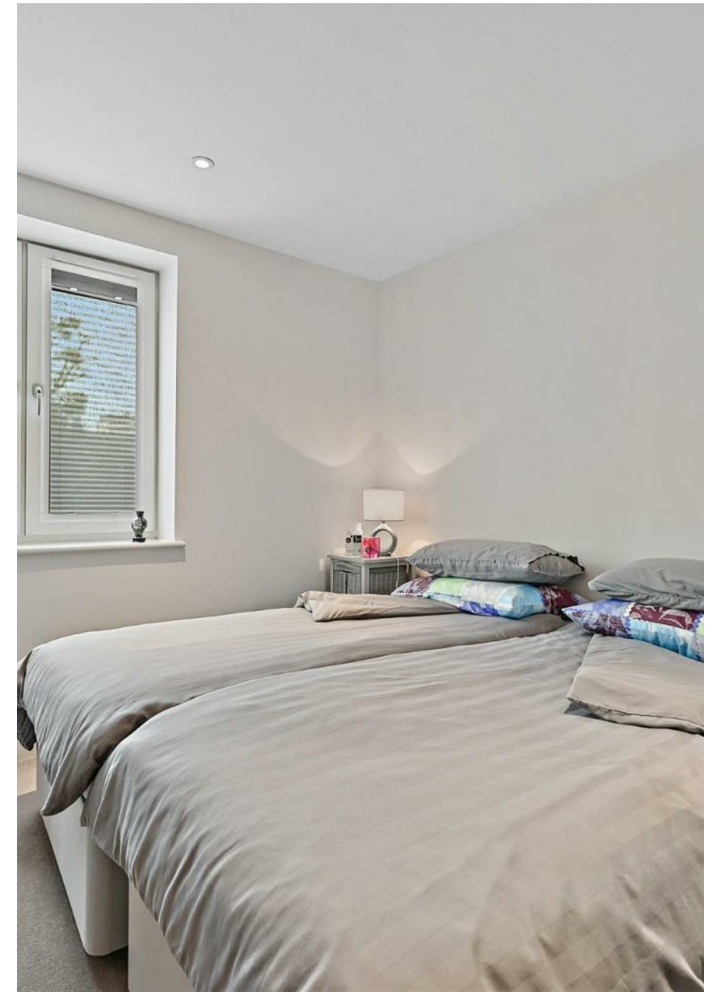
- TWO BEDROOMS (ONE ENSUITE) • 2ND FLOOR • OPEN-PLAN LIVING AREA • TWO BATHROOMS • UTILITY ROOM • UNDERFLOOR HEATING • UNDERGROUND OFF-STREET PARKING • COMMUNAL GARDENS • COUNCIL TAX BAND F • AVAILABLE NOVEMBER 14TH, FURNISHED

Excellent 2 bedroom apartment in a contemporary development to the south of Brook Green, with open plan reception; wood effect tiling; underfloor heating; stylish fitted kitchen with Siemens appliances; modern bathroom; utility room and access to communal garden. Located in a very quiet residential street with underground off-street parking as well as bicycle storage. Within close proximity to the shops on Hammersmith Road and just a few minutes' walk from the transport links at Hammersmith. Available from November 14th, furnished.



£738 PER WEEK

SUBJECT TO CONTRACT





BENTLEY HOUSE, W6



APPROX. GROSS INTERNAL FLOOR AREA: 786 SQ FT/ 73 SQM

PROPERTY PHOTO PLANS.CO.UK
ONE STOP SHOP FOR PROPERTY MARKETING

This plan is for illustrative purposes only and should be used as such by any prospective client. Whilst every attempt has been made to ensure the accuracy of the Floor Plan contained here, measurements of the doors, windows, rooms and any other items are approximate and no responsibility is taken for any errors, omissions, or misstatement. The services, systems and appliances shown have not been tested and no guarantee as to the operability or efficiency can be given.