



**Minford Gardens  
W14**

**finlay  
brewer**

# Minford Gardens W14

**3 BEDROOMS**

**WOODEN FLOORS**

**OPEN PLAN RECEPTION**

**FITTED KITCHEN**

**FAMILY BATHROOM**

**SEPARATE WC**

**ROOF TERRACE**

**CLOSE TO WESTFIELD LONDON AND  
TRANSPORT**

**DUE TO LICENSING, THE PROPERTY IS NOT  
AVAILABLE TO SHARERS**

**UNFURNISHED, AVAILABLE 22ND OCTOBER**

---

Fantastic 3 bedroom maisonette, with wooden floors, open plan reception, stylish fitted kitchen with seating area, family bathroom, separate WC and private roof terrace. Located in a quiet residential street, very close to Westfield London and the transport links at Shepherds Bush. Available 22nd October. Due to licensing, this property is not available to sharers.



---

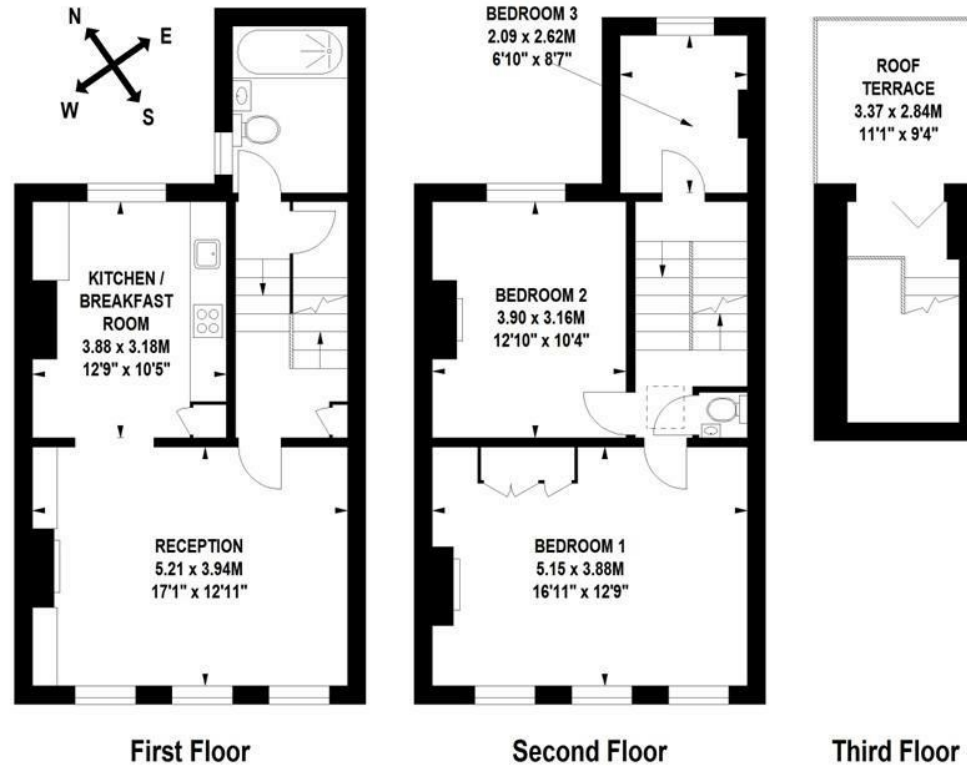
**£600 PER WEEK**

**SUBJECT TO CONTRACT**



## Minford Gardens, W14

Approximate Gross Internal Area 95 sq m / 1023 sq ft



Floor Plan produced for Finlay Brewer by Mays Floorplans © . Tel 020 3397 4594

Illustration for identification purposes only, not to scale

All measurements are maximum, and include wardrobes and window bays where applicable

This Floorplan has been prepared in accordance with the current edition of the RICS code of measuring practice.