



## WESTWICK GARDENS W14

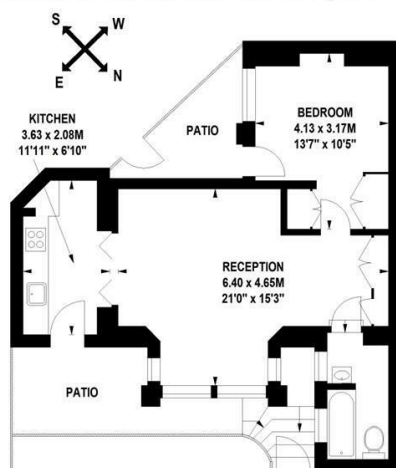




- ONE BEDROOM APARTMENT • SPACIOUS RECEPTION • WOODEN FLOORS • FITTED KITCHEN • CLOSE TO WESTFIELD LONDON • SHEPHERDS BUSH, KENSINGTON OLYMPIA AND HAMMERSMITH STATIONS NEARBY • AVAILABLE IMMEDIATELY • COUNCIL TAX BAND C • UNFURNISHED

Stunning 1 bedroom flat, with wooden floors throughout, spacious reception, stylish fitted kitchen with granite tops, excellent storage and small patio garden. Located in a quiet residential street, close to Westfield London and the transport links at Shepherds Bush. Available immediately, unfurnished.

**Westwick Gardens, W14**  
**Approximate Gross Internal Area 46 sq m / 495 sq ft**



**Lower Ground Floor**

Floor Plan produced for Finlay Brewer by Mays Floorplans © . Tel 020 3397 4594  
 Illustration for identification purposes only, not to scale  
 All measurements are maximum, and include wardrobes and window bays where applicable  
 This Floorplan has been prepared in accordance with the current edition of the RICS code of measuring practice.

138 Shepherds Bush Road, London, W6 7PB  
 Tel: 020 7371 4071 [lettings@finlaybrewer.co.uk](mailto:lettings@finlaybrewer.co.uk)