



**Westwick Gardens
W14**



Westwick Gardens

3 BEDROOMS

RECENTLY REFURBISHED

NEW FITTED KITCHEN

SPACIOUS RECEPTION WITH WOODEN FLOORS

FAMILY BATHROOM

GOOD STORAGE

CLOSE TO SHOPS AND TRANSPORT

UNFURNISHED

AVAILABLE 29TH AUGUST

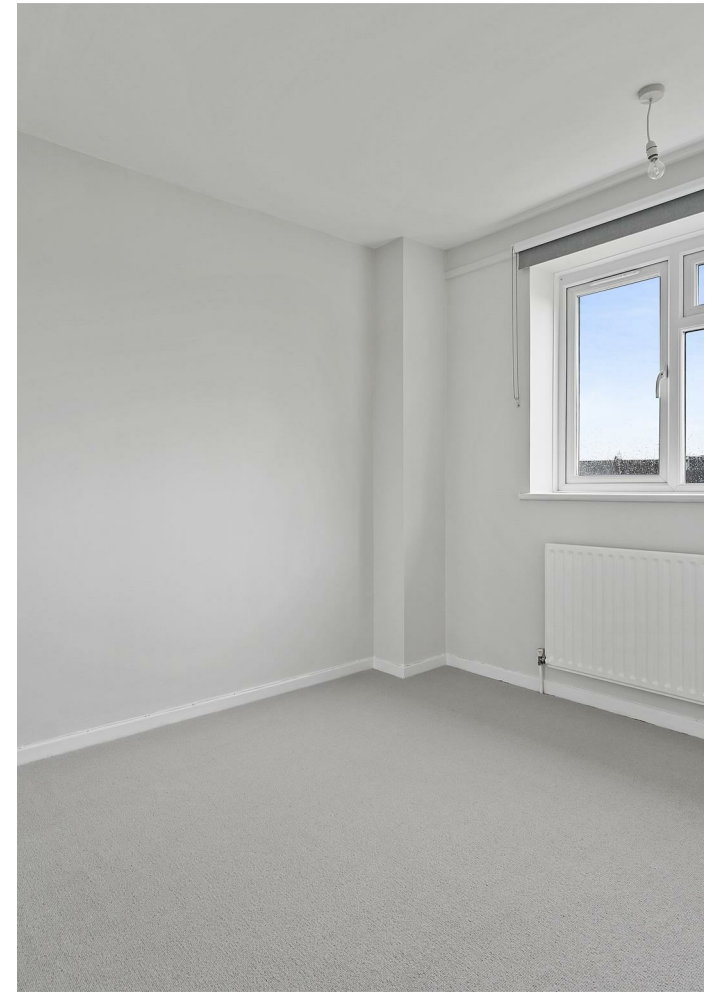


Excellent 3 bedroom flat, recently refurbished with new kitchen, spacious reception with wood flooring, contemporary bathroom, separate WC and good storage. Located in a quiet residential street, close to Westfield London and the transport links at Shepherds Bush and a short walk; from Hammersmith. Unfurnished, available 29th August.



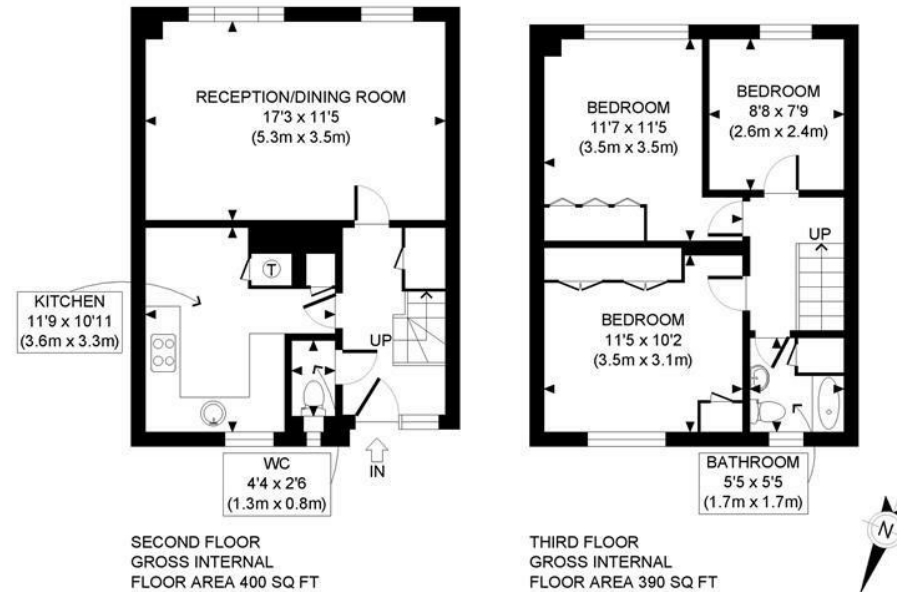
£624 PER WEEK

SUBJECT TO CONTRACT





WESTWICK GARDENS, W14



APPROX. GROSS INTERNAL FLOOR AREA: 790 SQ FT/ 73 SQM

PROPERTY PHOTO PLANS.co.uk
ONE STOP SHOP FOR PROPERTY MARKETING

Whilst every attempt has been made to ensure the accuracy of the floor plan contained here, measurements of the doors, windows, rooms and any other items are approximate and no responsibility is taken for any errors, omissions, or miss-statement. This plan is for illustrative purposes only and should be used as such by any prospective client. The services, systems and appliances shown have not been tested and no guarantee as to the operability or efficiency can be given.