



Ceylon Road W14



Ceylon Road W14

3 DOUBLE BEDROOMS
DOUBLE RECEPTION
FULL WIDTH KITCHEN/BREAKFAST ROOM
BATHROOM
2 SHOWER ROOMS (1 EN SUITE)
PAVED GARDEN
EPC RATING D 66
COUNCIL TAX BAND G

A wonderful flat fronted 3 double bedroom Victorian house with very good living/entertaining space on the ground floor and a walled and paved garden. The generous double reception is open to the stairs and has a feature fireplace, Georgian-style sash window to the front and wood floor and leads naturally into the full width kitchen/breakfast room with sliding doors onto the garden. There are three double bedrooms and three bathrooms on the upper floors including the principal suite which occupies the entire top floor. This cleverly configured house of approximately 1450sq ft has a great feel and generous cubic space throughout.

PRICE GUIDE £1,495,000
FREEHOLD

SUBJECT TO CONTRACT

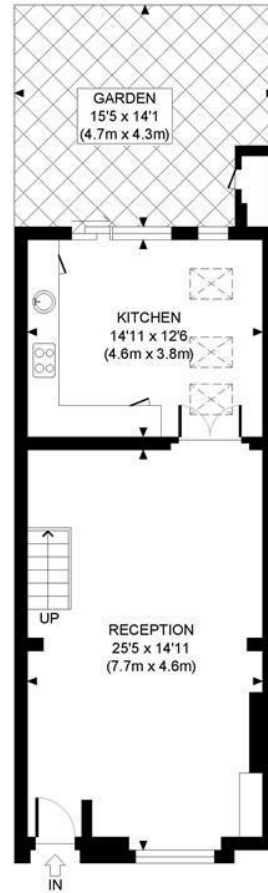




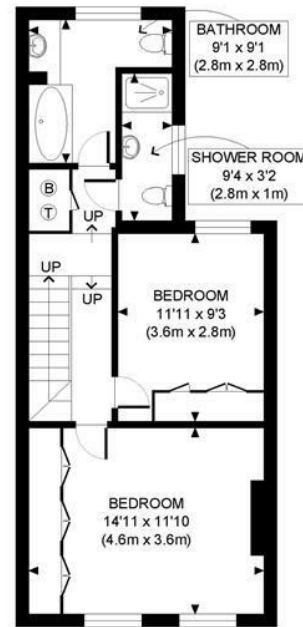




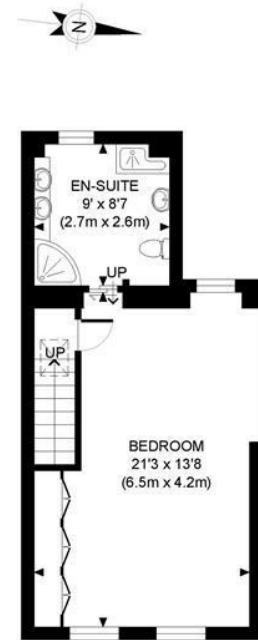
CEYLON ROAD, W14



GROUND FLOOR
GROSS INTERNAL
FLOOR AREA 570 SQ FT



FIRST FLOOR
GROSS INTERNAL
FLOOR AREA 484 SQ FT



SECOND FLOOR
GROSS INTERNAL
FLOOR AREA 389 SQ FT

APPROX. GROSS INTERNAL FLOOR AREA: 1443 SQ FT/ 134 SQM

PROPERTY PHOTO PLANS CO.UK
ONE STOP SHOP FOR PROPERTY MARKETING

This plan is for illustrative purposes only and should be used as such by any prospective client. Whilst every attempt has been made to ensure the accuracy of the Floor Plan contained here, measurements of the doors, windows, rooms and any other items are approximate and no responsibility is taken for any errors, omissions, or misstatement. The services, systems and appliances shown have not been tested and no guarantee as to the operability or efficiency can be given.