



Ellingham Road W12

finlay
brewer

Ellingham Road W12

4 DOUBLE BEDROOMS
DOUBLE RECEPTION
SPACIOUS KITCHEN BREAKFAST ROOM
2 BATHROOMS
PRETTY GARDEN
CLOSE TO RAVENSCOURT PARK
EPC RATING 62
UNFURNISHED
COUNCIL TAX BAND G

A wonderful and big-boned 4 double bedroom 2 bathroom Victorian house with a charming easterly garden. The double reception to the front has a large bay window, 2 impressive cast iron fireplaces and cornicing throughout. The full width kitchen/breakfast room is to the rear and has wood flooring, excellent storage and French doors out to the paved garden. There is also a guest cloakroom. There are 3 generous double bedrooms and family bathroom on the first floor. The principal bedroom suite occupies the 2nd floor and has a contemporary ensuite bathroom and Juliette balcony. This very well configured and bright house of approximately 2113 sq ft also has a very convenient utility room with additional storage on the lower ground floor! Located in a quiet residential street, close to Ravenscourt Park and moments from amenities on Askew Road such as Gail's, The Ginger Pig and The Eagle! Unfurnished. Available 15th August.

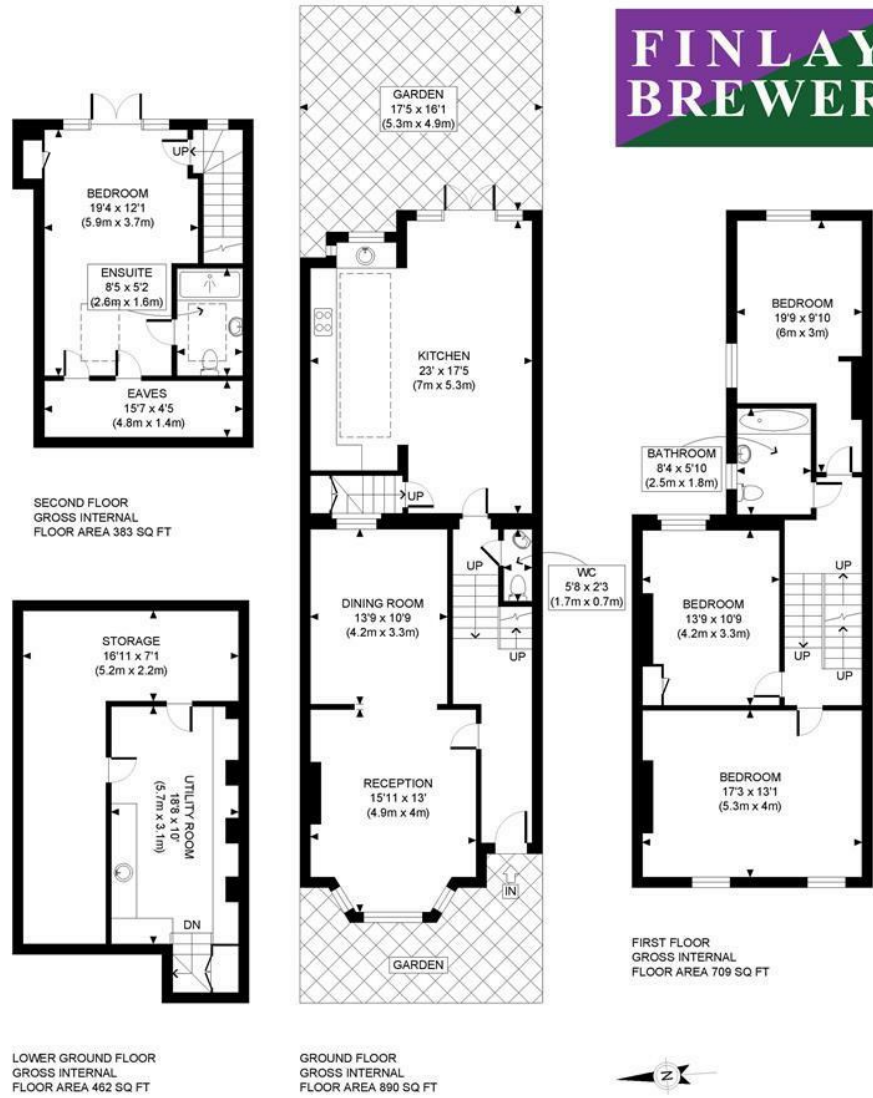
£1,084 PER WEEK

SUBJECT TO CONTRACT









SECOND FLOOR
GROSS INTERNAL
FLOOR AREA 383 SQ FT

LOWER GROUND FLOOR
GROSS INTERNAL
FLOOR AREA 462 SQ FT

GROUND FLOOR
GROSS INTERNAL
FLOOR AREA 890 SQ FT

FIRST FLOOR
GROSS INTERNAL
FLOOR AREA 709 SQ FT

APPROX. GROSS INTERNAL FLOOR AREA WITH OUTHOUSE : 2444 SQ FT/ 227 SQM
APPROX. GROSS INTERNAL FLOOR AREA WITHOUT OUTHOUSE : 2113 SQ FT/ 196 SQM

PROPERTY PHOTO PLANS.co.uk
ONE STOP SHOP FOR PROPERTY MARKETING

Whilst every attempt has been made to ensure the accuracy of the floor plan contained here, measurements of the doors, windows, rooms and any other items are approximate and no responsibility is taken for any errors, omissions, or miss-statement. This plan is for illustrative purposes only and should be used as such by any prospective client. The services, systems and appliances shown have not been tested and no guarantee as to the operability or efficiency can be given.