



BATOUM GARDENS W6



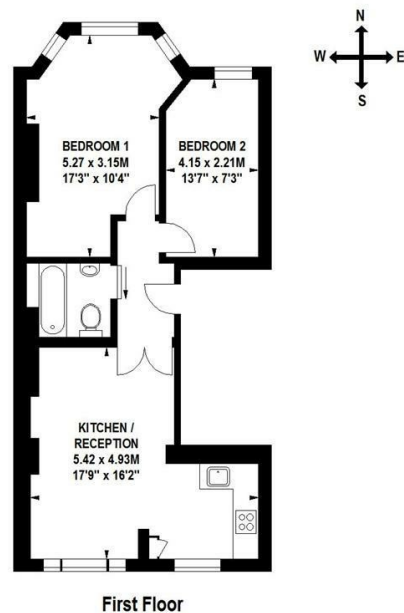


- 2 BEDROOMS • WOODEN FLOORS THROUGHOUT • OPEN PLAN RECEPTION • FITTED KITCHEN • BATHROOM • CLOSE TO TRANSPORT AND SHOPS • LOCATED ON A QUIET RESIDENTIAL STREET • AVAILABLE JUNE 28TH • UNFURNISHED • COUNCIL TAX BAND D

Excellent 2 bedroom apartment, with wooden floors throughout, bright open plan reception, contemporary fitted kitchen and modern bathroom. Located on a quiet residential street, close to the transport links at Shepherds Bush and Hammersmith, and the shops and amenities on Shepherds Bush Road. Available June 28th, unfurnished.

Batoum Gardens, W6

Approximate Gross Internal Area 65 sq m / 700 sq ft



Floor Plan produced for Finlay Brewer by Mays Floorplans © . Tel 020 3397 4594

Illustration for identification purposes only, not to scale

All measurements are maximum, and include wardrobes and window bays where applicable

This Floorplan has been prepared in accordance with the current edition of the RICS code of measuring practice.

138 Shepherds Bush Road, London, W6 7PB
Tel: 020 7371 4071 lettings@finlaybrewer.co.uk