



Faroe Road W14



## Faroe Road W14

- 3 BEDROOM HOUSE • SPLIT LEVEL RECEPTION WITH WOOD FLOORING • KITCHEN BREAKFAST ROOM • 2 BATHROOMS (1 ENSUITE) • PRIVATE GARDEN AND SMALL ROOF TERRACE • GARAGE • CENTRAL BROOK GREEN • CLOSE TO TRANSPORT • UNFURNISHED • AVAILABLE 4TH JULY

Stunning 3 bedroom house with split level reception, wood flooring, kitchen breakfast room, 2 bathrooms (one large ensuite with separate shower), small roof terrace, private garden and garage. Located in the heart of Brook Green, close to the shops and amenities on Blythe Road, and a short walk to Westfield London and the transport links at Hammersmith and Shepherds Bush. Available 4th July, unfurnished.



£1,131 PER WEEK

SUBJECT TO CONTRACT







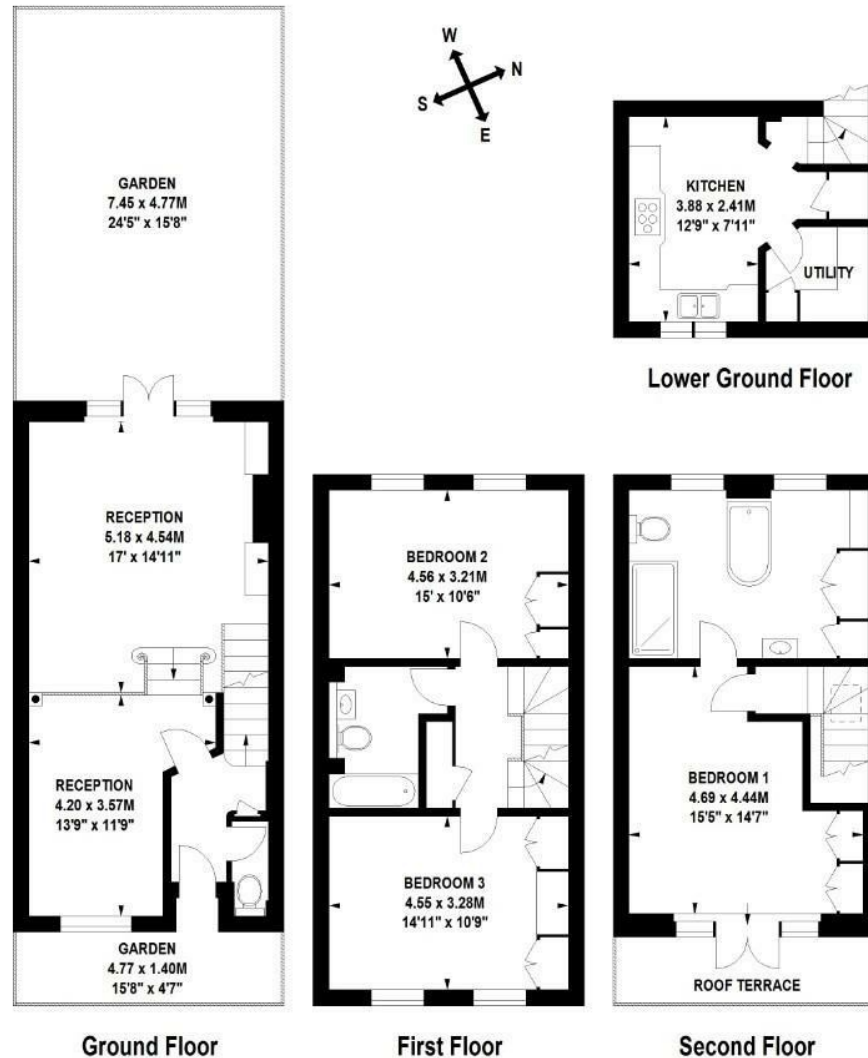






# Faroe Road, W14

Approximate Gross Internal Area 141 sq m / 1518 sq ft



Floor Plan produced for Finlay Brewer by Mays Floorplans © . Tel 020 3397 4594

Illustration for identification purposes only, not to scale

All measurements are maximum, and include wardrobes and window bays where applicable

This Floorplan has been prepared in accordance with the current edition of the RICS code of measuring practice.