



LIME GROVE W12



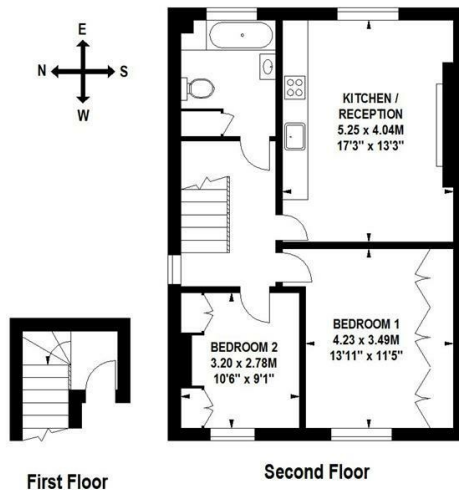


- 2 BEDROOMS • WOODEN FLOORS • OPEN PLAN RECEPTION • STYLISH FITTED KITCHEN • CONTEMPORARY BATHROOM • GARDEN • QUIET LOCATION CLOSE TO TRANSPORT • CLOSE TO WHITE CITY HOUSE AND WESTFIELD LONDON • PART FURNISHED • AVAILABLE NOW

Stunning 2 bedroom apartment, with wooden floors, open plan reception with stylish fitted kitchen, great bedroom storage, contemporary bathroom and shared garden. Located in a quiet residential road, a short walk from White City House, Westfield London and the transport links at Shepherds Bush and Goldhawk Road. Available now, part-furnished.

Lime Grove, W12

Approximate Gross Internal Area 66 sq m / 710 sq ft



Floor Plan produced for Finlay Brewer by Mays Floorplans © . Tel 020 3397 4594

Illustration for identification purposes only, not to scale

All measurements are maximum, and include wardrobes and window bays where applicable

This Floorplan has been prepared in accordance with the current edition of the RICS code of measuring practice.

138 Shepherds Bush Road, London, W6 7PB
Tel: 020 7371 4071 lettings@finlaybrewer.co.uk