



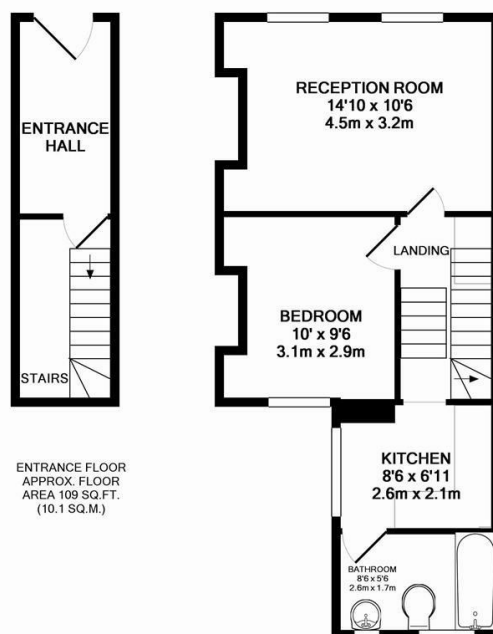
CARDROSS STREET W6





• 1 BEDROOM • BRIGHT RECEPTION • SEPARATE FITTED KITCHEN • BATHROOM • BRACKENBURY VILLAGE • CLOSE TO SHOPS AND TRANSPORT • AVAILABLE JUNE 7TH • UNFURNISHED • APPLICABLE FOR 1 PARKING PERMIT

Charming 1 bedroom flat on the first floor of a converted cottage, with bright reception, separate fitted kitchen and bathroom. Located on a quiet residential street in the heart of Brackenburg Village, close to Ravenscourt Park, the shops and amenities on King Street and the transport links at Hammersmith. Available June 7th, unfurnished.



1ST FLOOR
APPROX. FLOOR
AREA 394 SQ. FT.
(36.6 SQ. M.)

1ST FLOOR FLAT, 15 CARDROSS STREET, LONDON W6 0DP
TOTAL APPROX. FLOOR AREA 503 SQ. FT. (46.8 SQ. M.)

Whilst every attempt has been made to ensure the accuracy of the floor plan contained here, measurements of doors, windows, rooms and any other items are approximate and no responsibility is taken for any error, omission, or mis-statement. This plan is for illustrative purposes only and should be used as such by any prospective purchaser. The services, systems and appliances shown have not been tested and no guarantee as to their operability or efficiency can be given
Made with Metropix ©2010

138 Shepherds Bush Road, London, W6 7PB
Tel: 020 7371 4071 lettings@finlaybrewer.co.uk