



Milson Road

, Brook Green, W14 0LA

£2,100 Per Week

A striking and contemporary 4/5 bedroom end of terrace house with 2 floors of living/entertaining space and a London-lawned walled garden. The dual aspect reception has floor to ceiling feature window, a herringbone wood floor and exposed brick walls and opens onto the garden. The lower ground floor has a full width kitchen/breakfast room with a glass wall to one side which has steps going up to the garden. The impressive custom built kitchen has a polished concrete floor and exposed brick walls. There is also a spectacular study/bedroom 5 with en suite shower room on this floor. There are 4 additional double bedrooms on the upper floors including the principal bedroom suite on the second floor. This modern townhouse has exquisite grey Roman-format brick, render and Portland stone facade which make it stand out whilst blending with the adjacent Victorian properties. This meticulously configured and designed property has a great sense of space and is flooded with light throughout. Available now, furnished.

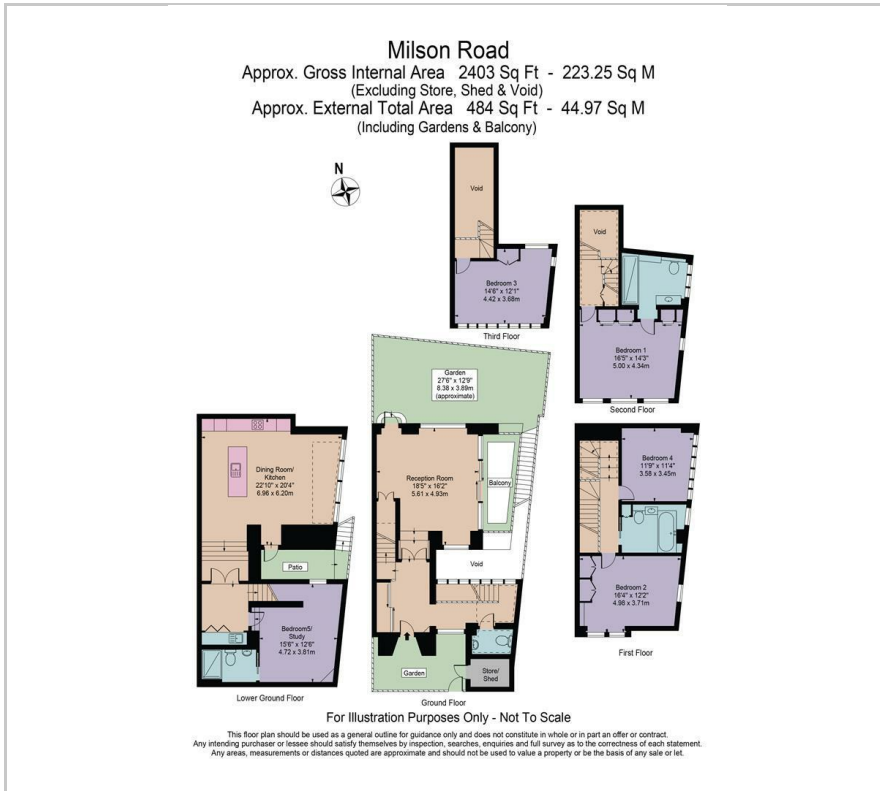
- 4/5 DOUBLE BEDROOMS
- RECEPTION
- KITCHEN/DINING ROOM
- 2 BATHROOMS (1 EN SUITE)
- SHOWER ROOM
- UTILITY ROOM & STORAGE
- GUEST CLOAKROOM
- WALLED GARDEN
- AVAILABLE NOW
- COUNCIL TAX BAND H

Viewing

Please contact our Finlay Brewer - Sales Office on 020 7371 4171 if you wish to arrange a viewing appointment for this property or require further information.



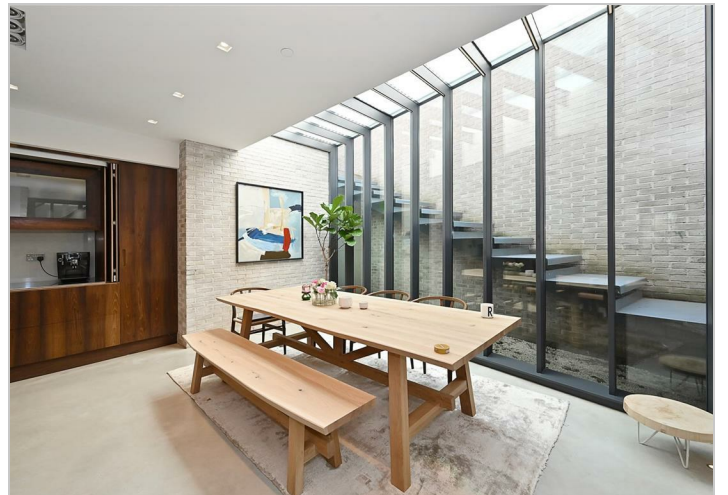
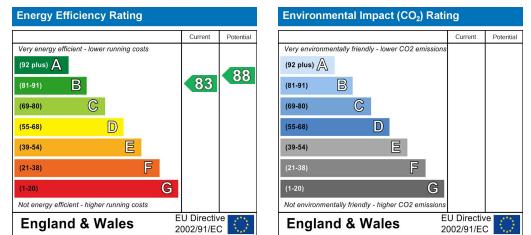
Floor Plan



Area Map



Energy Efficiency Graph



These particulars, whilst believed to be accurate are set out as a general outline only for guidance and do not constitute any part of an offer or contract. Intending purchasers should not rely on them as statements of representation of fact, but must satisfy themselves by inspection or otherwise as to their accuracy. No person in this firm's employment has the authority to make or give any representation or warranty in respect of the property.