



Queens Mansions W6



Queens Mansions W6

- 2 Double Bedrooms
- En Suite Bathroom
- Open Plan Kitchen/Reception
 - Family Bathroom
 - EPC Rating D 66
 - Council Tax Band F
- Lease Length: 106yrs APX
- Service Charge: £2,618 pa

A very spacious and bright 2 double bedroom flat situated on the 4th floor of a handsome Victorian purpose-built mansion block. The generous reception has a wonderful triple arch feature window, a feature fireplace and parquet flooring and is flooded with light. The kitchen is located off the reception and has white marble countertops with integrated appliances as well as a useful skylight. The principal bedroom provides generous built in storage, a sash window and a fully tiled ensuite shower room with 2 small sash windows. The second double bedroom is located at the end of the hallway and has a sash window. There is a contemporary family bathroom beside the second bedroom. This property is in excellent condition and could be moved into without further expense. It is ideally located in very close proximity to Brook Green, the amenities of Shepherds Bush Road and the transport hub at Hammersmith Broadway.



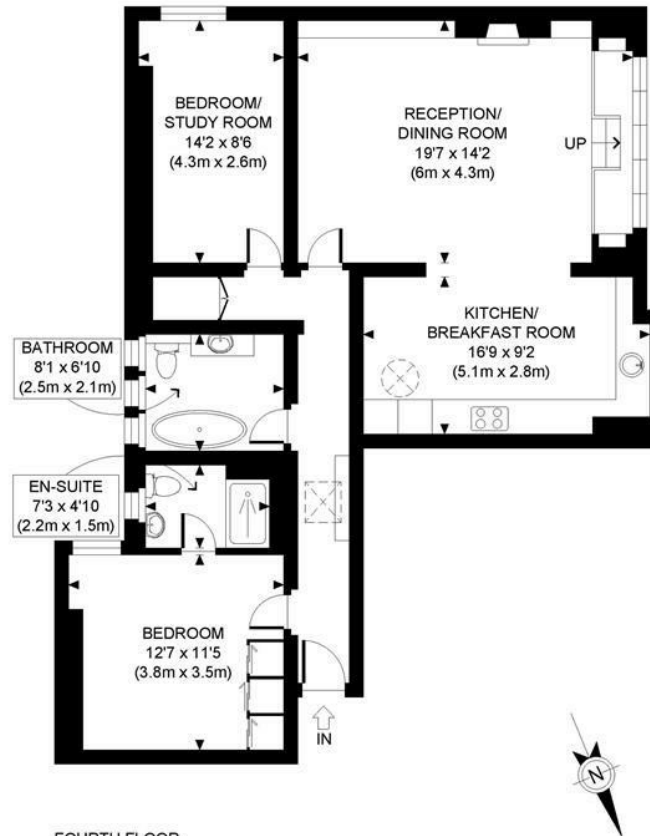
PRICE GUIDE £1,075,000
LEASEHOLD - SHARE OF FREEHOLD
SUBJECT TO CONTRACT







QUEENS MANSIONS, W6



FOURTH FLOOR
GROSS INTERNAL
FLOOR AREA 965 SQ FT

APPROX. GROSS INTERNAL FLOOR AREA: 965 SQ FT/ 90 SQM

PROPERTY PHOTO PLANS.CO.UK
ONE STOP SHOP FOR PROPERTY MARKETING

This plan is for illustrative purposes only and should be used as such by any prospective client. Whilst every attempt has been made to ensure the accuracy of the Floor Plan contained here, measurements of the doors, windows, rooms and any other items are approximate and no responsibility is taken for any errors, omissions, or misstatement. The services, systems and appliances shown have not been tested and no guarantee as to the operability or efficiency can be given.